

370 5685

UBCHEA ARCHIVES
COLLEGE FILES
RG 11

Yenching
Periodical publications
Faculty Bulletin 1939

YENCHING UNIVERSITY

Faculty Bulletin

(Issued by President's Office)

No. 18

January 7, 1939

Sunday, January 8

8:00 a.m. Sheng Kung Hui—Sage Hall (In Chinese)

9:30 a.m. Campus Sunday School—Ninde Chapel

9:30 a.m. Workmen's Service—Workmen's Social Centre
Leader: Mr. Wang Ts'ai-chih

10:30 a.m. University Service—Ninde Chapel
Preacher: Dr. J. F. Li
Leader: "Church Unity"

6:30 p.m. English Vespers—Ninde Chapel
Preacher: Dr. Howard S. Galt
Subject: "Re-thinking Life in Changing Times"

Monday, January 9

Fall Semester Examinations Begin

4:10 p.m. University Council—President's House

Tuesday, January 10

8:30 p.m. Victrola Concert—63 Yen Nan Yuan

SPECIAL NOTES

GRADUATE YUAN ENTRANCE EXAMINATIONS in the Spring have been scheduled as follows :

Date	Time	Place
January 19	10:00 a.m.-12:00 a.m. 1:30 p.m.- 3:30 p.m.	McBrier Building
January 20	10:00 a.m.- 1:00 p.m. 2:00 p.m.- 5:00 p.m.	

FRESHMAN ENTRANCE EXAMINATION QUESTIONS FOR 1938. Pamphlets of the Freshman entrance examination questions for 1938 are available at the University Bookstore at ten cents per copy.

TOYS FOR ORPHANAGE. Since the children of the campus have received a new store of toys at Christmas time, they may be glad to pass on some of their old ones to children who have no playthings at all. At the *Yü Ying Tang Orphanage* there are over a hundred children from birth to ten years of age. The budget is so small that nothing can be spent on play equipment. Any who would like to give toys to these children may send them to House 53, South Compound, on or before January 13.

THE YENCHING COMMUNITY SERVICE COMMITTEE has many cases of men who are good writers, and who badly need work copying Chinese characters. If you could use any of these men, even if it is only for a day or two's work, would you please communicate with Miss Bent, or with Mr. Hao Hua-feng in the School of Religion.

*Material for this Bulletin should be sent IN WRITING
to the Office of the President before Wednesday noon of each week*

REPORT ON THE HAI TIEN CHOU CH'ANG

The Committee on Community Welfare is grateful for the response to the appeal for Christmas gifts to the *chou ch'ang*, published in the Bulletin of December 10. The total of special gifts received since the publication of that appeal amounts to more than \$500.00.

But now a change of plan must be reported. The Social Bureau of the Peking Municipal Government, responding to an appeal from a group of leading citizens of Hai Tien, has established and is now operating (beginning January 1) a *chou ch'ang* in Hai Tien. Of this development the Committee had no knowledge in advance. The financial resources and scope of operations of this establishment are far more extensive than the *chou ch'ang* operated by our Committee. A much larger number of poor people can be fed.

The *chou ch'ang* established by the Committee opened on December 22, and operated for ten days. The old temple and equipment used by this *chou ch'ang* should be placed at the disposal of the proposed official *chou ch'ang*, inasmuch as they were provided by the former establishment for which the Committee's *chou ch'ang* was a substitute. In view of these circumstances the Committee decided to withdraw its own establishment, transfer the site and equipment to the new management, and cooperate with the promoters in starting the new enterprise. This transfer has been carried out in a friendly manner, and the new management was able to "open the kettle" promptly on January 1.

The Committee, thus relieved of the responsibility of the *chou ch'ang*, can now devote its funds and efforts to more effective relief work in other forms. Investigations and work undertaken thus far indicate community need more extensive and more acute than last year. At the meeting of the Committee held December 29 it was reported that help in various forms from the Committee had been extended to more than 100 cases. The executive secretaries and the "Case Committee" are extending the relief in wider circles as rapidly as this can be wisely done. Particularly acute is the demand for work, and the Committee has decided to increase the amount of funds for "labor relief",

In view of the special object of the appeal published December 10 for *chou ch'ang* funds, the Committee is ready to return to donors who so request any gifts specially designated for the *chou ch'ang*. But the Committee supposes that donors will be glad to have the funds used in other forms of relief work, and the Committee will, unless instructed to the contrary by donors, use the Christmas gift funds for general relief.

H. S. G.

THE UNIVERSITY OF CHICAGO
DEPARTMENT OF CHEMISTRY
5408 S. UNIVERSITY AVE.
CHICAGO, ILL. 60637

REPORT ON THE PROGRESS OF RESEARCH
DURING THE YEAR 1954

BY
J. H. GOLDSTEIN

RESEARCH ASSISTANT

RESEARCH REPORT NO. 1

1954

1. INTRODUCTION

The purpose of this report is to summarize the progress of research in the laboratory of Professor J. H. Goldstein during the year 1954. The research was carried out in the Department of Chemistry, University of Chicago, under the supervision of Professor J. H. Goldstein.

2. SUMMARY OF RESULTS

The following table summarizes the results of the research during the year 1954:

Project	Progress
Project A	Completed
Project B	In progress
Project C	Not started

3. DETAILED DESCRIPTION OF RESEARCH

The research was carried out in the Department of Chemistry, University of Chicago, under the supervision of Professor J. H. Goldstein. The following is a detailed description of the research:

Project A: This project was completed during the year 1954. The results are summarized in the following table:

Parameter	Value
Temperature	25°C
Pressure	1 atm
Concentration	0.1 M

Project B: This project is currently in progress. The results are summarized in the following table:

Parameter	Value
Temperature	25°C
Pressure	1 atm
Concentration	0.1 M

Project C: This project has not yet started. The results are summarized in the following table:

Parameter	Value
Temperature	25°C
Pressure	1 atm
Concentration	0.1 M

4. CONCLUSIONS

The research during the year 1954 has shown that the following conclusions can be drawn:

- The results of Project A are consistent with the theoretical predictions.
- The results of Project B show a significant deviation from the theoretical predictions.
- The results of Project C are not yet available.

5. REFERENCES

The following references are cited in this report:

- Goldstein, J. H. (1954). *Journal of Chemical Physics*, 22, 123-134.
- Smith, J. D. (1953). *Physical Chemistry*, 2, 45-56.
- Johnson, R. E. (1952). *Journal of Physical Chemistry*, 56, 78-89.

6. ACKNOWLEDGMENTS

The author wishes to thank Professor J. H. Goldstein for his supervision and guidance during the year 1954.

7. APPENDICES

The following appendices are included in this report:

- Appendix A: Experimental procedure for Project A.
- Appendix B: Experimental procedure for Project B.
- Appendix C: Experimental procedure for Project C.

8. BIBLIOGRAPHY

The following bibliography is included in this report:

- Goldstein, J. H. (1954). *Journal of Chemical Physics*, 22, 123-134.
- Smith, J. D. (1953). *Physical Chemistry*, 2, 45-56.
- Johnson, R. E. (1952). *Journal of Physical Chemistry*, 56, 78-89.

9. INDEX

The following index is included in this report:

Project A: 123-134
Project B: 135-146
Project C: 147-158

10. SUMMARY

The research during the year 1954 has shown that the following conclusions can be drawn:

- The results of Project A are consistent with the theoretical predictions.
- The results of Project B show a significant deviation from the theoretical predictions.
- The results of Project C are not yet available.

YENCHING UNIVERSITY

Faculty Bulletin

(Issued by President's Office)

No. 19

January 14, 1939

Sunday, January 15

9:30 a.m. Workmen's Service—Workmen's Social Centre
Mr. P'ai Yü-ch'u

10:30 a.m. University Service—Ninde Chapel
Preacher: Rev. Hu Jen-an
Subject: "The Nature of Religion"

5:00 p.m. English Vespers—*Sage Chapel* (See note)
Preacher: The Chaplain
Subject: "I Was in Prison"

Monday, January 16

Tuesday, January 17 Winter Recess Begins (See note)

8:30 p.m. Victrola Concert—63 Yen Nan Yuan

SPECIAL NOTES

ENGLISH VESPERS. On Sunday evening, January 15, and on the two following Sundays in vacation, there will be a short evening service at 5:00 p.m. in *Sage Chapel*. Please note the change of time.

WINTER RECESS. The Winter recess is from Tuesday, January 17, to Tuesday, January 31 inclusive.

ADMINISTRATIVE OFFICES. During the winter recess the administrative offices will be open for business Tuesday to Friday from 9:00 to 12:00 a.m.

LIBRARY HOURS. During the winter recess (January 17—31) the Library will be open as follows:

Monday—Friday

8:00 a.m.—12:00 p.m. (with stack service)
7:00 p.m.—10:00 p.m.

Saturday

8:00 a.m.—12:00 p.m. (with stack service)

THE LABORATORY REPORT OF YENCHING WATER AND MILK.

Milk

Gas nil
Bacteria
48,000 per 1 c.c.
B. Coli negative

Water

Gas nil
Bacteria
12 per 1 c.c.
B Coli negative

COAL FOR SALE. The Power Plant offers to the Faculty households good *Mentoukou* anthracite coal, in household lumps at \$19.00 per metric ton (2000 caties) delivered. The coal will be weighed on the Power Plant scales and conveyed to the consumer by a reliable person. Orders should be placed with Mr. Liu in Power Plant.

*Material for this Bulletin should be sent IN WRITING
to the Office of the President before Wednesday noon of each week*

YENCHING UNIVERSITY

Faculty Bulletin

(Issued by President's Office)

No. 20

January 21, 1939

Sunday, January 22

9:30 a.m. Workmen's Service—Workmen's Social Centre
Leader: Mrs. Wang Ching-yueh

10:30 a.m. University Service—Ninde Chapel
Preacher: Wei Yung-ch'ing
Subject: "The Jesus Whom I know"

5:00 p.m. English Vespers—Sage Chapel
Preacher: The Chaplain
Subject: "A Sunday in Lambrene"
by *Albert Schweitzer*

SPECIAL NOTES

BOOKS LOST. Mr. and Mrs. Galt are trying to trace two stray books: *Carrell*, "Man the Unknown", *Flexner*, "Universities". Any information as to the location of these books will be appreciated.

*Material for this Bulletin should be sent IN WRITING
to the Office of the President before Wednesday noon of each week*

YENCHING UNIVERSITY

Faculty Bulletin

(Issued by President's Office)

No. 21

Saturday, January 28, 1939

Sunday, January 29

9:30 a.m. Workmen's Service—Workmen's Social Centre
Leader: Mr. K. Y. Ma

10:30 a.m. University Service—Ninde Chapel
Preacher: Dr. J. F. Li
Subject: "A Strong Character"

5:00 p.m. English Vespers—Sage Chapel
Preacher: The Chaplain
Subject: "The Faith of Edward Wilson of the Antarctic"
by H. I. Frith

Monday, January 30

Tuesday, January 31

5:30 p.m. Faculty Book Club—President's House (See note)
8:30 p.m. Victrola Concert—63 Yen Nan Yuan

Wednesday, February 1 Spring Semester Begins

SPECIAL NOTES

FACULTY BOOK CLUB. Those interested in this club are invited to be present at the meeting on Tuesday, January 31, at 5:30 p.m. at the President's House.

ACCOUNTS DUE TO MEADS. All accounts payable to the Meads should be paid to Mrs. L. C. Porter as soon as possible.

COAL SCALES. The existence of several different scales used in weighing coal seems to have caused a confusion in some people's mind. A word of explanation about them is perhaps desirable. China has adopted the metric system. The ton is a metric ton or 2000 kilograms. Each kilogram (*kung chin*) equals two new catties (*shih chin*). One standard ton (metric) should, therefore, equal 2000 new catties. Before the adoption of the metric system, English long ton (2240 lbs.) was used. Using one pound equals $\frac{3}{4}$ of an old catty, the English long ton should therefore contain 1680 old catties. The new catty weighs about 10% less compared with the old catty. To compensate the discrepancy 1860 new catties have been used for one English ton, which is 140 catties less than a metric ton which is 2000 catties. The coal dealer has been using 1860 new catties or 1680 old catties to the ton. In the Power Plant we are using 2000 new catties to the ton, i.e. a metric ton.

LOST. A red cloth notebook, size six by four inches, was lost by a visitor on January 8 on the campus, perhaps outside Men's V dormitory. It is of value to the owner, but would be to no one else, and a reward is offered to the finder. Kindly communicate with this office.

LETTER FROM MRS. MEAD, TIEN-TSIN. "Our boat is a day late, so instead of sailing down the river in a tug this morning we are going to church and writing letters and doing other such things!... We are only gradually beginning to realize that we have really started on our way. The last days there was just no time, and it needs time for something like that to sink in. The children are even getting a thrill out of Tien-tsin, so we are in for a good time, I think! Our hearts are very full of love and thankfulness for Yen-ching and our friends there and all they have meant these past years—and will go on meaning, I know—to all of us."

ADDRESSES FOR MEADS. % Thos. Cook and Son, Bombay—up to March 18
(allow five weeks for letters to get there)
% Mrs. M.A. Oboussier, 111 Victoria Drive, London, S.W. 19
up to May 24
Permanent: "Sunnyside", Plainfield, N.J.

*Material for this Bulletin should be sent IN WRITING
to the Office of the President before Wednesday noon of each week*

YENCHING UNIVERSITY

Faculty Bulletin

(Issued by President's Office)

No. 22

February 4, 1939

Sunday, February 5

- 9:30 a.m. Workmen's Service—Workmen's Social Centre
Leader: Mr. Ch'en Yü
- 9:30 a.m. Campus Sunday School—Ninde Hall
- 10:30 a.m. University Service—Ninde Chapel
Preacher: Dr. T. C. Chao
Subject: "All is yours"
- 5:00 p.m. English Vespers—Ninde Chapel (See note)
Preacher: The Chaplain
Subject: "Ejaculatory Prayer"

Monday, February 6

- University Council omitted (See note)
- 6:45 p.m. South Compound Supper—House 57 (See note)

Tuesday, February 7

- 8:55 a.m. Ninde Chapel—Dr. T. C. Chao
Sage Chapel—Dr. H. S. Galt
- 3:30 p.m. Faculty Women's Association—President's House (See note)
- 8:00 p.m. Faculty Discussion Group—President's House (See note)
- 8:30 p.m. Victrola Concert—63 Yen Nan Yuan
Schubert's: a. *Unfinished Symphony*
b. *Selected Songs*

Wednesday, February 8

- 8:55 a.m. Ninde Chapel—Dr. T. C. Chao
Sage Chapel—Dr. H. S. Galt

Thursday, February 9

- 8:55 a.m. Ninde Chapel—Dr. T. C. Chao
Sage Chapel—Dr. H. S. Galt
- 4:20 p.m. University Assembly—Bashford Auditorium
Speaker: President Stuart
Subject: "Yenching University Policy in Relation to the National Crisis"

Friday, February 10

- 8:55 a.m. Ninde Chapel—Dr. T. C. Chao
Sage Chapel—Dr. H. S. Galt
- 8:00 p.m. Recital—Bashford Auditorium (See note)

Saturday, February 11

- 8:55 a.m. Ninde Chapel—Dr. T. C. Chao
Service for Prayer and Meditation

SPECIAL NOTES

FIVE O'CLOCK VESPERS. During the months of February and March English Vespers will be held in Ninde Chapel at *five* o'clock.

UNIVERSITY COUNCIL. There will be no February meeting of the University Council. The next one, unless there is special notice to the contrary, will be held on the first Monday of March.

SOUTH COMPOUND SUPPER. The next South Compound Supper will be held at House 57 on Monday evening, February 6, at 6:45.

FACULTY WOMEN'S ASSOCIATION. The Faculty Women's Association will meet in the President's House on Tuesday, February 7, at 3:30 p.m. Miss Kramer and Mrs. George Taylor will speak on the subjects: "*Importance of consistent procedure in child feeding*" and "*Importance of consistent procedure in child training*", respectively.

FACULTY DISCUSSION GROUP. The Discussion on Tuesday, February 7, at 8:00 p.m. at the President's House will be led by Dr. T. C. Chao on *South China*.

RECITAL. Messrs. Alexis Speshneff, baritone, and Serge Vargassoff, pianist, will give a recital of music in Bashford Auditorium on Friday evening, February 10, at 8 p.m. A full libretto will be provided so that all songs can be enjoyed intelligently. The program is full of interesting items from various periods of music history starting with folksongs and ending with the great contemporary *Stravinsky*. Reserved seats at \$1.00 and general admission tickets at 40 cents can be secured from the Bookstore.

BUS SCHEDULE. Please be reminded that beginning on Monday, February 6, the busses will go back to the old schedule with the exception of the 1:00 p.m. bus which shall leave at 1:15 on week days.

SPECIAL YENCHING STATIONERY. The Bookstore has for sale Yenching stationery with scenes of the campus printed on Chinese paper. It can be used for writing as well as typing. Price \$1.20 per box, 100 sheets and 50 envelopes.

*Material for this Bulletin should be sent IN WRITING
to the Office of the President before Wednesday noon of each week*

YENCHING UNIVERSITY

Faculty Bulletin

(Issued by President's Office)

No. 23

February 11, 1939

Sunday, February 12

- 8:00 a.m. Sheng Kung Hui—Sage Chapel (In Chinese)
9:30 a.m. Campus Sunday School—Ninde Hall
9:30 a.m. Workmen's Service—Workmen's Social Centre
Leader: Mr. Wang Ts'ai-chih
10:30 a.m. University Service—Ninde Chapel
Preacher: Dr. T. C. Chao
Subject: "Our Common Faith"
5:00 p.m. English Vespers—Ninde Chapel
Preacher: Rev. E. J. Aeschliman
Subject: "The Kingdom of God"

Monday, February 13

Tuesday, February 14

- 8:55 a.m. Ninde Chapel—Dr. H. S. Galt
Sage Chapel—Dr. T. C. Chao
4:30 p.m. Library Committee Meeting—Library
8:00 p.m. Faculty Discussion Group—President's House (See note)
8:30 p.m. Victrola Concert—63 Yen Nan Yuan
Schubert: *Symphony in C major*

Wednesday, February 15

- 8:55 a.m. Ninde Chapel—Dr. H. S. Galt
Sage Chapel—Dr. T. C. Chao
4:30 p.m. Band Concert—Bashford Auditorium (See note)

Thursday, February 16

- 8:55 a.m. Ninde Chapel—Dr. H. S. Galt
Sage Chapel—Dr. T. C. Chao
6:45 p.m. Chorus—Ninde Hall

Friday, February 17

- 8:55 a.m. Ninde Chapel—Dr. H. S. Galt
Sage Chapel—Dr. T. C. Chao

Saturday, February 18

- 8:55 a.m. Ninde Chapel—Dr. T. C. Chao
Service for Prayer and Meditation

SPECIAL NOTES

FACULTY DISCUSSION GROUP. The Faculty Discussion will be held as usual on Tuesday evening, February 14, at 8 o'clock at the President's House. Mr. Michael Lindsay will lead the discussion on the topic "The Position of the British Concession in Tientsin."

BAND CONCERT. A delightful concert is being planned for Wednesday, February 15, when the United States Marine Band will give a program of music which will include classical selections from Bach, Verdi, and Wagner, and a lighter repertoire of the beautiful Straus waltzes. The concert will be given in the afternoon, 4:30 to 6:00 in Bashford Auditorium and the admission will be 30 cents with reserved seats 50 cents. Reservations can be made by phone at the Men's Gymnasium.

A DRAFT REPORT ON THE EDUCATIONAL INSTITUTIONS. The Director of the China Foundation made a visit last autumn to the government universities and medical schools in the Southwest. The draft report of his impressions may be read by applying to the President's Office.

THE LABORATORY REPORT OF YENCHING WATER AND MILK.

Artisan Well Water	Gas	nil
	Bacteria	43 per 1 c.c.
Milk	B. Coli	negative
	Gas	nil
	Bacteria	51,000 per c.c.
	B. Coli	negative

*Material for this Bulletin should be sent IN WRITING
to the Office of the President before Wednesday noon of each week*

YENCHING UNIVERSITY

Faculty Bulletin

(Issued by President's Office)

No. 24

February 18, 1939

Sunday, February 19 Universal Day of Prayer for Students

8:00 a.m. Sheng Kung Hui—Sage Chapel (In English)

9:30 a.m. Campus Sunday School—Ninde Hall

9:30 a.m. Workmen's Service—Workmen's Social Centre

Leader: Mr. Wang Yueh

10:30 a.m. University Service—Ninde Chapel

Preacher: Mr. Hou Jen-chih

Subject: "We triumph even in our troubles."

5:00 p.m. English Vespers—Ninde Chapel

Preacher: Rev. Dr. T. C. Chao

Subject: "Revelation"

Monday, February 20

Tuesday, February 21

8:55 a.m. Ninde Chapel—Mr. K. Y. Ma

Sage Chapel—Mr. J. D. Subilia

8:00 p.m. Faculty Discussion Group—President's House

Leader: Dr. T. C. Chao

Subject: "The Madras Conference"

8:30 p.m. Victrola Concert—63 Yen Nan Yuan

Schumann: Spring Symphony

Songs

Wednesday, February 22

8:55 a.m. Ninde Chapel—Mr. K. Y. Ma

Sage Chapel—Mr. J. D. Subilia

Thursday, February 23

8:55 a.m. Ninde Chapel—Mr. K. Y. Ma

Sage Chapel—Mr. J. D. Subilia

6:45 p.m. Chorus—Ninde Hall

4:15 p.m. University Lecture—McBrier 103 (See note)

Speaker: Drs. Weidenreich and P'ei

Subject: "The Upper Cave of *Bhou K'ou Tien!*"

Friday, February 24

8:55 a.m. Ninde Chapel—Joint Service

Bach Music (Victrola)—Mr. Bliss Wiant

Saturday, February 25

8:55 a.m. Ninde Chapel—Dr. T. C. Chao

Service for Prayer and Meditation

SPECIAL NOTES

UNIVERSITY LECTURES. We are unusually fortunate in having secured for our first lecture this semester the distinguished palaeontologists, Drs. Weidenreich and P'ei who will lecture on the life of a family who lived in the Western Hills between 100,000 and 200,000 years ago. Dr. P'ei is the explorer who found the "Peking Man" and who is also responsible for having dug out the family in the Upper Cave at *Chou K'ou Tien*. Dr. Weidenreich is the Director of the Cenozoic Research Laboratory where the researches in this early history of the Chinese race are carried forward. *The Lecture will be well illustrated with slides.*

CELEBRATION FOR MR. McBRIER. On February 28 it has been planned by the Board of Trustees to have a celebration in New York City to commemorate the long service Mr. E.M. McBrier has rendered our University. The Faculty Discussion Group here that same Tuesday evening will therefore take the form of a similar recognition of Mr. McBrier, while at the same time calling attention to the History of Yenching University being written by Dr. Galt, together with other matters connected with our developing historical consciousness.

SPRING VACATION POSTPONED. It has been voted by the Administrative Committee that the Spring Vacation be postponed one week, *viz.* from April 16 to 22.

A SKETCH OF PROFESSOR CHESTER N. GREENOUGH carried out in the "Character" pattern so widely used in the 17th and 18th centuries is on exhibit in this office. It is of interest not only as an exquisite reproduction of a pattern much studied by him, but also as a description of one who very nearly approximated the ideal teacher.

PUBLICATIONS OF THE OFFICE OF DIRECTOR OF STUDIES. New editions of the following *Bulletins* are on sale in the University Book Store:

Announcement of Courses 1938-39

Entrance Examination Questions of 1938

Entrance Information Bulletin for Foreign Students of 1939 is ready for distribution at the Admissions Bureau.

BUS TICKETS. Books containing ten bus tickets each can be purchased from the ticket seller at \$3.00 per book.

RUMMAGE SALE. Out of a total sum of one hundred and twelve dollars and sixty-one cents obtained from the rummage sale, one hundred dollars have been given to help Dr. Brown's maternity clinic. The Yenching Faculty Women's Association wishes to thank all those who had helped in this worthy undertaking.

CHINESE MUSIC TEACHER. There is now living on the campus a Chinese musician who is experienced in teaching Chinese instruments. Those interested may consult with the Music Department:

*Material for this Bulletin should be sent IN WRITING
to the Office of the President before Wednesday noon of each week*

YENCHING UNIVERSITY

Faculty Bulletin

(Issued by President's Office)

No. 25

February 25, 1939

Sunday, February 26

- 8:00 a.m. Sheng Kung Hui—Sage Chapel (In Chinese)
9:30 a.m. Campus Sunday School—Ninde Hall
9:30 a.m. Workmen's Service—Workmen's Social Centre
Leader: Miss Fan Hsi-ch'un
10:30 a.m. University Service—Ninde Chapel
Preacher: Dr. J. F. Li
Subject: "A More Difficult Path"
5:00 p.m. English Vespers—Ninde Chapel (See note)
Preacher: Rev. John R. Fleming
Subject: "The Renewing of Our Minds"
7:30 p.m. Sheng Kung Hui Members' Tea Party—Home of Mr. & Mrs. Y. L. Li

Monday, February 27

- 4:30 p.m. Faculty Tennis Club Meeting—President's House (See note)

Tuesday, February 28

- 8:55 a.m. Ninde Chapel—Mr. J. D. Subilia
Sage Chapel—Mr. K. Y. Ma
5:15 p.m. Sage Chapel—Lenten Service (See note)
Rev. E. O. Griffiths
"What is meant by Redemption?"
8:00 p.m. Faculty Discussion Group—President's House (See note)
8:30 p.m. Victrola Concert—63 Yen Nan Yuan

Wednesday, March 1

- 8:55 a.m. Ninde Chapel—Mr. J. D. Subilia
Sage Chapel—Mr. K. Y. Ma

Thursday, March 2

- 8:55 a.m. Ninde Chapel—Mr. J. D. Subilia
Sage Chapel—Mr. K. Y. Ma
6:45 p.m. Chorus—Ninde Hall
8:00 p.m. Badminton Matches—Warner Gymnasium (See note)

Friday, March 3

- 8:55 a.m. Ninde Chapel—Reading—Mr. S. Withers Green
Sage Chapel—Poetry Reading—Mr. Harold Shadick

Saturday, March 4

- 8:55 a.m. Ninde Chapel—Dr. T. C. Chao
Service for Prayer and Meditation

SPECIAL NOTES

ENGLISH VESPERS. The Rev. John Fleming is appointed by the Church of Scotland to their Mission in Manchuria.

FACULTY TENNIS CLUB. Tennis time is nearly here. A meeting of the Faculty Tennis Club is called for Monday, February 27, at the President's House at 4:30 p.m.

Agenda :

Reception for all
Report of last year
Election of new officers
Suggestions
Refreshments

LENTEN SERVICES. A series of five meditations on the meaning of the Cross to be given by the Rev. E. O. Griffiths, Chaplain, British Embassy, on Tuesdays in Lent at 5:15 in Sage Chapel will begin on February 28.

FACULTY DISCUSSION GROUP. As announced in last week's *Bulletin*, the Faculty Discussion Group on Tuesday, February 28, 8:00 p.m. at the President's House, will take the form of a celebration for Mr. McBrier, while at the same time calling attention to the History of Yenching University being written by Dr. Galt, together with other matters connected with our developing historical consciousness.

BADMINTON MATCHES. The Men Student Badminton Team will play the Faculty team in 4 singles and 2 doubles at the Warner Gymnasium on March 2 at 8:00 p.m. All interested are welcome to come to watch and after the matches to play.

MADRAS CONFERENCE. A list of the material (books, pamphlets and papers) brought by Dean Chao from the Madras Conference, is posted in Ninde Library, and any item may be borrowed through the Librarian, Mr. C. Yü (Ninde 210).

PRESIDENT STUART is planning to make a trip to Shanghai at the request of the Rockefeller Foundation to discuss plans for continued cooperation. He hopes to be back here within ten days from the time of departure, which will probably be on February 26.

MRS. ARTHUR RUGH. A cable has been received stating that Mrs. Arthur Rugh sailed recently for Shanghai. This change of plan is apparently due to her desire to help Mr. Rugh in packing and in other arrangements for returning to U.S.A.

*Material for this Bulletin should be sent IN WRITING
to the Office of the President before Wednesday noon of each week*

YENCHING UNIVERSITY

Faculty Bulletin

(Issued by President's Office)

No. 26

March 4, 1939

Sunday, March 5

- 8:00 a.m. Sheng Kung Hui—Sage Chapel (In English)
9:30 a.m. Campus Sunday School—Ninde Hall
9:30 a.m. Workmen's Service—Workmen's Social Centre
Leader: Mr. Chang Lien-sheng
10:30 a.m. University Service—Ninde Chapel
Preacher: Dr. T. C. Chao
Subject: "Our Common Prayer"
5:00 p.m. English Vespers—Ninde Chapel
Preacher: The Chaplain
Subject: "The Beatitude of the Forgiven"

Monday, March 6

No University Council (See note)

- 8:00 p.m. Lang Jun Yuan Garden Meeting—House 20 (See note)

Tuesday, March 7

- 8:55 a.m. Ninde Chapel—Six Men Group
Sage Chapel—Mrs. R. C. Sailer
5:15 p.m. Sage Chapel—Lenten Service
Rev. E. O. Griffiths
"Jesus' Attitude Towards Sin"
8:00 p.m. Faculty Discussion Group—President's House
Leader: Mr. J.-D. Subilia
Subject: "Problems around the Madras Conference"
8:30 p.m. Victrola Concert—63 Yen Nan Yuan

Wednesday, March 8

- 8:55 a.m. Ninde Chapel—Six Men Group
Sage Chapel—Mrs. R. C. Sailer

Thursday, March 9

- 8:55 a.m. Ninde Chapel—Six Men Group
Sage Chapel—Mrs. R. C. Sailer
4:20 p.m. University Assembly—Bashford Auditorium
Speaker: Dr. T. C. Chao
6:45 p.m. Chorus

Friday, March 10

- 8:55 a.m. Ninde Chapel—Six Men Group
Sage Chapel—Mrs. R. C. Sailer

Saturday, March 11

- 8:55 a.m. Ninde Chapel—Dr. T. C. Chao
Service for Prayer and Meditation

SPECIAL NOTES

UNIVERSITY COUNCIL. There will be no meeting of the University Council next Monday. The March meeting will be scheduled on the first Monday after the President's return from Shanghai.

LANG JUN YUAN GARDEN MEETING. There will be a Lang Jun Yuan Garden meeting on Monday, March 6, 8:00 p.m. at House 20.

SUPPLEMENT TO STUDENT DIRECTORY 1938-39.

SPRING SEMESTER, 1939.

學號 R.N.	Name	姓名	班級	籍貫	住所 Add.
38484	Chao Pao Jen	趙寶初	化學三附	河北天津	二樓
38522	Ch'eng Chung Ya	程忠亞	政治研一	江蘇崑山	五樓
38518	Chiao Shou Hsun	焦守訓	化學研一	山東黃縣	南宿舍
36521	Fang Hsing	方行	化學研一	江蘇吳縣	一樓
38519	Hsing Chao Chun	星兆鈞	教育研一	河北固安	三樓
35124	Hu Chi	胡熾	政治三	廣東順德	六樓
34104	Hu Ch'i Yin	胡啟寅	新聞四	陝西榆林	五樓
38652	Hsü Hai Ch'ao	徐海超	物理特	遼寧遼陽	蔚秀園
38520	Ts'ai Nien Su	蔡念蘇	化學研一	廣東南海	成府
38521	Wang Chih Yi	王之翊	生物研一	河北豐潤	一樓
37276	Wu Chung Min	吳忠民	物理二	湖北雲夢	三樓
38653	Wu Tsu Fen	吳祖芬	化學特	廣東四會	蔚秀園
37245	Yang Fu Sen	楊富森	生物特二	河北蠡縣	六樓
W34016	Ch'eng Lo Te	程樂德	生物特四	湖北漢口	二院
W38433	Chou Min Sheng	周敏生	教育二附	福建閩侯	一院
W34033	Ho Mei Ying	何美英	生物三	河北密雲	一院
W38505	Tang Chi Hsueh	唐冀雪	生物研一	河北河間	一院
W36073	Wu En Ya	伍恩亞	教育二	廣東台山	四院
W33104	Yang Yu Feng	楊友鳳	生物特四	廣東南海	一院

Material for this Bulletin should be sent *IN WRITING* to the Office of the President before Wednesday noon of each week

COMMITTEE ON COMMUNITY WELFARE

Mid-Winter Report

The Committee has carried on relief work for approximately three months and members of the University will be interested to know something of the relief measure adopted. The following statement of facts is based upon reports made to the Committee at its last meeting on February 9:

Total number of applications for relief recorded in the Office:

Relief Measures applied as follows:

Persons receiving free grain tickets.....	87
Persons receiving free coal tickets.....	48
Persons receiving relief funds.....	26
Men employed in the workmen's squad.....	75
Persons receiving gifts of clothing.....	50
Introduced to paying jobs.....	33
Help for funerals.....	2
Introduced to clinics or hospitals.....	28
Persons receiving loans, without interest.....	26
Persons receiving loans of bedding.....	8

Total cases of relief by above measures..... 384

(In this total are included 34 cases in which more than one form of relief was given)

In addition to the above the Committee has undertaken special measures for the nutrition of children. Two stations have been opened for the distribution of "bean milk" (*ton Chiang*). One of these is located at the outside clinic on the campus, administered by Mrs. Adolph and the University physicians. The other is located in Haitien at the clinic conducted by Dr. Brown. At these two stations a total of 42 children receive their portions of milk daily. Miss Hu Jung Te, a senior student in the Department of Home Economics is supervising this relief project.

The members of the "Case Committee", a sub-committee of the General Committee, are contributing very freely their time and thought in determining the measures of relief best adapted to each case. Under the supervision of Mrs. Cheng Lin-chuang three students from the Department of Sociology, Miss Liu Yi-cheng and Messrs. T'an Hsien-hwang and Ch'i Shih-ch'ang, have given valuable assistance in the house to house investigation of families applying for help.

H. S. G.

February 23, 1939

REPORT OF THE COMMISSIONER OF THE GENERAL LAND OFFICE

IN RESPONSE TO A RESOLUTION PASSED BY THE HOUSE OF REPRESENTATIVES
MAY 15, 1890

AND TO A RESOLUTION PASSED BY THE SENATE
MAY 15, 1890

AND TO A RESOLUTION PASSED BY THE HOUSE OF REPRESENTATIVES
MAY 15, 1890

AND TO A RESOLUTION PASSED BY THE SENATE
MAY 15, 1890

AND TO A RESOLUTION PASSED BY THE HOUSE OF REPRESENTATIVES
MAY 15, 1890

YENCHING UNIVERSITY

Faculty Bulletin

(Issued by President's Office)

No. 27

March 11, 1939

Sunday, March 12

- 8:00 a.m. Sheng Kung Hui—Sage Chapel (In Chinese)
9:30 a.m. Campus Sunday School—Ninde Hall
9:30 a.m. Workmen's Service—Workmen's Social Centre
Leader: Mr. Hu Jen-an
10:30 a.m. University Service—Ninde Chapel
Preacher: Dr. J. F. Li
Subject: "A More Refined Offering"
5:00 p.m. English Vespers—Ninde Chapel
Preacher: Miss Myfanwy Wood
Subject: "The Trivial Round" and *Worship*.

Monday, March 13

- 4:10 p.m. University Council—President's House

Tuesday, March 14

- 8:55 a.m. Ninde Chapel—Mrs. R. C. Sailer
Sage Chapel—*Six Men Group*
5:15 p.m. Sage Chapel—Lenten Service
Rev. E. O. Griffiths
"The Necessity of the Cross"
8:00 p.m. Faculty Discussion Group—President's House (See note)
Speakers: Dr. J. L. Stuart
Mr. E. R. Lapwood
8:30 p.m. Victrola Concert—63 Yen Nan Yuan

Wednesday, March 15

- 8:55 a.m. Ninde Chapel—Mrs. R. C. Sailer
Sage Chapel—*Six Men Group*

Thursday, March 16

- 8:55 a.m. Ninde Chapel—Mrs. R. C. Sailer
Sage Chapel—*Six Men Group*
4:20 p.m. University Assembly—Bashford Auditorium
Speaker: Mrs. A. B. Frame
6:45 p.m. Chorus—Ninde Hall

Friday, March 17

- 8:55 a.m. Ninde Chapel—Mrs. R. C. Sailer
Sage Chapel—*Six Men Group*
8:00 p.m. Dance Program - Boyd Gymnasium (See note)

Saturday, March 18

- 8:55 a.m. Ninde Chapel—Dr. T. C. Chao
Service for Prayer and Meditation

SPECIAL NOTES

FACULTY DISCUSSION GROUP. Dr. Stuart will tell of his trip to Shanghai and report general impressions as influenced by this trip. Mr. Lapwood also will speak briefly about the Industrial Cooperatives Movement.

DANCE PROGRAM. MAY 17, 1939 is the date for the *Dance Program* which will be presented by the members of the Dance Club of the Women's College Physical Education Department. It is at eight o'clock in the evening in Boyd Gymnasium.

INTER-LIBRARY LOAN. The librarian regrets to announce that for reasons of inconvenience the inter-library loan service between our own library and libraries in the city is suspended until further notice.

THE LABORATORY REPORT OF YENCHING WATER AND MILK.

<i>Cow's milk</i>	Gas	nil
	Bac.	32000 per c.c.
	B. Coli	negative
<i>Artisan Well Water</i>	Gas	nil
	Bac.	25 per c.c.
	B. Coli	Negative

*Material for this Bulletin should be sent IN WRITING
to the Office of the President before Wednesday noon of each week*

YENCHING UNIVERSITY

Faculty Bulletin

(Issued by President's Office)

No. 28

March 18, 1939

Sunday, March 19

- 8:00 a.m. Sheng Kung Hui—Sage Chapel (In English)
9:30 a.m. Campus Sunday School—Ninde Hall
9:30 a.m. Workmen's Service—Workmen's Social Centre
Leader: Miss Sun Shu-tien
10:30 a.m. University Service—Ninde Chapel
Preacher: Dr. T. C. Chao
Subject: "The Heart of Religion"
5:00 p.m. English Vespers—Ninde Chapel
Preacher: Mr. Arthur Ruth
Subject: "Is Christian mystical experience real?"

Monday, March 20

Tuesday, March 21

- 8:55 a.m. Ninde Chapel—Mr. Wang Ts'ai-chih
Sage Chapel—Mrs. S. Withers Green
5:15 p.m. Sage Chapel—Lenten Service
Rev. E. O. Griffiths
"What does the Cross teach us about God?"
8:00 p.m. Faculty Discussion Group—President's House (See note)
Speaker: Mr. J. D. White
8:30 p.m. Victrola Concert—63 Yen Nan Yuan

Wednesday, March 22

- 8:55 a.m. Ninde Chapel—Mr. Hu Jen-an
Sage Chapel—Mr. S. Withers Green

Thursday, March 23

- 8:55 a.m. Ninde Chapel—Mr. P'ang Chih-k'un
Sage Chapel—Mr. S. Withers Green
6:45 p.m. Chorus—Ninde Hall

Friday, March 24

- 8:55 a.m. Ninde Chapel—*Music*—Mrs. Bliss Wiant
Sage Chapel—*Music*—Mrs. E. O. Wilson

Saturday, March 25

- 8:55 a.m. Ninde Chapel—Dr. T. C. Chao
Service for Prayer and Meditation

SPECIAL NOTES

FACULTY DISCUSSION GROUP. The speaker for next Tuesday Faculty Discussion Group is Mr. J. D. White, formerly of Yenching and now correspondent for the Associated Press.

McBRIER CELEBRATION IN NEW YORK. A letter has been received from our New York office telling of the plans for the "McBrier Celebration" in that city on February 23. This was to take the form of a dinner at the Waldorf-Astoria Hotel for about one hundred friends of Mr. McBrier as guests. Mr. Henry R. Luce had consented to be toast-master. Dr. E. H. Hume and Mr. Hubert Liang were to be the principal speakers. The letter sent by us for the occasion had been received (February 13) and it was hoped that our scrolls would arrive in time.

PA-LI-CHUANG. There will be an exhibition of rattan chairs and other handicrafts from the workshops of the Hill-Murray Institute for the Blind at 61, South Compound on Saturday, March 18, from 10:00 a.m. to 4:00 p.m. Your inspection is invited.

SMALL POX VACCINATIONS are now being given at the Men's Infirmary during regular clinic hours. Members of the faculty and staff and their families are therefore requested to avail themselves of this immunity as soon as possible.

DANCE PROGRAM. MAY 17, 1939 is the date for the *Dance Program* which will be presented by the members of the Dance Club of the Women's College Physical Education Department. It is at eight o'clock in the evening in Boyd Gymnasium,

*Material for this Bulletin should be sent IN WRITING
to the Office of the President before Wednesday noon of each week*

YENCHING UNIVERSITY

Faculty Bulletin

(Issued by President's Office)

No. 29

March 25, 1939

Sunday, March 26

- 8:00 a.m. Sheng Kung Hui—Sage Chapel (In Chinese)
9:30 a.m. Campus Sunday School—Ninde Hall
9:30 a.m. Workmen's Service—Workmen's Social Centre
Leader: Miss Wang Hsueh Ch'iao
10:30 a.m. University Service—Ninde Chapel
Preacher: Mr. C. S. Hsieh
Subject: "Wait and See"
5:00 p.m. English Vespers—Ninde Chapel
Preacher: Rev. W. W. Davis
Subject: "A Sustaining Vision"

Monday, March 27

- 4:30 p.m. Faculty Tennis Club Meeting—Faculty Tennis Courts (See note)

Tuesday, March 28

- 8:55 a.m. Ninde Chapel—Mr. S. Withers Green
Sage Chapel—Mr. Wang Ts'ai-chih
5:15 p.m. Sage Chapel—Lenten Service
Rev. E. O. Griffiths
"The Cross and today"
8:00 p.m. Faculty Discussion Group—President's House (See note)
8:30 p.m. Victrola Concert—63 Yen Nan Yuan

Wednesday, March 29

- 8:55 a.m. Ninde Chapel—Mr. S. Withers Green
Sage Chapel—Mr. Hu Jen-an

Thursday, March 30

- 8:55 a.m. Ninde Chapel—Mr. S. Withers Green
Sage Chapel—Mr. P'ang Chih-k'un
6:45 p.m. Chorus—Ninde Hall

Friday, March 31

- 8:55 a.m. Ninde Chapel—Joint Service
Organ Music—Mr. Bliss Wiant
8:00 p.m. German Song Recital—Bashford Auditorium (See note)

Saturday, April 1

- 8:55 a.m. Ninde Chapel—Dr. T. C. Chao
Service for Prayer and Meditation

SPECIAL NOTES

FACULTY TENNIS CLUB. Unless the weather is unsuitable for the occasion, the Faculty Tennis Club will hold its formal opening of this season at 4:30 p.m. on Monday, March 27, at the faculty tennis courts. A match among members is planned for that afternoon, and it is, therefore, the earnest desire of the Committee that all members will turn out promptly so that time will be allowed for a simple tea and a brief discussion of business.

FACULTY DISCUSSION GROUP. The Faculty Discussion on next Tuesday will be on the currency issue in North China, and will be led by Mr. Charles Reed of the American Embassy, who has been giving especial study to the problem, and Dr. W. B. Pettus. It is hoped that our own specialists in this subject will also take part in the discussion.

GERMAN SONG RECITAL. An outstanding musical event of the Yenching season will take place on Friday evening, March 31, when Fraulein Ria von Hessert of Berlin will favor us with a recital of German lieder in Bashford Auditorium at 8 p.m. She is one of the great teachers of singing in Germany today and is in Peking for a short visit with relatives. As a recitalist she is (according to press reports from leading newspapers) highly musical with a resonant, beautiful, well-modulated voice whose dramatic presentation stamps her as a great artist. You must not miss this opportunity to hear a first class performer. Reserved seats are one dollar and ordinary seats are 40 cents. The Bookstore will sell tickets.

ART EXHIBIT. Last year our community was much interested in an exhibit of paintings by Chinese artists whose subjects were drawn from the West. This spring we are fortunate in having an exhibition of Chinese paintings by a Western artist. Miss Alison Stilwell has kindly consented to exhibit her paintings in Miner Hall beginning Wednesday.

FOREIGN WOMEN'S AID. Anyone having clothes to contribute for distribution by this organization should send them to Miss Augusta Wagner, 57 South Compound.

TEACHER WANTED. The Yentung School for the children of our foreign faculty members is without a teacher for next year. We would be grateful if members of the community would keep this in mind, and would let Mrs. Sailer know immediately should they hear of anyone who might be available for the position.

*Material for this Bulletin should be sent IN WRITING
to the Office of the President before Wednesday noon of each week.*

YENCHING UNIVERSITY

Faculty Bulletin

(Issued by President's Office)

No. 30

April 1, 1939

Sunday, April 2 Palm Sunday

- 8:00 a.m. Sheng Kung Hui—Sage Chapel (In English)
9:30 a.m. Campus Sunday School—Ninde Hall
9:30 a.m. Workmen's Service—Workmen's Social Centre
Leader: Mr. Pang Chih-kun
10:30 a.m. University Service—Ninde Chapel
Preacher: Dr. T. C. Chao
Subject: "The Triumphant Entry"
6:30 p.m. English Vespers—Ninde Chapel (See note)
Preacher: The Chaplain
Subject: "Palm Sunday"

Monday, April 3

No University Council

- 6:30 p.m. Holy Week Service—Sage Chapel
Leader: Dr. T. C. Chao
Subject: "Creation"
6:45 p.m. South Compound Supper—House 51 (See note)

Tuesday, April 4

- 8:55 a.m. Ninde Chapel—Dr. T. C. Chao
"Cleansing the Temple"
Sage Chapel—Dr. J. F. Li
6:30 p.m. Holy Week Service—Sage Chapel
Leader: Dr. T. C. Chao
Subject: "Incarnation"
8:00 p.m. Faculty Discussion Group—President's House (See note)
8:30 p.m. Victrola Concert—63 Yen Nan Yuan

Wednesday, April 5

- 8:55 a.m. Ninde Chapel—Dr. T. C. Chao
"The Meaning of Life"
Sage Chapel—Dr. J. F. Li
6:30 p.m. Holy Week Service—Sage Chapel
Leader: Dr. T. C. Chao
Subject: "Salvation"

Thursday, April 6

- 8:55 a.m. Ninde Chapel—Dr. T. C. Chao
"Hindrances"
Sage Chapel—Dr. J. F. Li
6:45 p.m. Chorus—Ninde Hall
8:00 p.m. Holy Communion—Ninde Chapel (See note)
Dr. T. C. Chao and Dr. J. F. Li

Friday, April 7 Good Friday

- 8:55 a.m. Ninde Chapel—Dr. T. C. Chao
"Self-sacrifice"
Sage Chapel—Dr. J. F. Li
4:30 p.m. Good Friday Music—Ninde Chapel (See note)
8:00 p.m. Good Friday Service (In English)—Ninde Chapel
Vespers Choir

Saturday, April 8

- 8:55 a.m. Ninde Chapel—Dr. T. C. Chao
Service for Prayer and Meditation

SPECIAL NOTES

ENGLISH VESPERS. On April 2, English Vespers will be at 6:30 p.m. On Easter Sunday there will be a special service at 8:00 p.m. depicting the Easter story.

SOUTH COMPOUND SUPPER. The next South Compound Supper will be held at House 51 on Monday, April 3, at 6:45. The hosts and hostess will be Mr. and Mrs. Yang, Mr. and Mrs. Li, Miss Liang, Mrs. Chou and Miss Chou.

FACULTY DISCUSSION GROUP. The *Currency Problem*, postponed from last week in favor of Mr. Belden; will be the subject for this Tuesday. Miss Wagner, Mr. Chou Shun-hsin, Mr. Lindsay and other experts, it is hoped, will contribute to the discussion, of which Dean Ch'en will be the chairman.

COMMUNION SERVICE. On Thursday evening, April 6, at 8 p.m. in Ninde Chapel will be held the annual celebration of the institution of the Lord's Supper. As a part of this service, the student choir will sing a beautiful setting of the ancient words of the mass-music by the great French mystic, *Cesar Franck*. The various numbers to be sung include "Lord, have mercy" (*Kyrie*); "I believe" (*Credo*); "Holy, holy, holy" (*Sanctus, sanctus, sanctus*) and "O Lamb of God" (*Agnus Dei*).

GOOD FRIDAY MUSIC. On Good Friday afternoon at 4:30 the Music Club will give a concert of recorded music in Ninde Chapel of music appropriate for this day. Selections from the great masterpieces of the ages such as Gregorian Plainchant, Middle Ages and Reformation music will be heard at this concert.

PRESIDENT STUART is leaving Sunday afternoon to sail on S. S. "*Fansang*" for Shanghai. He will attend alumni reunions there on the afternoon and evening of April 8, and proceed to Hongkong for meetings of the presidents of Christian Colleges, China Foundation, for alumni reunions and other matters concerning the University.

*Material for this Bulletin should be sent IN WRITING
to the Office of the President before Wednesday noon of each week*

YENCHING UNIVERSITY

Faculty Bulletin

(Issued by President's Office)

No. 31

April 8, 1939

Sunday, April 9 Easter Sunday

8:00 a.m. Sheng Kung Hui—Sage Chapel (In Chinese)

10:00 a.m. Campus Sunday School—Ninde Hall

10:30 a.m. University Service and Baptism—*The Amphitheatre* (See note)

Preacher: Dr. T. C. Chao

Subject: "The Dawn"

2:00 a.m. Workmen Children Easter Party—Workmen's Social Centre

8:00 p.m. The Easter Story—Ninde Chapel

Monday, April 10

Tuesday, April 11

8:55 a.m. Ninde Chapel—Mr. Lin Ch'i-wu

Sage Chapel—Mr. Arthur Rugh

8:00 p.m. Faculty Discussion Group—President's House (See note)

Speaker: Professor W. S. Ament

Subject: "Experiments and Problems in Education in California"

8:30 p.m. Victrola Concert—63 Yen Nan Yuan

Wednesday, April 12

8:55 a.m. Ninde Chapel—Mr. Lin Ch'i-wu

Sage Chapel—Mr. Arthur Rugh

Thursday, April 13

8:55 a.m. Ninde Chapel—Mr. Lin Ch'i-wu

Sage Chapel—Mr. Arthur Rugh

6:45 p.m. Chorus—Ninde Hall

Friday, April 14

8:55 a.m. Ninde Chapel—Joint Service of Ninde & Sage Chapels

Poetry—Mr. H. E. Shadick

4:15 p.m. Children's Concert—Bashford Auditorium (See note)

Saturday, April 15

8:55 a.m. Ninde Chapel—Dr. T. C. Chao

Service for Prayer and Meditation

SPECIAL NOTES

UNITED SERVICE ON EASTER SUNDAY. The attention of the University community is called to the Easter Service on April 9. It will be held in the amphitheatre, east of the bell pavilion. There will be special music, the baptism of children and adults and united worship. The Hammond Organ will be used in the open-air for the first time. A picnic dinner will immediately follow the Service for those who have signed the slips.

VESPER SERVICE. There will be no Vesper Service on Easter Sunday, nor on April 16 and 23.

FACULTY DISCUSSION GROUP. Visiting Professor Ament will tell of "*Experiments and Problems in Education in California.*" This year our group has not discussed educational problems, and this meeting offers a special opportunity.

CHILDREN'S CONCERT. On Friday, April 14, at 4:15 p.m. in Bashford Auditorium will be held a concert played entirely by children of our community. The public is invited to hear these aspiring young musicians.

ALUMNI HOME-COMING DAY POSTPONED. In accordance with the decision made at the first meeting of the *Committee on Preparation for Alumni Day*, the Home-Coming Day holiday this year has been definitely postponed to May 27 in order to enable our alumni to see Dr. Stuart who is supposed to return from his southern trip by that time.

THE LABORATORY REPORT OF YENCHING WATER AND MILK.

Dairy Milk	Gas	nil
	Bacteria	37600 per c.c.
	C. Coli	negative
Artisan Well Water	Gas	nil
	Bacteria	21 per c.c.
	B. Coli	negative

*Material for this Bulletin should be sent IN WRITING
to the Office of the President before Wednesday noon of each week*

YENCHING UNIVERSITY

Faculty Bulletin

(Issued by President's Office)

No. 32

April 15, 1939

Sunday, April 16

- 8:00 a.m. Sheng Kung Hui—Sage Chapel (In English)
9:30 a.m. Workmen Service—Workmen's Social Centre
Leader: Mr. K. Y. Ma
10:30 a.m. University Service—Ninde Chapel
Preacher: Dr. T. C. Chao
Subject: "On the Eighth Day"

Monday, April 17

Spring Recess Begins

- 3:45 p.m. Tennis-Round Robin—Faculty Tennis Court (*see note*)

Tuesday, April 18

- 8:00 p.m. Faculty Discussion Group—President's House (*See note*)

SPECIAL NOTES

TENNIS ROUND ROBIN. Our Club is inviting students to join us in a Round Robin (change partner) tournament on Monday afternoon. This is for all players, good and not-so-good. Everyone will have chances to play, and simple tea will be served. Please come at 3:45 if you can, but you can join in later if you prefer.

FACULTY DISCUSSION GROUP. Dr. C. F. Wu who returned to the campus on Tuesday, will lead on "*Reminiscences of my recent trip South*".

ADMINISTRATIVE OFFICE HOURS. During the Spring Recess all administrative offices will be open from 9 to 12 o'clock on Tuesday, Wednesday, and Thursday mornings. But individual offices may make their own provisions.

LIBRARY HOURS. During the Spring Recess beginning from the afternoon of April 15 to April 23, the Library hours will be as follows:

April 15 (Saturday)	7:00—10:00 p.m.
April 16 (Sunday)	7:00—10:00 p.m.
April 17—21 (Monday—Friday)	9:00—12:00 a.m. (With stack service) 2:00—5:00 p.m. 7:00—10:00 p.m.
April 22 (Saturday)	9:00—12:00 a.m. (With stack service) 7:00—10:00 p.m.
April 23 (Sunday)	7:00—10:00 p.m.

THE McBRIER CELEBRATION. A program of the proceedings connected with the dinner given by the Trustees in New York in honor of Mr. McBrier's services to the University, and certain newspaper clippings and reports concerning the event, may be seen in the President's office.

PHYSICAL EXAMINATION FOR MARRIED LADIES. Will all married ladies on the campus who wish to have their annual examination, please make appointment to be examined between April 24 and 29. Phone Dr. Jenkins

INOCULATIONS. All who are expecting to go on journeys this summer, please see that you get your proper inoculations, and a certificate for the same, before leaving the campus.

A BLUE SCARF was left in Ninde Chapel on Thursday evening. Will owner please apply to Miss Wood.

NOTES FOR FACULTY BULLETIN. During the holidays material for the April 22 Bulletin must be in the President's Office **on Tuesday, April 18.**

YENCHING UNIVERSITY

Faculty Bulletin

(Issued by President's Office)

No. 33

April 21, 1939

Sunday, April 23

- 8:00 a.m. Sheng Kung Hui—Sage Chapel (In Chinese)
9:30 a.m. Workmen's Service—Workmen's Social Centre
Leader: Mr. Yang Shu-sheng
10:30 a.m. University Service—Ninde Chapel
Preacher: Dr. J. F. Li
Subject: "Feed my Sheep"

Monday, April 24

Tuesday, April 25

- 8:55 a.m. Ninde Chapel—Mr. Arthur Rugh
Sage Chapel—Mr. Lin Ch'i-wu
8:00 p.m. Faculty Discussion Group—President's House (See note)
8:30 p.m. Victrola Concert—63 Yen Nan Yuan

Wednesday, April 26

- 8:55 a.m. Ninde Chapel—Mr. Arthur Rugh
Sage Chapel—Mr. Lin Ch'i-wu

Thursday, April 27

- 8:55 a.m. Ninde Chapel—Mr. Arthur Rugh
Sage Chapel—Mr. Lin Ch'i-wu
4:20 a.m. University Assembly—Bashford Auditorium
Speaker: Mr. Chang Tung-sun
Subject: "The Morality of Co-operation"
6:45 p.m. Chorus—Ninde Hall

Friday, April 28

- 8:55 a.m. Ninde Chapel—Joint Service of Ninde & Sage Chapels
Musical Service

Saturday, April 29

- 8:55 a.m. Ninde Chapel—Dr. T. C. Chao
Service for Prayer and Meditation

SPECIAL NOTES

FACULTY DISCUSSION GROUP. There is every hope that Dr. Porter will be back to give fresh news from Shansi. This will be the program unless there is further notice.

THE BUS SERVICE. The Chairman of the Advisory Committee on the Bus Service recently received a communication dated April 15, and signed by twenty-six members of the Faculty. The communication refers especially to over-loading of the bus leaving the city at 6:00 o'clock last Saturday evening, and to certain other unsatisfactory conditions in the service.

The Chairman and the Controller have given consideration to these matters. The Controller admits that the Bus Manager failed to estimate accurately the size of the group to be brought from the city on Saturday evening. Since vacation had begun it seemed reasonable to suppose that the number returning to the University Saturday evening would not be large. (The Chairman of the Committee had shared in this opinion—which proved to be wrong). When the situation was reported to the Manager a second bus was immediately sent to Ya Pei, and came back with seven passengers. (Evidently people on the over-loaded bus preferred to remain on it rather than to wait for another bus.) In discussion the Controller agreed that one or two extra busses would be sent in advance to meet the 6:00 o'clock engagement at the Y.M.C.A. for a period as an experiment—to meet the frequently occurring congestion at that point.

The communication referred also to the taking of the bus by persons at the South Gate of the Campus, or at points between the South Gate and the West Gate. The rule on this point is well known but when persons meet the bus and insist on its stopping by placing themselves directly in front of it—what can the driver do? The regulation is thus seen to be extremely difficult to enforce. Special measures have already been taken to deal with the matter, and others will be adopted. Faculty and students are again reminded of the rule and asked to cooperate in its enforcement.

In complaints of overloading which come in from time to time fears are often expressed as to the strength of the chassis and engine. On this point the following facts should be reassuring:

Loading capacity of the busses :	Diesel	7,260 lbs.
	Small Dodge	9,500 lbs.
	Large Dodge	11,500 lbs.

If the average weight of passengers be taken at 140 lbs. it will be seen that 50 passengers would aggregate 7,000 lbs. and 60 passengers 8,400 lbs. Thus the strain on bus capacity as to strength should not cause anxiety.

The communication alleges that complaints presented to the Committee have not received due attention. The Chairman knows of no cases in which written communications have not been carefully considered and have not received a reply.

In conclusion the Chairman would point out that to meet and report inconvenient experiences is one thing—we all do that. But in responsible administration to devise means of remedying one defect without causing another, or to meet the conveniences of some people without causing inconveniences to others, is "something else again".

The Chairman and the Controller appreciate the concrete data and suggestions in the communication referred to and will continue their endeavors to give heed to all reasonable complaints.

Howard S. Galt,
Chairman.

DR. H. H. FENG. Dr. T. C. Li has recently received a letter from Dr. H. H. Feng, formerly eye specialist in our Medical Office, in which she sent greetings to her friends at Yenching. She stated: "..... Trachoma is treated with Prontylin. Cure can be expected within 10 days to a month..... I am now spending many periods a week in the research laboratory of Dr. Tinggeoon. He is a well known authority on virus diseases of which trachoma is one..... Since February the Directors of this Medical Center and the Institute of Ophthalmology have granted me the appointment as a voluntary assistant here. The conferring of this honor was entirely unexpected as the Center is reputed to be an extremely "Hight brow" one. I am applying myself diligently to my work. Even in the evenings, we go down town to attend the more advance lectures"

YENCHING UNIVERSITY

Faculty Bulletin

(Issued by President's Office)

No. 34

April 29, 1939

Sunday, April 30

- 8:00 a.m. Sheng Kung Hui—Sage Chapel (In English)
9:30 a.m. Campus Sunday School—Ninde Chapel
9:30 a.m. Workmen's Service—Workmen's Social Centre
Leader: Miss Ma Feng-chuan
10:30 a.m. University Service—Ninde Chapel
Preacher: Dr. T. C. Chao
Subject: "We are Superficial"
6:30 p.m. English Vespers—Ninde Chapel
Preacher: Dr. L. C. Porter
Subject: "Testifying to Life through Life"

Monday, May 1

No University Council (See note)

Tuesday, May 2

- 8:55 a.m. Ninde Chapel—*The Vine Group*
Sage Chapel—Miss Grace M. Boynton
8:00 p.m. Faculty Discussion Group—President's House (See note)
8:30 p.m. Victrola Concert—63 Yen Nan Yuan

Wednesday, May 3

- 8:55 a.m. Ninde Chapel—*The Vine Group*
Sage Chapel—Miss Grace M. Boynton

Thursday, May 4

- 8:55 a.m. Ninde Chapel—*The Vine Group*
Sage Chapel—Miss Grace M. Boynton
4:15 p.m. University Lecture—McBrier 103 (See note)
Lecturer: Dr. von Koenigswald of Java
Subject: "The relationship between the fossil mammalian faunae of
Java and China, with special reference to Early Man"
6:45 p.m. Chorus—Ninde Hall

Friday, May 5

- 8:55 a.m. Ninde Chapel—*The Vine Group*

Saturday, May 6

- 8:55 a.m. Ninde Chapel—Dr. T. C. Chao
Service for Prayer and Meditation

SPECIAL NOTES

UNIVERSITY COUNCIL. There will be no meeting of the University Council until after the President's return from the South.

FACULTY DISCUSSION GROUP. Mrs. Frame, former Dean of our Women's College, will lead a discussion on "India and its Problems" on the basis of her recent trip.

DISTINGUISHED LECTURER FROM JAVA. Since the *JAVA MAN* was discovered and later proved to be a near relative in point of time with the *PEKING MAN*, extremely interesting finds have been made in Java. The scientist in charge of these recent excavations, Dr. von Koenigswald, has been visiting Peking, and has consented to lecture at Yenching on Thursday afternoon, May 4, at 4:15 p.m. in McBrier 103. The lecture will be in English and will be illustrated with lantern slides.

DEPARTMENT OF MUSIC NOTES. The month of May will be a busy one for the Department of Music, for it will offer three student recitals and three concerts. The dates of the various programs are as follows:

- May 5, Friday, at 7 P.M. — Student Recital of the pupils of Mr. Kupka consisting of three concertos.
- May 8, Monday, at 8 P.M. — Student Recital of the pupils of the Department.
- May 19, Friday — An out-door concert of the Orchestra with the Harmonica Band on the Island.
- May 22, Monday, at 8 P.M. — Student Recital.
- May 27, Saturday, at 7 P.M. — The Yenching Chorus will sing *Brahms'* "Requiem", and in addition several piano and vocal solos of *Brahms* will be presented.
- May 29, Monday, at 8:30 P.M. — The Chorus will present its annual spring concert in Peking.

UNIVERSITY TRACK MEET. Plans are being made for an interesting Home Track Meet to be held on the afternoon of May 13. Both men and women students will participate in this meet. Details of the program will be given later.

*Material for this Bulletin should be sent IN WRITING
to the Office of the President before Wednesday noon of each week*

YENCHING UNIVERSITY

Faculty Bulletin

(Issued by President's Office)

No. 35

May 6, 1939

Sunday, May 7

- 8:00 a.m. Sheng Kung Hui—Sage Chapel (In Chinese)
9:30 a.m. Campus Sunday School—Ninde Hall
9:30 a.m. Workmen's Service—Workmen's Social Centre
Leader: Hsieh Chi-en
10:30 a.m. University Service—Ninde Chapel
Preacher: Dr. T. C. Chao
Subject: "Sand and Rock"
6:30 p.m. English Vespers—Ninde Chapel
Preacher: Mr. J. D. Subilia
Subject: "Victorious Surrender"

Monday, May 8

- 6:45 p.m. South Compound Supper—House 63 (See note)
8:00 p.m. Student Recital—Bashford Auditorium
by pupils of Music Department

Tuesday, May 9

- 8:55 a.m. Ninde Chapel—Miss Grace M. Boynton
Sage Chapel—*The Vine Group*
8:00 p.m. Faculty Discussion Group—President House (See note)
Speaker: Professor W. S. Ament
Subject: "Experiments and Problems in Education in California"
8:30 p.m. Victrola Concert—63 Yen Nan Yuan

Wednesday, May 10

- 8:55 a.m. Ninde Chapel—Miss Grace M. Boynton
Sage Chapel—*The Vine Group*

Thursday, May 11

- 8:55 a.m. Ninde Chapel—Miss Grace M. Boynton
Sage Chapel—*The Vine Group*
6:45 p.m. Chorus—Ninde Hall

Friday, May 12

- 8:55 a.m. Ninde Chapel—Miss Grace M. Boynton
Sage Chapel—*The Vine Group*

Saturday, May 13

- 8:55 a.m. Ninde Chapel—Dr. T. C. Chao
Service for Prayer and Meditation

SPECIAL NOTES

SOUTH COMPOUND SUPPER. The next South Compound Supper will be held at House 63, on Monday, May 8, at 6:45 p.m. The hosts will be Mr. & Mrs. Taylor and Mr. & Mrs. Wiant and Mr. Bevan and Mr. Withers Green.

FACULTY DISCUSSION GROUP. Visiting Professor Ament will tell of "*Experiments and Problems in Education in California*". This meeting, postponed from April 11, offers a special opportunity for discussing educational problems.

PHYSICAL EXAMINATION FOR FACULTY AND STAFF. All members of the faculty and staff are requested to have their annual physical examinations during the month of May. Please make appointments beforehand with the Medical Office for Men.

THE LABORATORY REPORT OF YENCHING WATER AND MILK.

Artisan Water

Gas 10 cc nil
Bacteria 177 per c.c.
B. Coli negative

Cow's milk

Gas 10 cc nil
Bacteria 56,000 per c.c.
B. Coli negative

*Material for this Bulletin should be sent IN WRITING
to the Office of the President before Wednesday noon of each week*

YENCHING UNIVERSITY

Faculty Bulletin

(Issued by President's Office)

No. 36

May 13, 1939

Sunday, May 14

- 8:00 a.m. Sheng Kung Hui—Sage Chapel (In English)
9:30 a.m. Campus Sunday School—Ninde Hall
9:30 a.m. Workmen's Service—Workmen's Social Centre
Leader: Miss Chang Mei-hua
10:30 a.m. University Service—Ninde Chapel
Preacher: Dr. T. C. Chao
Subject: "Power"
6:30 p.m. English Vespers—Ninde Chapel
Preacher: Mr. E. R. Lapwood
Subject: "Christianity—An Adventure"

Monday, May 15

Tuesday, May 16

- 8:55 a.m. Ninde Chapel—Miss Tseng Hsiu-hsiang
Sage Chapel—Yenta Social Service Group
8:00 p.m. Faculty Discussion Group—President's House (See note)
8:30 p.m. Victrola Concert—63 Yen Nan Yuan

Wednesday, May 17

- 8:55 a.m. Ninde Chapel—Miss Tseng Hsiu-hsiang
Sage Chapel—Yenta Social Service Group
8:00 p.m. Program of Dances—Boyd Gymnasium (See note)

Thursday, May 18

- 8:55 a.m. Ninde Chapel—Miss Tseng Hsiu-hsiang
Sage Chapel—Yenta Social Service Group
6:45 p.m. Chorus—Ninde Hall

Friday, May 19

- 8:55 a.m. Ninde Chapel—*Music*
Sage Chapel—Yenta Social Service Group

Saturday, May 20

- 8:55 a.m. Ninde Chapel—Dr. T. C. Chao
Service for Prayer and Meditation

SPECIAL NOTES

FACULTY DISCUSSION GROUP. In discussions with members of the community, it has been suggested to have an open meeting on the *University Bus Service*. Taking advantage of the free Tuesday evening next week, *May 16*, we will deliberate on this phase of the University business management.

PROGRAM OF DANCES. The Physical Education Department of the Women's College will present a *Program of Dances* on Wednesday night, *May 17*, at 8 o'clock in Boyd Gymnasium. The admission is thirty cents and fifty cents. Every seat is a reserved seat. The tickets are now on sale in the Book Store with diagram of the seating arrangement.

OUT-DOOR CONCERT. The concert announced for *May 19* has been postponed to *June 2*. Full announcements will be made later.

BORN. We take pleasure to announce that Mr. Lin Ch'i-wu is now the proud father of a son born on *May 7*, at 1:00 a.m. The little boy weighs seven pounds. Both mother and son are well.

YENTA COMMUNITY CHEST 1938—1939

Treasurer's Report

<i>Income</i>		<i>Expenditure</i>	
From faculty and staff.....	\$3900.78	To Haitien Maternity Center.....	\$ 400.00
From Students.....	366.01	To East Gate Clinic.....	600.00
From Interest in Bank.....	10.30	To Workman Social Center.....	480.00
Total.....	\$4277.09	To Yenta Relief Committee.....	2784.13
		Printing and Mimeographing....	12.96
		Total.....	4277.09

A list of contributions and contributors has been prepared and is now placed in the President's office. Any one who wishes may consult the list there.

*Material for this Bulletin should be sent IN WRITING
to the Office of the President before Wednesday noon of each week*

YENCHING UNIVERSITY

Faculty Bulletin

(Issued by President's Office)

No. 37

May 20, 1939

Sunday, May 21

- 8:00 a.m. Sheng Kung Hui—Sage Chapel (In Chinese)
9:30 a.m. Campus Sunday School—Ninde Hall
9:30 a.m. Workmen's Service—Workmen's Social Centre
Leader: Mr. Wang Ch'in-wang
10:30 a.m. University Service—Ninde Chapel
Preacher: Dr. J. F. Li
Subject: "An Inner Urge"
6:30 p.m. English Vespers—Ninde Chapel
Preacher: Miss Lucy M. Burt

Monday, May 22

- 8:00 p.m. Student Recital—Bashford Auditorium (See note)

Tuesday, May 23

- 8:55 a.m. Ninde Chapel—Yenta Social Service Group
Sage Chapel—Miss Tseng Hsiu-hsiang
8:00 p.m. Faculty Discussion Group—President's House
Speaker: President Stuart
No Victrola Concert (See note)

Wednesday, May 24

- 8:55 a.m. Ninde Chapel—Yenta Social Service Group
Sage Chapel—Miss Tseng Hsiu-hsiang
4:15 p.m. University Lectures—McBrier 103 (See note)
Speaker: Professor William S. Ament
Subject: "Literature and the Present World Situation especially in America"

Thursday, May 25

- 8:55 a.m. Ninde Chapel—Yenta Social Service Group
Sage Chapel—Miss Tseng Hsiu-hsiang
4:20 p.m. University Assembly—Bashford Auditorium (See note)
Honors Day
6:45 p.m. Chorus—Ninde Hall

Friday, May 26

- 8:55 a.m. Ninde Chapel—Joint Service of Ninde and Sage Chapels
Music—*Mr. Wiant will play the Organ*
8:00 p.m. Demonstration on Rural Reconstruction Activities—President House Lawn
by the Department of Education

Saturday, May 27

- ALUMNI HOME-COMING DAY** (See Program)
8:55 a.m. Ninde Chapel—Dr. T. C. Chao
Service for Prayer and Meditation

SPECIAL NOTES

STUDENT RECITAL. The second and final student recital of the year will take place in Bashford Auditorium at 8 p.m. Monday evening, May 22. The program will contain both vocal and piano solos from the works of the masters such as *Beethoven, Schubert, Brahms, Debussy, Ravel, and Rachmaninoff, etc.* The whole community is welcome to hear the program.

VICTROLA CONCERT. There will be no more concerts of recorded music until after the examinations.

UNIVERSITY LECTURE SPONSORED BY THE DEPARTMENT OF WESTERN LANGUAGES AND THE UNIVERSITY LECTURES COMMITTEE. The last public lecture of the season will be given under the above auspices by Professor William S. Ament of Scrips College, Claremont, California, visiting lecturer at Yenching University. Professor Ament during the present semester has been lecturing in the Department of Western Languages on "English and American Literature of the Past Fifty Years". The subject of his lecture on Thursday will be "*Literature and the Present World Situation especially in America*".

Following the lecture a farewell reception and tea for Professor and Mrs. Ament will be held in the President's House, to which all members of the Faculty are invited.

Unfortunately, in view of other engagements and the difficulty of securing steamer passage, Professor and Mrs. Ament are obliged to leave Yenching early and are sailing on May 27 to catch a steamer from Japan.

Professor Ament's coming to Yenching was made possible by the Claremont-China Foundation established by James W. Porter which provides for exchanges between the Claremont Colleges and China. It may be remembered that Professor and Mrs. Porter were at the Claremont Colleges during the spring of 1938 on this same Foundation. In addition to provision for an exchange of visiting lecturers the fund provides for a few scholarships for Chinese students at the Claremont Colleges and for purchases by the library of books relating to China.

Please note the day set for the lecture, *Wednesday, May 24, 4:15 in McBrier 103.*

HONORS DAY. The annual University Honors Day celebration for this year will take place at the Assembly hour, 4:20 p.m. on Thursday, May 25. Printed programs will be distributed when ready.

REQUIEM. The Chorus will sing *Brahms'* choral masterpiece: "*A German Requiem*" on Saturday evening, May 27, beginning at 7 p.m. in Bashford Auditorium. Mr. Vergil Bradfield of the P.U.M.C. has been coming to our campus weekly during the semester to accompany the chorus. Other items on this same program consist of three piano solos, three groups of songs by students, and one group by Mrs. Bliss Wiant. Every item is one of the choice selections from the great compositions of *Brahms*. The admission is free. On Monday evening, two days later, the same program will be given in Peking.

BUS SERVICE. At the close of the Faculty Discussion Group meeting last Tuesday evening, during which the bus service was discussed, it was suggested that for a period covering the next week or so a second bus be sent regularly to the city to meet the 6:00

o'clock appointment from the city. The Chairman of the Advisory Committee concurred in this suggestion at the time.

Subsequently the Controller made a more comprehensive study of the relevant facts, that is, the number of passengers brought from the city by the buses at 6:00 o'clock. The Monday-to-Friday statistics from April 24 to the present—a total of 17 days—were collected. These show that only twice during those 17 days did the number of passengers to be carried exceed 50, and only four times did the number exceed 40. On the basis of these facts, and of the mounting costs of operation, there does not seem to be justification for sending a second bus regularly to meet the 6:00 o'clock appointment. It should be noted that the bus of largest capacity is the one regularly used for this purpose.

The statistical facts may be consulted in the Controller's Office.

H.S.G.

PRESIDENT'S RETURN. The following telegram has come from President Stuart: "SS *Yusang*". This boat was due in Tangku yesterday and it is expected that the President will be here on the campus today.

Entrance Examination for Accredited Schools

May 20, 1939

Examination Stations	No. of Candidates		
	M.	W.	T.
Peking (at Bridgman)	52	27	79
Changli (at Hui Wen)	7	—	7
Tientsin (at T.A.C.C.)	32	13	45
Shanghai (at McTyeire)		5	5
	91	45	136

NOTE: Application blanks from Hongkong station have not yet arrived.

ALUMNI DAY PROGRAM

Saturday, May 27

Exhibitions	
9:00-12:00 a.m.	Biology Building Harvard-Yenching Institute Practice School (<i>In Sage</i>)
10:00-12:00 a.m.	Chemistry Building
10:00-11:30 a.m.	Home Economic Practice House Open
9:00-12:00 a.m. } 2:00-4:00 p.m. }	Library. Exhibits of student collectors' "hobbies" (In Miner Hall)
12:30 p.m.	Alumni Banquet—Second Dining Hall
10:00 a.m.-2:00 p.m.	Men's and Women's Student Dormitories Open
2:00-4:00 p.m.	<i>Athletic Program</i> Archery Contest May Pole Dance American Football (<i>Yenching vs. Fu Jen</i>)
4:00 p.m.	President's Reception—President's House
6:00 p.m.	Faculty Reception—Faculty Residences
7:00 p.m.	<i>Requiem</i> —Bashford Auditorium (See note)

*Material for this Bulletin should be sent IN WRITING
to the Office of the President before Wednesday noon of each week*

Faint, illegible text at the top of the page, possibly a header or introductory paragraph.

Second block of faint, illegible text.

Third block of faint, illegible text, appearing to be a list or table of contents.

Fourth block of faint, illegible text.

Fifth block of faint, illegible text.

Sixth block of faint, illegible text.

Seventh block of faint, illegible text at the bottom of the page.

YENCHING UNIVERSITY
Faculty Bulletin

(Issued by President's Office)

No. 38

May 27, 1939

Sunday, May 28

- 8:00 a.m. Sheng Kung Hui—Sage Chapel (In Chinese)
9:30 a.m. Campus Sunday School—Ninde Hall
9:30 a.m. Workmen's Service—Workmen's Social Centre
Leader: Miss Pien Wen-che
10:30 a.m. University Service—Ninde Chapel
Preacher: Dr. L. C. Porter
Subject: "Testifying to Life through Life"
6:30 p.m. English Vespers—Ninde Chapel
Preacher: Rev. S. Withers Green
Subject: "Endued with Power from on High"

Monday, May 29

Tuesday, May 30

- 8:55 a.m. Ninde Chapel—*Oxford Group*
Sage Chapel—Dr. L. C. Porter
8:00 p.m. Faculty Discussion Group—President's House
Speaker: Mr. George Taylor
Subject: "Recent Trip South"

Wednesday, May 31

- 8:55 a.m. Ninde Chapel—*Oxford Group*
Sage Chapel—Dr. L. C. Porter

Thursday, June 1

- 8:55 a.m. Ninde Chapel—*Oxford Group*
Sage Chapel—Dr. L. C. Porter

Friday, June 2

- 8:55 a.m. Ninde Chapel—*Oxford Group*
Sage Chapel—Dr. L. C. Porter
7:00 p.m. Joint Concert—Bashford Auditorium
University Orchestra and the Harmonica Band

Saturday, June 3

- 8:55 a.m. Ninde Chapel—Dr. T. C. Chao
Service for Prayer and Meditation

SPECIAL NOTES

ANTI-CHOLERA INOCULATIONS are to be given at the Men's Infirmary at the regular clinic hour beginning Monday, May 29.

SPECIAL CAR FOR PEITAIHO. It is proposed that if there are sufficient people desiring it, we shall endeavor to secure a chartered car for the trip to Peitaiho Beach the end of June. All those interested please register with Mr. Stephen Ts'ai, Controller, as soon as possible.

*Material for this Bulletin should be sent IN WRITING
to the Office of the President before Wednesday noon of each week*

YENCHING UNIVERSITY
Faculty Bulletin

(Issued by President's Office)

No. 39

JUNE
May 3, 1939

Sunday, June 4

- 8:00 a.m. Sheng Kung Hui—Sage Chapel (In Chinese)
9:30 a.m. Campus Sunday School—Ninde Hall
9:30 a.m. Workmen's Service—Workmen's Social Centre
Leader: Miss Liu K'e-hsin
10:30 a.m. University Service—Ninde Chapel
Preacher: Dr. T. C. Chao
Subject: "The Way of the Cross"
6:30 p.m. English Vespers—Ninde Chapel
Preacher: Dr. L. C. Porter
Subject: "Entrusted with the Message"

Monday, June 5

- 4:15 p.m. University Council Meeting—President's House
6:45 p.m. South Compound Supper—House 54 (See note)

Tuesday, June 6

- 8:55 a.m. Ninde Chapel—Dr. L. C. Porter
Sage Chapel—Oxford Group
No Faculty Discussion Group

Wednesday, June 7

- 8:55 a.m. Ninde Chapel—Dr. L. C. Porter
Sage Chapel—Oxford Group

Thursday, June 8

- 8:55 a.m. Ninde Chapel—Dr. L. C. Porter
Sage Chapel—Oxford Group

Friday, June 9

- 8:55 a.m. Ninde Chapel—Dr. L. C. Porter
Sage Chapel—Oxford Group
8:00 p.m. Farewell Reception for Faculty—President's House (see note)

Saturday, June 10

Spring Semester Examinations Begin

SPECIAL NOTES

SOUTH COMPOUND SUPPER. The last South Compound Supper will be held at House 54, on Monday, June 5, at 6:45 p.m. The hosts and hostesses will be Mr. and Mrs. K. A. Wee, Mr. and Mrs. H. S. Ch'i, and Mr. and Mrs. William Hung.

FAREWELL RECEPTION. A Farewell Reception will be held for members of the Faculty who are leaving or going on furlough, on Friday evening, June 9, at 8:00 o'clock at the President's House. All members of the faculty are cordially invited to be present.

SPECIAL SERVICE. There will be a special service on Sunday, June 4, at 10:30 a.m. in Ninde Chapel during which the Executive Committee of the Yenta Christian Fellowship will hand over its work to the new Executive Committee elected for 1939-1940.

BULLETIN NO. 1 OF THE FRIENDS CENTRE, SHANGHAI, has been received and gives interesting information about this timely project. It is on file in this office.

MR. AND MRS. T. C. CHAO deeply appreciate the kindness of their friends who wish them godspeed by giving them dinners. They regret that on account of Mr. Chao's weakness (indigestion etc.) they have to request their friends to refrain from expressing their very great kindness in this way.

*Material for this Bulletin should be sent IN WRITING
to the Office of the President before Wednesday noon of each week*

Calendar Forecast

Friday, June 9

8:00 p.m. Farewell Reception for Faculty President's House

Friday, June 16

7:30 p.m. Women's College Senior Banquet -Gamble Hall

Sunday, June 18

10:00 a.m. Baccalaureate Service—Ninde Hall

Monday, June 19

2:00 p.m. Rehearsal for Academic Procession—Bashford Auditorium

4:00 p.m. President's Farewell Reception for Graduating Class

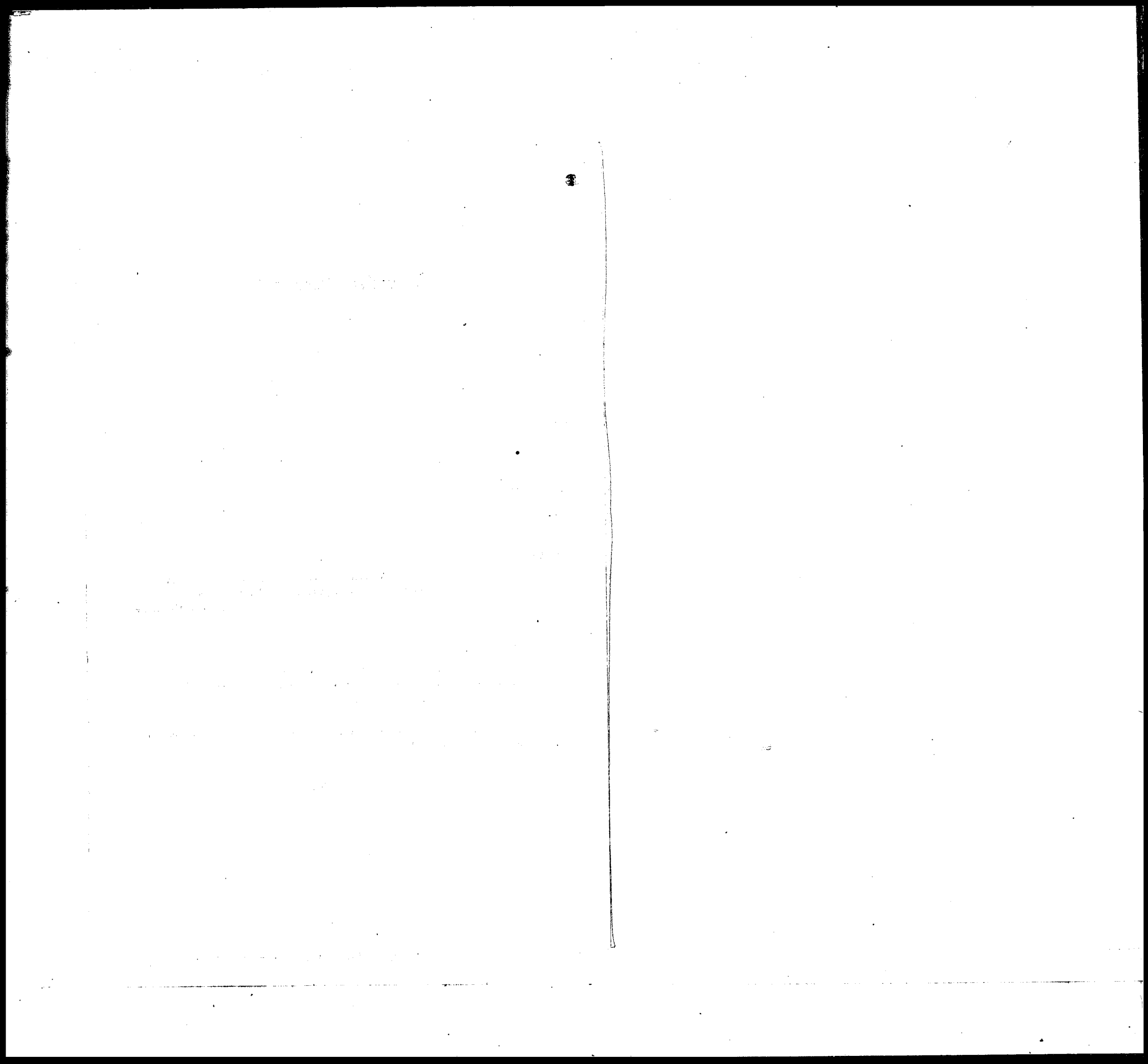
—President's House

Tuesday, June 20

10:00 a.m. Commencement—Bashford Auditorium

2:00 p.m. Annual Meeting of Board of Managers—President's House

(If any general events have not been scheduled above, kindly notify this office for insertion next week)



YENCHING UNIVERSITY
Faculty Bulletin

(Issued by President's Office)

No. 40

June 10, 1939

Sunday, June 11

- 8:00 a.m. Sheng Kung Hui—Sage Chapel (In English)
9:30 a.m. Campus Sunday School *Closing Service*—Ninde Chapel
9:30 a.m. Workmen's Service—Workmen's Social Centre
Leader: Mr. Hsi Chen-te
10:30 a.m. University Service—Ninde Chapel
Preacher: Dr. J. F. Li
Subject: "The Fountain of Living Waters"
6:30 p.m. English Vespers—Ninde Chapel
Preacher: Dr. J. L. Stuart

Monday, June 12

Tuesday, June 13

Wednesday, June 14

Thursday, June 15

Friday, June 16

- 7:30 p.m. Women's College Senior Banquet—Gamble Hall

Saturday, June 17

Calendar Forecast

Sunday, June 18

- 10:00 a.m. Baccalaureate Service—Ninde Hall

Monday, June 19

- 9:00 a.m. School of Religion Commencement—Ninde Chapel
11:00 a.m. University Council—President's House
2:00 p.m. Rehearsal for Academic Procession—Bashford Auditorium
4:00 p.m. President's Farewell Reception for Graduating Class
—President's House
8:00 p.m. Concert by Students—Bashford Auditorium

Tuesday, June 20

- 10:00 a.m. Commencement—Bashford Auditorium
2:00 p.m. Annual Meeting of Board of Managers—President's House

(If any general events have not been scheduled above, kindly notify this office)

SPECIAL NOTES

MR. AND MRS. RUSH. A cable has been received from the Associated Boards of the Christian Colleges of China inviting Mr. Arthur Rush to continue his effective promotional work in America, thus confirming previous correspondence on the subject. In the departure of these friends from our own community we shall at least have the satisfaction of knowing they are continuing to work with and for us in one of the most essential aspects of University welfare.

SERVANTS RECOMMENDED. Mrs. George Taylor has a very good amah, a cook, and a boy whom she wishes to recommend for positions.

FERTILIZER FOR SALE. On and after June 19 there will be some fertilizer on sale at the Compost Research Station. This material is safe to use and has very little odor. Please see Mr. Li Chih Kuang at the Compost Station near the Tannery.

REPORT OF THE UNIVERSITY LECTURES COMMITTEE

1938-39

The following lectures were given under the auspices of the above committee:

	<i>Speaker</i>	<i>Subject</i>
October 11:	Dr. E. Munch Copenhagen, Denmark	"The Danish Economic Situation as affected by the Present World Crisis"
November 17:	Mr. Sheldon Ridge	"When the West came to the East"
November 23	Prof. H.F. MacNair	"China and Japan: a Conflict of Cultures"
December 15	Florence Ayscough (Mrs. MacNair)	"The Shrine of a Chinese Poet" (Tu Fu)
**December 22	Mr. Kyat Tong	"Cycling, the Foundation of Motoring and Aviation"
February 23	Drs. Weidenreich and W.C. Pei	"The Upper Cave of Chou K'ou Tien"
March 9	Mr. Hugh Hubbard	"Bird Friends of North China"
May 4	Dr. G.H.R. Koenigs-Wald of Java	"The relationship between the fossil mammalian faunae of Java and China, with special reference to the problem of Early Man"
*May 24	Prof. William S. Ament of Scripps College	"Literature and the Present World Situation especially in America"

*This lecture was sponsored jointly by the University Lectures Committee and the Department of Western Languages

**This lecture was sponsored jointly by the University Lectures Committee and the department of Physical Education for Men

*Material for this Bulletin should be sent IN WRITING
to the President before Wednesday noon of each week*

YENCHING UNIVERSITY

Faculty Bulletin

(Issued by President's Office)

No. 41

June 17, 1939

Sunday, June 18

8:00 a.m. Sheng Kung Hui—Sage Chapel (In Chinese)

9:30 a.m. Workmen's Service—Workmen's Social Centre

Leader: Miss Ch'i Fan-yii

10:00 a.m. Baccalaureate Service—Ninde Chapel (*See note*)

No English Vespers

Monday, June 19

9:00 a.m. School of Religion Commencement—Ninde Chapel

11:00 a.m. University Council—President's House

2:00 p.m. Rehearsal for Academic Procession—Bashford Auditorium

4:00 p.m. President's Farewell Reception for Graduating Class—President's House

8:00 p.m. Concert by Students—Bashford Auditorium

Tuesday, June 20

10:00 a.m. Commencement—Bashford Auditorium

2:00 p.m. Annual Meeting of Board of Managers—President's House

SPECIAL NOTES

THE UNIVERSITY BACCALAUREATE SERVICE will be held on Sunday, June 18, at 10 a.m. in Ninde Chapel. All members of the University teaching and administrative staff and all members of the Graduating class are especially invited to attend. Please note the time *June 18, 10 a.m.*

FURLOUGH AND SUMMER ADDRESS. This is just a further reminder to members of the faculty and staff to kindly leave their *furlough and summer addresses* in the President's Office before going. This is very important for forwarding mail and for other communications.

SONGS OF PRAISE. Will those who have borrowed copies of this hymnbook, please return them to Ninde Hall.

THE LABORATORY REPORT OF YENCHING WATER AND MILK.

Artisan Well Water

1 c.c. gas nil
10 c.c. gas nil
1 c.c. Bact. '8
B. Coli negative

Dairy Milk

1 c.c. gas nil
10 c.c. gas nil
1 c.c. Bact. 36000
B. Coli negative

SERVANT RECOMMENDED. Mrs. S. D. Wilson wishes to recommend her cook for a position after September 1. He has served in this community exceptionally well for many years. He can do a variety of things.

*Material for this Bulletin should be sent IN WRITING
to the President before Wednesday noon of each week*

11

YENCHING UNIVERSITY

Faculty Bulletin

(Issued by President's Office)

No. 42

June 24, 1939

Sunday, June 25

9:30 a.m. Workmen's Service—Workmen's Social Centre
Leader: Mr. K. Y. Ma

9:30 a.m. University Service—Ninde Chapel (*See note*)
Conducted by the *Oxford Group*

SPECIAL NOTES

THE UNIVERSITY SERVICE during the summer will be at 9:30 a.m. instead of 10:30 a.m.

SUMMER OFFICE HOURS. From June 26 to August 25, the administrative offices will be open every morning, Monday to Friday inclusive, from 8:30 to 12. It is understood, however, that in addition, individual offices may have their own arrangements.

LIBRARY HOURS DURING SUMMER VACATION. From July 1 to August 31, the University Library will be open as follows:

June 21—30 except 25

8:00 a.m.—12:00 noon (with stack service)

1:30 p.m.—5:00 p.m.

7:00 p.m.—10:00 p.m.

July 1—August 31

Reading Hours

Monday—Friday

8:00 a.m.—12:00 noon

7:00 p.m.—9:00 p.m.

Saturday

8:00 a.m.—12:00 noon

Sunday

7:00 p.m.—9:30 p.m. (July 3—August 12)

Stack Service

Monday—Friday

8:00 a.m.—11:00 a.m.

BULLETIN. This will be the last issue of this *Bulletin* this session.

YENCHING UNIVERSITY
Faculty Bulletin

(Issued by President's Office)

No. 1

September 9, 1939

Sunday, September 10

9:30 a.m. Workmen's Service—Workmen's Social Centre
Leader: Mr. K. Y. Ma

10:00 a.m. University Service—Ninde Chapel
Preacher: President Stuart

2:00—5:15 p.m. Fellowship Workers Retreat—*Wu Chia Hwa Yuan* (See note)

Monday, September 11

7:30 p.m. Preessional Meeting—President's House

Tuesday, September 12

8:55 a.m. Ninde Chapel—Dr. J. F. Li
Sage Chapel—Dr. L. C. Porter

Wednesday, September 13

8:55 a.m. Ninde Chapel—Dr. J. F. Li
Sage Chapel—Dr. L. C. Porter

Thursday, September 14

8:55 a.m. Ninde Chapel—Dr. J. F. Li
Sage Chapel—Dr. L. C. Porter

4:20 p.m. University Assembly—Bashford Auditorium (See note)
Speaker: President Stuart

Friday, September 15

8:55 a.m. Ninde Chapel—Dr. J. F. Li
Sage Chapel—Dr. L. C. Porter

Saturday, September 16

SPECIAL NOTES

FELLOWSHIP WORKERS RETREAT. There will be a retreat for the workers of the Yenta Christian Fellowship on Sunday, September 10, from 2:00 to 5:15 p.m. at *Wu Chia Hwa Yuan*. Will the officers and those who wish to come please meet the group before two o'clock at the *west gate* to start for the place mentioned above by walking.

UNIVERSITY ASSEMBLY. The first University Assembly will be held on Thursday, September 14, 4:20 p.m. and will take the place of the Convocation with which, under more normal conditions, each new session has been begun. President Stuart will speak in English on the *Stimulus to Chinese Students from Recent International Developments*.

ENGLISH VESPERS SERVICE. The first English Vesper Service will be held on Sunday, September 17, at 6:30 p.m. at Ninde Hall. President Stuart will be the speaker.

MR. JOHN MCGREGOR GIBB. We regret to report the death of Mr. John McGregor Gibb, very suddenly at Peitaiho on August 30 of septic throat. Mr. Gibb was one of the representatives of the Methodist Mission at the time of the union of the two original institutions, and became director of the Construction Bureau when our present site was secured and building operations began. He continued in this position until the family removed to Shanghai in 1927. Most of what we now have in the physical plant and equipment we owe to his devoted and skilfull management. All of us who knew Mr. and Mrs. Gibb will sympathize with her and the children in this sad bereavement.

*Material for this Bulletin should be sent IN WRITING
to the President before Wednesday noon of each week*

YENCHING UNIVERSITY
Faculty Bulletin

(Issued by President's Office)

No. 2

September 16, 1939

Sunday, September 17

- 9:30 a.m. Campus Sunday School—Ninde Hall (*See note*)
9:30 a.m. Workmen's Service—Workmen's Social Centre
Leader: Mr. P'ang Chih-k'un
10:30 a.m. University Service—Ninde Chapel
Preacher: Dr. J. F. Li
Subject: "Break up the Fellowship Ground"
6:30 p.m. English Vesper Service—Ninde Hall
Preacher: President Stuart

Monday, September 18

- 4:15 p.m. University Council Meeting—President's House

Tuesday, September 19

- 8:55 a.m. Ninde Chapel—Dr. L. C. Porter
Sage Chapel—Dr. J. F. Li

Wednesday, September 20

- 8:55 a.m. Ninde Chapel—Dr. L. C. Porter
Sage Chapel—Dr. J. F. Li

Thursday, September 21

- 8:55 a.m. Ninde Chapel—Dr. L. C. Porter
Sage Chapel—Dr. J. F. Li
6:45 p.m. Chorus—Ninde Hall

Friday, September 22

- 8:55 a.m. Ninde Chapel—Dr. L. C. Porter
Sage Chapel—Dr. J. F. Li

Saturday, September 23 *Holiday for Summer Palace Outing* (*See note*)

SPECIAL NOTES

THE CAMPUS SUNDAY SCHOOL will resume its sessions this Sunday, September 17, at 9:30 in Ninde Hall. There are classes for all ages from Kindergarten through Junior Middle School, and all children, foreign and Chinese, are welcome.

There is need of pictures from magazines, old Christmas, Easter, birthday cards for use in the Sunday kindergarten. If you have any such to contribute will you leave them with the janitor of Ninde Hall, or telephone Mrs. Stephen Ts'ai.

ANNUAL SUMMER PALACE OUTING. The annual outing at the Summer Palace will take place on Saturday, September 23. Each student and faculty member will be given one ticket free of charge and those faculty members who have families are entitled to have two tickets, which may be obtained at the Student Life Committee Office in Bashford Hall within office hours on September 21 and 22. Additional tickets can be had at a small charge each in the Business Office.

P. U. M. C. SCHOLARSHIPS—One of our Yenching students, Chu Hung-chun, has won one of the two Trustees Scholarships which are awarded to the students with the highest standing in the entrance examinations. In addition to this honor, all three other Entrance Scholarships have been captured by Yenching students, Chu Hung-chun, Feng Chuan-i, and Su Yung-heng.

FACULTY TENNIS CLUB. Two regular tennis courts and one paddle tennis court have been set up in the faculty tennis grounds. The tennis fans and those who would like to try the newly introduced sport, please turn out.

*Material for this Bulletin should be sent IN WRITING
to the President before Wednesday noon of each week*

YENCHING UNIVERSITY
Faculty Bulletin

(Issued by President's Office)

No. 3

September 23, 1939

Sunday, September 24

- 8:00 a.m. Sheng Kung Hui—Sage Hall (In.Chinese)
9:30 a.m. Campus Sunday School—Ninde Hall
9:30 a.m. Workmen's Service—Workmen's Social Centre
Leader: Mr. Wei Yung-ch'ing
10:30 a.m. University Service—Ninde Hall (See note)
Preacher: Dr. J. F. Li
Subject: "Ye are the Body of Christ"
6:30 p.m. English Vesper Service—Ninde Hall
Preacher: L. C. Porter

Monday, September 25

- 4:10 p.m. Faculty Executive Committee Meeting—President's Office
6:00 p.m. Faculty Folk Dance Group—Boyd Gymnasium (See note)

Tuesday, September 26

- 8:55 a.m. Ninde Chapel—Dr. Stuart
Sage Chapel—Miss Speer
4:30 p.m. Faculty Tennis Club—Tennis courts
8:00 p.m. Faculty Discussion Group—President's House (See note)

Wednesday, September 27

- 8:55 a.m. Ninde Chapel—Dr. Stuart
Sage Chapel—Miss Speer

Thursday, September 28

- 8:55 a.m. Ninde Chapel—Dr. Stuart
Sage Chapel—Miss Speer
6:45 p.m. Chorus—Ninde Hall

Friday, September 29

- 8:55 a.m. Ninde Chapel—Joint Musical Service
7:00 p.m. Fellowship Social Meeting—Sage Hall (See note)

Saturday, September 30

Ninde and Sage Halls will be open for individual prayer for the nations
of the world. (See note)

SPECIAL NOTES

UNIVERSITY SERVICE. The annual service for the reception of new members into the Yenta Christian Fellowship will be held on Sunday, September 24, at 10:30 a.m. It is hoped that all new and as many of the old members as possible, will be able to attend this service of dedication.

FACULTY FOLK DANCING. The Faculty Folk Dance Group will meet on Monday, September 25, at 6:00 p.m., in the Boyd Gymnasium, under the direction of Miss Jacobs, who has many new and interesting dances. Everyone is cordially invited to join, no previous experience being necessary.

FACULTY TENNIS CLUB. The Faculty Tennis Club will hold its formal opening at 4:30 p.m. on Tuesday, September 26, on the tennis courts. This occasion will be used for the disposal of some business and the introduction of some new sports. A simple tea will be served after the playing, which is the main part of the afternoon's program. An invitation is specially extended to those who have been planning to join the club but who have been too busy to apply for membership.

FACULTY TUESDAY DISCUSSION GROUP. The faculty section of the Christian Fellowship will continue as hitherto to arrange for reports or discussions on timely topics under the general direction of Mr. R. C. Sailer. On the coming Tuesday evening, September 26, Miss Grace Boynton will give an account of her experiences in Kunming this summer. This will be followed by an account by Mr. Hollister of his trip through a large part of China. Everyone is invited.

FELLOWSHIP SOCIAL MEETING. There will be a social meeting for both new and old members of the Yenta Christian Fellowship on Friday, September 29, at 7:00 p.m. in Sage Hall. Faculty members both new and old, are cordially invited.

SATURDAY MORNING SERVICE. The Chapel Committee is planning a service in both Ninde and Sage Chapels for Saturday mornings which will continue the purpose of intercession for the nations which was carried out in a similar service last year. There will be no leader, but those who wish to meet in a common act of petition may gather at the Chapel hour for silent prayer. It is suggested that a theme for meditation be published in this Bulletin each week:

"Behold the nations are as a drop of a bucket, and are accounted as the small dust of the balance.....All nations are as nothing before Him: they are accounted by Him as less than nothing and vanity.....All flesh is grass, and all the goodness thereof is as the flower of the field. The grass withereth, the flower fadeth:....but the word of the Lord shall stand forever." Isaiah. 40.

MEN'S DINING-HALLS. It may be of interest to know that 209 men students eat regularly in the First Dining-hall, and 271 in the Second Dining-hall, making a total of 480. About 170 men students take their meals outside.

MILK TO BE BOILED. The medical officers urge that *milk* from the University Dairy be *boiled* as a general sanitary precaution.

GOOD SEW AMAH AVAILABLE ONE DAY A WEEK. An amah with long experience in mending, washing, and ironing in western homes is available one day per week. Please apply to Miss Kramer or Miss Hague.

YENCHING UNIVERSITY
Faculty Bulletin

(Issued by President's Office)

No. 4

September 30, 1939

Sunday, October 1

- 8 : 00 a.m. Sheng Kung Hui—Sage Hall (In English)
9 : 30 a.m. Campus Sunday School—Ninde Hall
9 : 30 a.m. Workmen's Service—Workmen's Social Centre
Leader : Mr. Chen Kuang-yu
10 : 30 a.m. University Service—Ninde Chapel
Preacher : Dr. Samuel L. S. Lee
Subject : "Hold fast that which is good."
6 : 30 p.m. English Vespers—Ninde Hall (*See note*)
Sermon : Prof. Halford Luccock
"The Seven Deadly Virtues"

Monday, October 2

Tuesday, October 3

- 8 : 55 a.m. Ninde Chapel—Miss M. B. Speer
Sage Chapel—Dr. J. L. Stuart
Faculty Discussion Group—(*See note*)

Wednesday, October 4

- 8 : 55 a.m. Ninde Chapel—Miss M. B. Speer
Sage Chapel—Dr. J. L. Stuart

Thursday, October 5

- 8 : 55 a.m. Ninde Chapel—Miss M. B. Speer
Sage Chapel—Dr. J. L. Stuart
6 : 45 p.m. Chorus—Ninde Hall

Friday, October 6

- 8 : 55 a.m. Ninde Chapel—*Joint musical service*

Saturday, October 7

- 8 : 55 a.m. Ninde and Sage Chapels will be open for individual prayer for the nations
of the world. (*See note*)

SPECIAL NOTES

ENGLISH VESPERS. From time to time this year, the Chaplain will read sermons by distinguished preachers. The first of such readings comes on Sunday. Professor Holford Luccock teaches homiletics at Yale Divinity School, and has notable ability in relating ancient texts to current conditions.

Suggestions regarding sermons to be read will be welcomed.

FACULTY DISCUSSION GROUP. The speaker at the Faculty Discussion Group on Tuesday, October 3, will be Miss Joy Homer who has been travelling through practically all of the unoccupied regions, representing one of the American China Relief agencies. Having listened to Miss Homer describe her observations and impressions, the one who has heard her feels confident that those who attend will not regret doing so, and will have a cheering experience.

CHRISTIAN FELLOWSHIP RETREAT. Will all members of the Fellowship please reserve Sunday, October 8, for a retreat of the whole Fellowship? There will be further notice of the details as place, time, and program, as soon as they are settled.

ANTI-CHOLERA INJECTION. All who are expecting to go to the city, please see that you get your injection at the Men's Infirmary, and a certificate for the same should be carried with you. This is required at the Hsi Chih Men gate for inspection.

THE LABORATORY REPORT OF YENCHING WATER AND MILK.

<i>Water</i>	gas 1 c.c. nil
	gas 10 cc. nil
	Bacteria 1 c.c. 26
	B. Coli negative
<i>Milk</i>	Gas 1 c.c. nil
	Gas 10 c.c. nil
	Bacteria 1 c.c. 228,000
	B. Coli negative

SAGE AND NINDE CHAPELS. Saturday, October 7, verse for meditation: "And a great and strong wind rent the mountains, and brake in pieces the rocks, . . . but the Lord was not in the wind; and after the wind an earthquake; but the Lord was not in the earthquake; and after the earthquake a fire; but the Lord was not in the fire; and after the fire a still small voice." *I Kings XIX, 11, 12.*

*Material for this Bulletin should be sent IN WRITING
to the President before Wednesday noon of each week*

YENCHING UNIVERSITY

Faculty Bulletin

(Issued by President's Office)

No. 5

October 7, 1939

Sunday, October 8

- 8:00 a.m. Sheng Kung Hui—Sage Hall (In Chinese)
9:30 a.m. Campus Sunday School—Ninde Hall
9:30 a.m. Workmen's Service—Workmen's Social Centre
Leader: Mr. Li En-kuang
10:00 a.m. Y.C.F. Retreat—*Wo Fo Ssu* (See note)
10:30 a.m. Y.C.F. Service—*Wo Fo Ssu*
Preacher: Mr. C. Y. Hsiao
Subject: "The Social Message of Jesus"
10:30 a.m. University Service—Ninde Chapel
Preacher: Dr. J. F. Li
Subject: "Glory in the Knowledge of the Lord"
English Vespers—*No Service this Sunday* (See note)

Monday, October 9

- 6:00 p.m. Faculty Folk Dancing—Boyd Gymnasium

Tuesday, October 10 *University Holiday* (See note)

Wednesday, October 11

- 8:55 a.m. Ninde Chapel—Dr. C. F. Wu
Sage Chapel—Dr. R. C. Sailer

Thursday, October 12

- 8:55 a.m. Ninde Chapel—Dr. C. F. Wu
Sage Chapel—Dr. R. C. Sailer
4:20 p.m. University Assembly—Bashford Auditorium
Student Debate
Subject: "Should the University Examination System be Abolished"
6:45 p.m. Chorus—Ninde Hall

Friday, October 13

- 8:55 a.m. Ninde Chapel—*Joint Musical Service*
4:30-6:00 p.m. Recreational Program—Boyd Gymnasium (See note)

Saturday, October 14

- 8:55 a.m. Ninde and Sage Chapels will be open for individual prayer and meditation
(See note)

SPECIAL NOTES

CHRISTIAN FELLOWSHIP RETREAT. A Fellowship Retreat will be held at *Wo Fo Ssu* on Sunday, October 8. The program will begin at 10 a.m. with the morning service at 10:30 a.m. at which Mr. C. Y. Hsiao will give the sermon. Immediately after the service a picnic will take place. In the afternoon there will be an address by Mr. R. B. Fulton on "The World Student Christian Movement and our Fellowship" with a discussion following. President Stuart will lead the final Devotions. There will also be the usual University Service in the morning in Ninde Chapel led by Dr. J. F. Li.

ENGLISH VESPERS. As the annual retreat of the Yenta Christian Fellowship is on Sunday, October 8, the Vesper service will be omitted.

UNIVERSITY HOLIDAY. The national anniversary, Tuesday, October 10, will be observed as a University holiday.

THE FRIDAY RECREATIONAL PROGRAM for October 13, from 4:30 to 6.00 p.m. will consist of Folk Dancing in the Boyd Gymnasium, under the direction of Miss Jacobs. All students and faculty are cordially invited to participate.

BASHFORD AUDITORIUM. The doors to Bashford Auditorium will be kept locked hereafter. Those who wish to use the Auditorium are asked to apply beforehand at the Business Office.

THE MUNICIPAL BUS has changed its route, so that it no longer passes by the Y.M.C.A. It goes from Tung Hua Men to Nan Chin Tze and out Chang An Chieh. Since several persons have wasted time waiting at Y.M.C.A. and missed engagements thereby, this notice is printed for the benefit of the community.

SAGE AND NINDE CHAPELS. Saturday, October 14, verse for meditation: "Hast thou not known? hast thou not heard, that the everlasting God, the Lord, the Creator of the ends of the earth, fainteth not, neither is weary? There is no searching of his understanding. He giveth power to the faint; and to them that have no might he increaseth strength.... They that wait upon the Lord shall renew their strength; they shall mount up with wings as eagles; they shall run, and not be weary, and they shall walk, and not faint." *Isaiah 40, 28-31.*

AT HOME. Mrs. Johnson of the American Embassy will be at home to her friends on Thursday afternoons from four to six. Members of the Yenching faculty are cordially invited.

*Material for this Bulletin should be sent IN WRITING
to the President before Wednesday noon of each week*

YENCHING UNIVERSITY
Faculty Bulletin

(Issued by President's Office)

No. 6

October 14, 1939

Sunday, October 15

8:00 a.m. Sheng Kung Hui—Sage Hall (In English)

9:30 a.m. Campus Sunday School—Ninde Hall

9:30 a.m. Workmen's Service—Workmen's Social Centre

Leader: Mr. Yang Wei-tung

10:30 a.m. University Service—Ninde Chapel

Preacher: Rev. A. H. Jowett Murray

Subject: "Christ and Human Need"

6:30 p.m. English Vespers—Ninde Hall

Preacher: Mr. R. Brank Fulton

Sermon: "The Sacredness of the Secular"

Monday, October 16

6:00 p.m. Faculty Folk Dancing—Boyd Gymnasium

Tuesday, October 17

8:55 a.m. Ninde Chapel—Dr. R. C. Sailer

Sage Chapel—Dr. C. F. Wu

Wednesday, October 18

8:55 a.m. Ninde Chapel—Dr. R. C. Sailer

Sage Chapel—Dr. C. F. Wu

Thursday, October 19

8:55 a.m. Ninde Chapel—Dr. R. C. Sailer

Sage Chapel—Dr. C. F. Wu

6:45 p.m. Chorus—Ninde Hall

Friday, October 20

8:55 a.m. Ninde Chapel—*Joint Musical Service*

Saturday, October 21

8:55 a.m. Ninde and Sage Chapels will be open for individual prayer and meditation

(See note)

SPECIAL NOTES

TELEPHONE RATES. The charge assessed by the City Telephone Administration for every extension from the University switchboard will be raised to from one dollar to two dollars per month, beginning December 1. This is in addition to the rental for the trunk lines to the city. The Controller's Office welcomes expression of opinion from subscribers regarding the two alternatives: 1 to raise the subscription rate by one dollar per month, or 2 to cut down the number of extensions by forming two-party lines.

REUTERS NEWS BULLETIN has been transferred to the room previously occupied by the Bookstore, Bashford 107, and the Bookstore has been transferred to the adjoining room, Room 109.

NINDE AND SAGE CHAPEL. Saturday October 14, verse for meditation: "The earth is the Lord's, and the fulness thereof; the world, and they that dwell therein. For he hath founded it upon the seas, and established it upon the floods. Who shall ascend into the hill of the Lord, or who shall stand in his holy place? He that hath clean hands, and a pure heart; who hath not lifted up his soul unto vanity, nor sworn deceitfully. He shall receive the blessing from the Lord, and righteousness from the God of his salvation." Psalm 24, 1-5.

*Material for this Bulletin should be sent IN WRITING
to the President's Office before Wednesday noon of each week*

YENCHING UNIVERSITY
Faculty Bulletin

(Issued by President's Office)

No. 7

October 21, 1939

Sunday, October 22

- 8:00 a.m. Sheng Kung Hui—Sage Hall (In Chinese)
9:30 a.m. Campus Sunday School—Ninde Hall
9:30 a.m. Workmen's Service—Workmen's Social Centre
Leader: Mr. Yang Shu-sheng
10:30 a.m. University Service—Ninde Chapel
Preacher: Rev. Hao Te-an
5:00 p.m. English Vespers—Ninde Hall (See note)
Preacher: Bishop Ralph A. Ward
7:00 p.m. Sheng Kung Hui Members Social Meeting—Residence of Mr. K. Y. Ma

Monday, October 23

- 6:00 p.m. Faculty Folk Dancing—Boyd Gymnasium
8:00 p.m. Lang Jun Yuan Meeting—Residence of Mr. and Mrs. Tsai (See note)

Tuesday, October 24

- 8:55 a.m. Ninde Chapel—Joint Musical Service
8:00 p.m. Faculty Discussion Group—President's House (See note)
Speaker: Mr. A. T. Steele

Wednesday, October 25

- 8:55 a.m. Ninde Chapel—Mr. Wu Lei-chuan (in Chinese)
Sage Chapel—Mr. Philippe de Vargas (in English)

Thursday, October 26

- 8:55 a.m. Ninde Chapel—Mr. Wu Lei-chuan (in Chinese)
Sage Chapel—Mr. Philippe de Vargas (in English)
4:15 p.m. University Lecture—McBrier 103 (See note)
Speaker: Dr. George Loehr
Subject: "Italy in the Present World Situation"
6:45 p.m. Chorus—Ninde Hall

Friday, October 27

- 8:55 a.m. Ninde Chapel—Mr. Wu Lei-chuan (in Chinese)
Sage Chapel—Mr. Philippe de Vargas (in English)
4:30 p.m. Play Day Program—Men's Athletic Field (See note)
Cotton Ball

Saturday, October 28

- 8:55 a.m. Ninde and Sage Chapels will be open for individual prayer and meditation
(See note)

SPECIAL NOTES

ENGLISH VESPERS. Bishop Ralph A. Ward, from Ch'engt'u, now in Peking to preside over the Annual Conference of the Methodist Church, will spend Sunday at Yen-ching. In order to make as full use as possible of Bishop Ward's presence both at Vespers and at evening conferences, the hour for Vespers is changed to 5:00 p.m. Bishop Ward is a vigorous and inspiring speaker always welcomed at Yen-ching.

LANG JUN YUAN MEETING. The next meeting of the residents of Lang Jun Yuan will be held on Monday, October 23, at 8:00 p.m. at the home of Mr. and Mrs. Tsai.

FACULTY DISCUSSION GROUP. We are fortunate in having Mr. A. T. Steele speak at the Discussion Group next Tuesday evening, October 24, at 8:00 p.m. at the President's House. Mr. Steele is usually spoken of as the ace of foreign correspondents in China. He will give his impressions of his recent trip to Japan.

UNIVERSITY LECTURE. The first of the University Lectures, open to all members of our community, will be given on Thursday, October 26, in McBrier 103, at 4:15 p.m. Dr. George Loehr, who is unusually well equipped to handle the subject under discussion, will lecture on "Italy in the Present World Situation".

FRIDAY PLAY DAY PROGRAM. On Friday, October 27, the game of *Cotton Ball* will be introduced to our Yen-ching Community. All faculty and staff members are invited to participate. The place is the Men's Athletic Field at 4:30 p.m. sharp.

F E C ADVANCE NOTICE. The next meeting of the Faculty Executive Committee will be held on Monday, October 30, at 4:15 p.m.

REPORT TO TRUSTEES. Dr. Stuart's latest report to the Trustees interpreting the present situation here is on file in this office and may be read by those interested.

COMMUNITY CHEST. Philanthropic organizations who desire financial aid for projects during the current year should submit requests, with budget and full information, to the chairman, Mrs. J. C. Li, before October 25.

BOOKS ON EXHIBITION. Professor R. Torii has kindly made a gift to the President of one set of annotated photographs and reproductions of his archaeological excavations of Liao Dynasty tombs in Inner Mongolia. These four beautifully illustrated volumes have great intrinsic value, and are also of interest to our community because they bear graphic evidence of the way in which the entire Torii family share in the scholarly attainments of their husband and father. He has also presented a complete set of prints by a well-known Japanese artist illustrating the famous Chinese novel *Shui Hu Chuan* and a few other themes, said to be of great value because it is almost the only complete set now extant. These are all on exhibition in the museum of the Harvard-Yen-ching Institute.

SAGE AND NINDE CHAPELS. Saturday, October 28, verse for meditation: "Thus saith the Lord; Let not the wise man glory in his wisdom, neither let the mighty man glory in his might; let not the rich man glory in his riches; but let him that glorieth glory in this, that he hath understanding, and knoweth me, that I am the Lord who exerciseth loving-kindness, justice, and righteousness in the earth; for in these things I delight, saith the Lord." *Jeremiah 9:23-24.*

FOUND. A pair of men's gloves was evidently left by mistake at House No. 59, South Compound, some time last spring. Owner may have the same upon identification.

YENCHING UNIVERSITY

Faculty Bulletin

(Issued by President's Office)

No. 8

October 28, 1939

Sunday, October 29

- 8:00 a.m. Sheng Kung Hui—Sage Hall (In English)
9:30 a.m. Campus Sunday School—Ninde Hall
9:30 a.m. Workmen's Service—Workmen's Social Centre
Leader: Mr. Han Kuang-yuan
10:30 a.m. University Service—Ninde Chapel
Preacher: Rev. A. H. Jowett Murray
Subject: "Christ and Human Need"
6:30 p.m. English Vespers—Ninde Hall (See note)
Preacher: Rev. Howard S. Galt
7:30 p.m. The World Christian Youth Conference—President's House (See note)
Speaker: Miss Tang Wen-shun (in Chinese)

Monday, October 30

- 4:15 p.m. Faculty Executive Committee Meeting—President's Office
6:00 p.m. Faculty Folk Dancing—Boyd Gymnasium

Tuesday, October 31

- 8:55 a.m. Ninde Chapel—Joint Musical Service
8:00 p.m. Faculty Discussion Group—President's House (See note)
Speaker: Bishop Ralph A. Ward
Subject: Current Political Trends in the United States"

Wednesday, November 1

- 8:55 a.m. Ninde Chapel (Joint Service)—Miss Tang Wen-shun

Thursday, November 2

- 8:55 a.m. Ninde Chapel (Joint Service)—Miss Tang Wen-shun
6:45 p.m. Chorus—Ninde Hall

Friday, November 3

- 8:55 a.m. Ninde Chapel (Joint Service)—Miss Tang Wen-shun
4:30 p.m. Play Day Program—Boyd and Warner Gymnasiums

Saturday, November 4

- 8:55 a.m. Ninde and Sage Chapels will be open for individual prayer and meditation
(See note)

SPECIAL NOTES

ENGLISH VESPERS. The hour for the English Vesper Service will remain at 6:30 until later on when a change will be made if a majority of the congregation so votes. Ballots on this question will be sent out early in November.

THE WORLD CHRISTIAN YOUTH CONFERENCE. Miss Tang Wen-shun, one of China's representatives at the World Christian Youth Conference in Amsterdam, Holland, this past summer, will give a report in Chinese on her impressions of the conference. This will be on Sunday, October 29, at 7:30 p.m. at the President's House. Faculty and students are cordially invited.

FACULTY DISCUSSION GROUP. Bishop Ralph A. Ward, who has just returned from the United States, will lead the Discussion Group on the general topic on "Current Political Trends in the United States."

FRIDAY PLAY DAY PROGRAM. It's about badminton time! All who are experts, all who are interested, and all who would like to know what the game is like—here is your grand chance. On Friday, November 3, at 4:30 p.m. you are invited to have a part in the badminton program. There will be no charge of any kind. Just come to either gymnasium where you will be welcome.

UNIVERSITY COUNCIL. The regular meeting of the University Council will be held on Monday, November 6, at 4:15 p.m. at the President's House.

THE FACULTY AND STUDENT DIRECTORY is in the process of distribution. If there are corrections, omissions, etc., kindly notify this office immediately.

STUDENTS. The Office of the Director of Studies wishes to report that the following students have left the University:

Withdrawn:

39106 Li Tseng-shen
W39027 Fu Shang-hsien
W39402 Hsiao Nung-hua

Granted Leave of Absence:

38049 Ch'en Shih-lu
W37027 Ch'ü En-pao

SAGE AND NINDE CHAPELS. Saturday, November 4, verse for meditation: "I therefore... beseech you to walk worthily of the calling wherewith ye were called, with all lowliness and meekness, with long suffering, forbearing one another in love; giving diligence to keep the unity of the Spirit in the bond of peace. There is one body, and one Spirit, even as also ye were called in one hope of your calling; one Lord, one faith, one baptism, one God and Father of all, who is over all, and through all, and in all."
Ephesians 4:1-6

*Material for this Bulletin should be sent IN WRITING
to the President's Office before Wednesday noon of each week*

YENCHING UNIVERSITY
Faculty Bulletin

(Issued by President's Office)

No. 9

November 4, 1939

Sunday, November 5

- 8:00 a.m. Sheng Kung Hui—Sage Hall (In Chinese)
9:30 a.m. Campus Sunday School—Ninde Hall
9:30 a.m. Workmen's Service—Workmen's Social Centre
Leader: Mr. Chang Lien-sheng
10:30 a.m. University Service—Ninde Chapel
Preacher: Dr. C. F. Wu
Subject: "The Meaning of Retreat"
6:30 p.m. English Vespers—Ninde Hall (See note)
Preacher: Dr. Elmer Leslie

Monday, November 6

- 4:15 p.m. University Council—President's House
6:00 p.m. Faculty Folk Dancing—Boyd Gymnasium

Tuesday, November 7

- 8:55 a.m. Ninde Chapel—*Joint Musical Service*
8:00 p.m. Faculty Discussion Group—President's House
Speaker: Mr. Sheldon Ridge
Subject: "Trends Leading England Into the War"

Wednesday, November 8

- 8:55 a.m. Ninde Chapel—Dr. Philippe de Vargas
Sage Chapel—Mr. Wu Lei-chuan

Thursday, November 9

- 8:55 a.m. Ninde Chapel—Dr. Philippe de Vargas
Sage Chapel—Mr. Wu Lei-chuan
4:20 p.m. University Assembly—Bashford Auditorium
Speaker: Dr. C. F. Wu
Subject: "Biology In Our Everyday Life"
6:45 p.m. Chorus—Ninde Hall

Friday, November 10

- 8:55 a.m. Ninde Chapel—Dr. Philippe de Vargas
Sage Chapel—Mr. Wu Lei-chuan
4:30 p.m. Play Day Program—Boyd Gymnasium (See note)

Saturday, November 11

- 8:55 a.m. Ninde and Sage Chapels will be open for individual prayer and meditation
(See note)

SPECIAL NOTES

ENGLISH VESPERS. Dr. Elmer Leslie, professor of Hebrew and Old Testament in the Boston University School of Theology, will be the preacher for the University Vespers Service on Sunday, November 5. It is our rare privilege to have a scholar of his ability lead us in worship and it is hoped that a good audience may be on hand to greet him.

FRIDAY PLAY DAY PROGRAM. Friday, November 10, is reserved for Folk Dancing. All faculty members and students are again invited to attend. This time it will be held in the Women's Gymnasium, beginning at 4:30 P. M. *sharp*.

THE COMMUNITY CHEST COMMITTEE takes great pleasure in announcing to the Community that the *Drive* is at an end with the most gratifying result. In round numbers, our receipts and pledges came close to \$5,700.00, which is about \$1,200 over our goal, which was set at \$4,500. The Committee and its collectors wish to take this chance to thank the community for its generosity and fine spirit of cooperation, which have made the collecting a great pleasure.

MISS DURRANT. We are glad to welcome Miss Edna Durrant to the Department of Western Languages. Because of local conditions she is temporarily unable to continue her work in her own station and has been generously assigned to Yenching for the present academic year. Kindly add her name to your copy of the *Directory*.

MR. LINDSAY. Word has been received that Mr. Michael Lindsay will sail from Hongkong on the first available steamer after his arrival there the end of last month.

STUDENTS. The Office of the Director of Studies wishes to report that the following students have left the University.

Granted Leave of Absence

37203 Tu Yang-ch'un

38181 Li Hsi-lan

SAGE AND NINDE CHAPELS. Saturday, November 11, verse for meditation: "where-with shall I come before the Lord, and bow myself before the high God? He hath showed thee, O man, what is good; and what doth the Lord require of thee, but to do justly, and to love kindness, and to walk humbly with thy God?" *Micah 5: 6,8.*

*Material for this Bulletin should be sent IN WRITING
to the President's Office before Wednesday noon of each week*

YENCHING UNIVERSITY
Faculty Bulletin

(Issued by President's Office)

No. 10

November 11, 1939

Sunday, November 12 *World Prayer Week* (*See note*)

- 8:00 a.m. Sheng Kung Hui—Sage Hall (In English)
- 9:30 a.m. Campus Sunday School—Ninde Hall
- 9:30 a.m. Workmen's Service—Workmen's Social Centre
Leader: Mr. Kao Yen
- 10:30 a.m. University Service—Ninde Chapel
Preacher: Miss Yuan Yung-chen
Subject: "Seek Ye First His Kingdom and His Righteousness"
- 6:30 p.m. English Vespers—Ninde Hall
Preacher: Mr. A.H. Jowett Murray

Monday, November 13

- 8:55 a.m. Ninde Chapel—*Joint Service*—Mr. Ho Wen-jen
- 6:00 p.m. Faculty Folk Dancing—Boyd Gymnasium

Tuesday, November 14

- 8:55 a.m. Ninde Chapel—*Joint Musical Service*
- 8:00 p.m. Faculty Discussion Group—President's House
Speaker: Mr. Norman Hanwell
Subject: "Some of the Economic Effects of Recent Developments"

Wednesday, November 15

- 8:55 a.m. Ninde Chapel—*Joint Service*—Miss Yang Min-ju

Thursday, November 16

- 8:55 a.m. Ninde Chapel—*Joint Service*—Mr. Ku Cheng-shu
- 6:45 p.m. Chorus—Ninde Hall

Friday, November 17

- 8:55 a.m. Ninde Chapel—*Joint Service*—Miss Wu Hsiu-kuei
- 4:30 p.m. Play Day Program—Men's Athletic Field (*See note*)

Saturday, November 18

- 8:55 a.m. Ninde Chapel—*Joint Service*—Mr. Chen Yung-ling

SPECIAL NOTES

WORLD PRAYER WEEK. The week of November 12-18 is being observed in many countries under the auspices of the International Y M C A and Y W C A, as World Prayer Week. Yen-ching will participate through its regular services, but with special emphasis on the nature, meaning, and significance of prayer. The leader on Sunday will be the principal of the Ch'ung Tz'u Girls' Middle School, Miss Yuan Yung-chen; and the weekday chapel services (*joint in Ninde Chapel*) will be lead by Yen-ching students.

FRIDAY PLAY DAY PROGRAM. Friday, November 17, is Bicycle Day. The Bicycle Club has an interesting program for us all. The place is the Men's Athletic Field at 4:30. If you can whistle—be sure to come.

CHANGE OF OFFICE ROOMS IN BASHFORD HALL. Please note the following changes in office rooms in Bashford Hall: Dean's Office of the College of Arts and Letters is temporarily moved to *Room 116*. Mr. Hsieh Ching-sheng is moved to the Chancellor's Office. A general rearrangement of the Director of Studies Office has also been made with Mr. Lin Chia-t'ung in *Room 132*, (enter by 129 a) Mr. Tien Hsing-chih in *Room 126*, Mr. Tai Ai-chen in *Room 130*, and Mr. Wang Pao-hsing in *Room 127*. The Reuters News bulletins are posted in *Room 125* formerly occupied by Mr. Tien Hsing-chih.

MISS PRESTON. We are glad to welcome Miss Clara Preston who will help in our medical clinics. Because of local conditions she is temporarily unable to continue her work in her own station and has been generously assigned to Yen-ching for the present academic year. Kindly add her name to your copy of the *Directory*.

FACULTY ADVISORY COMMITTEE OF THE WORKMEN'S SOCIAL CENTRE. A Committee composed of Mr. Tai Ai-chen, Mr. K. Y. Ma, and Miss Clara Preston will serve as a Faculty Advisory Committee of the Workmen's Social Centre. The Workmen's Committee for the *Centre* is composed of Messrs. Hsiao Tsai-shan, Chang Hsueh-hai, Li Shao-t'ing, and Pai Yü-ch'u. Suggestions regarding the *Centre* will be welcomed by either Committee.

COLLECTION OF WINTER CLOTHING. The week of November 13-18 has been set by the Social Service Committee of the Yenta Christian Fellowship as the time for collecting warm clothing for those in need in the neighboring communities. All contributions will be gratefully received. Please send them to the person nearest to you on the following committee.

East Compound	<i>Mrs. J. F. Li</i>
South Compound	<i>Miss A. Wagner</i>
Lang Yun Yuan	<i>Mrs. L. C. Cheng</i>
Wei Hsiu Yuan	<i>Mrs. C. S. Hsieh</i>
Tien Ho Ch'ang	<i>Miss M. Hayes</i>
Yen Shao Yuan	<i>Miss Li Jung-chen</i>
Haitien	<i>Mrs. C. P. Ts'ao</i>
Ch'eng Fu	

BACTERIOLOGICAL EXAMINATION OF MILK AND WATER, NOVEMBER 2, 1939;

Milk (Yen-ching Dairy) Gas	10 cc	090	Water Gas	10 cc	090
	1 cc	090		1 cc	099
Bacteria	1 cc	65000	Bacteria	1 cc	10
B. Coli		negative	B. Coli		negative

VERSE FOR WORLD PRAYER WEEK MEDITATION: "For I know the thoughts that I think toward you, saith the Lord, thoughts of peace, and not of evil. . . Then shall ye call upon me, and ye shall go and pray unto me, and I will hearken unto you. And ye shall seek me, and find me, when ye shall search for me with all your heart." *Jeremiah* 29:11-13.

YENCHING UNIVERSITY

Faculty Bulletin

(Issued by President's Office)

No. 11

November 18, 1939

Sunday, November 19

- 8:00 a.m. Sheng Kung Hui—Sage Hall (In Chinese)
9:30 a.m. Campus Sunday School—Ninde Hall
9:30 a.m. Workmen's Service—Workmen's Social Centre
Leader: Mr. Ch'en Yung-ling
10:30 a.m. University Service—Ninde Chapel
Preacher: Dr. J. F. Li
Subject: "A Spiritual Religion"
6:30 p.m. English Vespers—Ninde Hall
Preacher: Rev. E. C. Lobenstine
Subject: "Reflections on the American Thanksgiving Day"

Monday, November 20

- 6:00 p.m. Faculty Folk Dancing—Boyd Gymnasium

Tuesday, November 21

- 8:55 a.m. Ninde Chapel—*Joint Musical Service*

Wednesday, November 22

- 8:55 a.m. Ninde Chapel—Dr. Lin Chia-t'ung
Sage Chapel—Miss Tseng Hsiu-hsiang

Thursday, November 23

- 8:55 a.m. Ninde Chapel—Dr. Lin Chia-t'ung
Sage Chapel—Miss Tseng Hsiu-hsiang
4:15 p.m. University Lecture—McBrier 103 (*See note*)
Speaker: Mr. Sheldon Ridge
Subject: "Why is Great Britain Fighting in the European War?"
6:45 p.m. Chorus—Ninde Hall

Friday, November 24

- 8:55 a.m. Ninde Chapel—Dr. Lin Chia-t'ung
Sage Chapel—Miss Tseng Hsiu-hsiang
4:30 p.m. Play Day Program—In Front of Bashford Hall (*See note*)

Saturday, November 25

- 8:55 a.m. Ninde and Sage Chapels will be open for individual prayer and meditation (*See note*)

SPECIAL NOTES

UNIVERSITY LECTURE. Following the very interesting lecture given by Dr. George Loehr on Italy's position in relation to the present conflict in Europe, Mr. Sheldon Ridge will elaborate Great Britain's position. Mr. Ridge speaks very frankly and with humor, and the forthcoming lecture promises to be one of the best of our series. It is planned to follow Mr. Ridge's lecture with one throwing some light on the American position.

FRIDAY PLAY DAY PROGRAM. On Friday, November 24, there will be held the regular annual Inter-college Cross Country race. It will start at 4:45 p.m. in front of Bashford Hall. There may be a few short relay races scheduled for both men and women before the main event.

BADMINTON. The Boyd Gymnasium is open to the faculty for badminton every Wednesday and Friday evening from 6-7 p.m. Racquets are available and birds may be purchased at the desk.

NON-EXCHANGE OF CHRISTMAS CARDS. Suggestions have been made from this office in previous years that within the members of our own community there be no exchange of gifts or cards at the Christmas season. In view of the wide-spread distress this year it would seem especially fitting to devote to relief of those in need what we would enjoy spending in mutual remembrance. If this suggestion is accepted, we can all be sure that failure to give such expression to Christmas good wishes will be thoroughly understood by all concerned.

NINDE AND SAGE CHAPELS. Saturday, November 25, verse for meditation: "Is not this my chosen fast, the Lord, the Eternal asks, to loosen all that fetters men unfairly, and to relax its grip, to free poor debtors from their bonds, and break what binds them? It is to share your food with hungry men, and take the homeless to your home, to clothe the naked when you see them, and never turn from any fellow-creature.... Then shall light dawn for you, with healing for your wounds.... The Eternal will answer when you call, and when you cry, say 'Here am I' " *Isaiah 58:5-9*

*Material for this Bulletin should be sent IN WRITING
to the President's Office before Wednesday noon of each week*

YENCHING UNIVERSITY
Faculty Bulletin

(Issued by President's Office)

No. 12

November 25, 1939

Sunday, November 26

- 8:00 a.m. Sheng Kung Hui—Sage Hall (In English)
9:30 a.m. Campus Sunday School—Ninde Hall
9:30 a.m. Workmen's Service—Workmen's Social Centre
Leader: Mr. Cheng Ju-kang
10:30 a.m. University Service—Ninde Chapel (See note)
Musical Service
6:30 p.m. English Vespers—Ninde Hall
The Chaplain
7:00 p.m. Sheng Kung Hui Social Meeting—Home of Mr. and Mrs. Norman Li

Monday, November 27

- 4:10 p.m. Faculty Executive Committee Meeting—President's Office
6:00 p.m. Faculty Folk Dancing—Boyd Gymnasium
8:15 p.m. Piano Recital—Mrs. Trevor Bowen—Gamble Hall (See note)

Tuesday, November 28

- 8:55 a.m. Ninde Chapel—*Joint Musical Service*
8:00 p.m. Faculty Discussion Group—President's House (See note)

Wednesday, November 29

- 8:55 a.m. Ninde Chapel—Dr. Ph. de Vargas
Sage Chapel—Dr. Lin Chia-t'ung

Thursday, November 30

- 8:55 a.m. Ninde Chapel—Dr. Ph. de Vargas
Sage Chapel—Dr. Lin Chia-t'ung
6:45 p.m. Chorus—Ninde Hall

Friday, December 1

- 8:55 a.m. Ninde Chapel—Dr. Ph. de Vargas
Sage Chapel—Dr. Lin Chia-t'ung
Play Day Program (See note)

Saturday, December 2

- 8:55 a.m. Ninde and Sage Chapels will be open for individual prayer and meditation (See note)

SPECIAL NOTES

UNIVERSITY SERVICE. A special service of music in lieu of the regular morning worship will be held in Ninde Chapel this Sunday at 10:30 a.m., a service consisting entirely of responsive readings, prayers, and music. The choir will sing two anthems and there will be a solo and a quartette number. The subject of the service is: "The Good Shepherd". All are invited.

RECITALS. Mrs. Trevor Bowen, well-known pianist, has kindly offered to give music lovers of our campus a series of six recitals covering various periods in the development of pianistic music. Her first recital will deal with the early harpsichordists including *Rameau*, *Conperin* and others. Before the playing of each number explanatory remarks will be made so that those attending may more fully appreciate the music as presented. The first of this series will be given in Gamble Hall on Monday evening, November 27, at 8:15 p.m. The Music Department heartily welcomes all those who are truly interested in piano music, for these recitals are especially for those who are or wish to be intelligent in this field of music appreciation.

FACULTY DISCUSSION GROUP. Mr. Lindsay is expected back to speak at the Discussion on Tuesday evening at 8:00 p.m. in the President House. He will do so unless further notice is given.

FRIDAY PLAY-DAY PROGRAM. The last program for this semester will be held on December 1, in the evening. Provisions will be made for playing all kinds of table sports. There will be general games such as *Hearts*, *Dominoes*, *Lexicon*, *Monopoly*, and the last *Jig Saw Puzzles*, etc. There will be tournaments in the two Chinese Chess Games, *Wei Chi* and *Hsiang Chi*, American Chess, and Contract Bridge. In order to make advance plans, members of the faculty or students are requested to send their names to the office of either gymnasium as soon as possible. Be sure to state whether you will join in the general games or in a definite tournament. The hour and place for the game night will depend on the number of replies we will receive, and will be announced later.

DELIVERY OF LETTERS. In order to insure prompt delivery by our messengers of letters on the campus, it is requested that capital *O* or *H* be written in the upper right hand corner of the envelope, thus indicating whether the delivery is to be made to the office or the house of the addressee. If not marked, it may be delivered to either place.

BUS HOUR. It has been suggested to start the 6 p.m. bus from the city fifteen or thirty minutes later during week days to enable those who have engagements in the city a little more time to catch the bus. The management feels, under present conditions, the sooner and earlier we return to the campus the better. However, if the present schedule proves inconvenient to a sufficiently large group, the matter will be reconsidered. The Controller's Office welcomes expression of opinion from the community on the issue.

NINDE AND SAGE CHAPELS. Saturday, December 2, verse for meditation: "Brothers, you were called to be free; only, do not make your freedom an opening for the flesh, but serve one another in love. For the entire Law is summed up in one word, in 'You must love your neighbor as yourself' ". *Galatians* 5:13-14.

CLASSIFICATION OF FACULTY AND STAFF

INSTRUCTOR RANK AND ABOVE

November, 1939

	Men	Total	Women	Total	Totals
Professors					
American	8		4		
British	2				
Chinese	14				
Swiss	1				
	—	25	—	4	29
Asst. Professors					
American	2		2		
Chinese	11				
	—	13	—	2	15
Professors (part time)					
American	1	1			1
Visiting Professors					
Chinese	2				
Japanese	1				
	—	3			3
Tutor					
British	1	1			1
Asst. Tutor					
Chinese	1	1			1
Lecturers					
American	1		1		
Chinese	8				
	—	9	—	1	10
Lecturers (part time)					
American	1		3		
British	1				
Chinese	17		1		
German	1		2		
	—	20	—	6	26
Honorary Lecturers					
American	1		2		
Swiss			1		
	—	1	—	3	4
Visiting Lecturers (part time)					
British	1	1			1
Instructors					
American			1		
British			1		
Chinese	11		6		
	—	11	—	8	19
Advisers to Graduates					
Chinese	1	1			1
Administrative Officers and Staff Instructor Rank and Above					
American	1		3		
British			2		
Chinese	13		1		
German			1		
	—	14	—	7	21
Total		101		31	132

STATE OF CALIFORNIA

DEPARTMENT OF REVENUE

SALES TAX

DATE	DESCRIPTION	AMOUNT	TAX	TOTAL
1-1-78	SALES TAX	100.00	1.00	101.00
1-15-78	SALES TAX	200.00	2.00	202.00
2-1-78	SALES TAX	150.00	1.50	151.50
2-15-78	SALES TAX	300.00	3.00	303.00
3-1-78	SALES TAX	100.00	1.00	101.00
3-15-78	SALES TAX	250.00	2.50	252.50
4-1-78	SALES TAX	180.00	1.80	181.80
4-15-78	SALES TAX	350.00	3.50	353.50
5-1-78	SALES TAX	120.00	1.20	121.20
5-15-78	SALES TAX	280.00	2.80	282.80
6-1-78	SALES TAX	160.00	1.60	161.60
6-15-78	SALES TAX	320.00	3.20	323.20
7-1-78	SALES TAX	140.00	1.40	141.40
7-15-78	SALES TAX	290.00	2.90	292.90
8-1-78	SALES TAX	170.00	1.70	171.70
8-15-78	SALES TAX	330.00	3.30	333.30
9-1-78	SALES TAX	110.00	1.10	111.10
9-15-78	SALES TAX	260.00	2.60	262.60
10-1-78	SALES TAX	190.00	1.90	191.90
10-15-78	SALES TAX	340.00	3.40	343.40
11-1-78	SALES TAX	130.00	1.30	131.30
11-15-78	SALES TAX	270.00	2.70	272.70
12-1-78	SALES TAX	150.00	1.50	151.50
12-15-78	SALES TAX	310.00	3.10	313.10
TOTAL		4000.00	40.00	4040.00

STATE OF CALIFORNIA DEPARTMENT OF REVENUE

YENCHING UNIVERSITY

Faculty Bulletin

(Issued by President's Office)

No. 13

December 2, 1939

Sunday, December 3

- 8:00 a.m. Sheng Kung Hui—Sage Hall (In Chinese)
9:30 a.m. Campus Sunday School—Ninde Hall
9:30 a.m. Workmen's Service—Workmen's Social Centre
Leader: Mr. Nieh Hsi-en
10:30 a.m. University Service—Ninde Chapel
Preacher: Rev. K'ang Te-hsing
Subject: "A Spiritual Experience of Paul"
6:30 p.m. English Vespers—Ninde Chapel
The Chaplain
Subject: "As Many as Received Him"

Monday, December 4

- 4:10 p.m. University Council—President's House
6:00 p.m. Faculty Folk Dancing—Boyd Gymnasium

Tuesday, December 5

- 8:55 a.m. Ninde Chapel—*Joint Musical Service*
8:00 p.m. Faculty Discussion Group—President's House
Speaker: Mr. Michael Lindsay

Wednesday, December 6

- 8:55 a.m. Ninde Chapel—Mrs. L. E. Wolferz (*In Chinese*)
Sage Chapel—Mrs. Philippe de Vargas (*In English*)

Thursday, December 7

- 8:55 a.m. Ninde Chapel—Mrs. L. E. Wolferz (*In Chinese*)
Sage Chapel—Mrs. Philippe de Vargas (*In English*)
4:15 p.m. University Lecture—McBrier 103 (*See note*)
Speaker: Dr. Ernest H. Lindley
Subject: "Some Significant Trends in Contemporary American Life"
6:45 p.m. Chorus—Ninde Hall

Friday, December 8

- 8:55 a.m. Ninde Chapel—Mrs. L. E. Wolferz (*In Chinese*)
Sage Chapel—Mrs. Philippe de Vargas (*In English*)

Saturday, December 9

- 8:55 a.m. Ninde and Sage Chapels will be open for individual prayer and meditation (*See note*)

SPECIAL NOTES

UNIVERSITY LECTURE. The University Lecture on Thursday, December 7, will be given by Dr. Ernest H. Lindley, Vice-chairman of the Carnegie Foundation, Chancellor of the University of Kansas 1920-1939, and Former President of the Association of State Universities. His subject will be "Some Significant Trends in Contemporary American Life."

BUS FOR MOTHERS' CLUB. There will be a special bus for the use of those going to the meeting of the Mothers' Club-Parent Teachers' Association on Wednesday, December 6. Will those interested please communicate with Mrs. Sailer for further details.

STUDENTS. The Office of the Director of Studies wishes to report that the following students have left the University.

Granted Leave of Absence

39042 Chin P'ei-shih 39069 Hsing Tsung-chiang

WOMEN'S PHYSICAL EDUCATION DEMONSTRATION. There will be a demonstration of the work of the Physical Education Department for Women on December 27, at 8:00 p.m. in the Boyd Gymnasium. Free admission by ticket.

NEW TELEPHONE RATES. Sometime ago a notice was inserted in this Bulletin to the effect that the city telephone administration has increased the charge for each extension from our telephone switchboard from \$1.00 to \$2.00 per month. It was suggested that party lines might be formed in order to reduce the fee, and the expression of opinion of the subscribers was solicited. The Controller's Office, however, has received no response to this notice. The Administrative Committee at its last meeting decided to increase the telephone rates as follows beginning on December 1.

Office telephone	\$84.00 per year
Residence telephone	\$60.00 per year
Party line	\$36.00 per year

As these rates are net, no surcharge will be added to them.

CHRISTMAS CARDS. Please save your Christmas cards and give them to Mrs. Stephen Ts'ai who can use them in refugee work.

MISS RUTH STAHL. We are glad to welcome the return of Miss Ruth Stahl who is expected by the end of this week.

MR. VERNON NASH. Word has been received that Mr. Vernon Nash, formerly of our Department of Journalism, more recently active in the financial campaign of the Associated Christian Colleges of China, has reluctantly resigned in order to provide more adequately for his family responsibilities.

NINDE AND SAGE CHAPELS. Saturday, December 9, verse for meditation: "Let your love be a real thing, with a loathing for evil and a bent for what is good. Put affection into your love for the brotherhood: be forward to honor one another: never let your zeal flag: maintain the spiritual glow: serve the Lord: let your hope be a joy to you: be steadfast in trouble, attend to prayer, contribute to the needy saints, make a practice of hospitality. Bless those who make a practice of persecuting you: bless them instead of cursing them. Rejoice with those who rejoice, and weep with those who weep. Keep in harmony with one another: instead of being ambitious, associate with humble folk: never be self-conceited. Never pay back evil for evil to anyone; aim to be above reproach in the eyes of all; be at peace with all men, if possible, so far as that depends on you. Never revenge yourselves, beloved. . . Do not let evil get the better of you: get the better of evil by doing good." *Romans 12:9-19a, 21.*

CLASSIFICATION OF GRADUATES WORKING IN THE UNIVERSITY

ASSISTANT RANK AND ABOVE

November 28, 1939

	MEN	WOMEN	TOTAL
Professors	2		2
Asst. Professors	6		6
Lecturers	5	1	6
Lecturers (part time)	4	2	6
Instructors	10	5	15
Assistants	20	5	25
Administrative Officers and Staff			
Assistant Rank and Above	17	2	19
TOTALS	64	15	79

TENTATIVE CALENDAR FOR THE CHRISTMAS SEASON

If any events which are planned for any part of our community to help with the Christmas spirit of good will to all men, have been omitted from this calendar, please notify the President's Office, and the additional items will be added next week.

Sunday, December 17

2:00 p.m. Campus Sunday School Celebration—Ninde Hall
7:30 p.m. *Messiah* — Bashford Auditorium

Tuesday, December 19

8:30 p.m. *Messiah* — Peking Hotel

Friday, December 22

4:00 p.m. Yentung School Christmas Entertainment—President's House
8:00 p.m. Pageant — Bashford Auditorium

Saturday, December 23

2:00-4:00 p.m. Workmen's Entertainment — Bashford Auditorium

Sunday, December 24

CHRISTMAS EVE

9:30 a.m. Workmen's Service
10:30 a.m. Workmen's Bread Party
10:30 a.m. University Service and Baptism — Ninde Hall
4:45 p.m. Candlelight Service — Ninde Hall
8:00 p.m. Itinerant Carol Singers

Monday, December 25

FOUNDERS' DAY—CHRISTMAS DAY

8:00 a.m. Sheng Kung Hui—Communion Service
9:00 a.m. Sheng Kung Hui Breakfast — Dr. Brown's Residence
11:00 a.m. Carol Singing — Miner Hall
Dr. Stuart's Christmas Party for Faculty Children—
(Hour to be announced later) House President's
Faculty Houses Open to Students
(Details will be announced later)

Wednesday, December 27

8:00 p.m. Women's Physical Education Demonstration—
Boyd Gymnasium

1

1. The first part of the document discusses the importance of maintaining accurate records of all transactions. It emphasizes that this is essential for the proper management of the organization's finances and for ensuring compliance with applicable laws and regulations.

2. The second part of the document outlines the specific procedures that must be followed when recording transactions. This includes the requirement that all entries be supported by appropriate documentation, such as invoices, receipts, and contracts.

3. The third part of the document addresses the issue of internal controls. It states that a robust system of internal controls is necessary to prevent errors and fraud, and to ensure the integrity of the financial reporting process.

4. The fourth part of the document discusses the role of the audit committee in overseeing the financial reporting process. It notes that the audit committee is responsible for monitoring the effectiveness of the organization's internal controls and for reviewing the financial statements before they are presented to the board of directors.

5. The fifth part of the document provides a summary of the key points discussed in the previous sections. It reiterates the importance of accurate record-keeping, proper documentation, strong internal controls, and effective oversight by the audit committee.

6. The sixth part of the document concludes with a statement of the organization's commitment to transparency and accountability in its financial reporting. It expresses the organization's confidence in the accuracy and reliability of its financial statements and its willingness to undergo independent audits.

YENCHING UNIVERSITY
Faculty Bulletin

(Issued by President's Office)

No. 14

December 9, 1939

Sunday, December 10

- 8:00 a.m. Sheng Kung Hui—Sage Hall (*In English*)
9:30 a.m. Campus Sunday School—Ninde Hall
9:30 a.m. Workmen's Service—Workmen's Social Centre
Leader: Mr. Li Hsi-chih
10:30 a.m. University Service—Ninde Chapel
Preacher: Dr. J. F. Li
Subject: "An Ideal Man"
5:00 p.m. English Vespers—Ninde Chapel (*See note*)
The Chaplain

Monday, December 11

- 6:00 p.m. Faculty Folk Dancing—Boyd Gymnasium

Tuesday, December 12

- 8:55 a.m. Ninde Chapel—*Joint Musical Service*
Faculty Discussion Group Omitted (*See note*)

Wednesday, December 13

- 8:55 a.m. Ninde Chapel—Mrs. Philippe de Vargas (*In English*)
Sage Chapel—Mrs. L. E. Wolferz (*In Chinese*)

Thursday, December 14

- 8:55 a.m. Ninde Chapel—Mrs. Philippe de Vargas (*In English*)
Sage Chapel—Mrs. L. E. Wolferz (*In Chinese*)
4:20 p.m. University Assembly—Bashford Auditorium
Musical Program
6:45 p.m. Chorus—Ninde Hall

Friday, December 15

- 8:55 a.m. Ninde Chapel—Mrs. Philippe de Vargas (*In English*)
Sage Chapel—Mrs. L. E. Wolferz (*In Chinese*)
7:00 p.m. Sophomore Girls' Christmas Party—Boyd Gymnasium

Saturday, December 16

- 8:55 a.m. Ninde and Sage Chapels will be open for individual prayer and
meditation (*See note*)

SPECIAL NOTES

ENGLISH VESPERS. Please notice the change in time of the English Vespers—**5:00 p.m.**
FACULTY DISCUSSION GROUP. Because of the approach of Christmas, there will be no Faculty Discussion Group until further notice.

FACULTY AT HOME TO STUDENTS. Will faculty members who wish to be *At Home* to students on Christmas night, Monday, December 25, and have not already indicated this through other channels, kindly send their names to this office as soon as possible. Those who are planning to entertain students at *any other time* and wish to avoid duplication of invitations to them, may consult the list of students who are planning to be on the campus during the Christmas season. This list is now being prepared and will be on file in this office the latter part of next week.

DANCE AND MUSIC RECITAL. The Music Department presents Dorothea Hanwell in a Modern Dance program assisted by Miss E.T. Czech, Edle von Rechtensee and students of the Music Department on December 29, at 8:15 p.m. in Bashford Auditorium.

OLD MAGAZINES. A request has been made for discarded magazines or other illustrated material for student use in the nursery schools. If faculty members having such magazines will get in touch with Miss Kramer, she will arrange for collection.

NINDE AND SAGE CHAPELS. Saturday, December 16, verse for meditation: "For the sons of God are those who are guided by the Spirit of God. You have received no slavish spirit that would make you relapse into fear: you have received the Spirit of sonship. And when we cry "Abba! Father!", it is this Spirit testifying along with our own spirit that we are children of God: and if children, heirs as well, heirs of God, heirs along with Christ." *Romans 8:14-17a.*

TENTATIVE CALENDAR FOR THE CHRISTMAS SEASON

If any events which are planned for any part of our community to help with the Christmas spirit of good will to all men, have been omitted from this calendar, please notify the President's Office, and the additional items will be added next week.

- Sunday, December 17**
 2:00 p.m. Campus Sunday School Celebration—Ninde Hall
 7:30 p.m. *Messiah* — Bashford Auditorium
- Tuesday, December 19**
 8:30 p.m. *Messiah* — Peking Hotel
- Thursday, December 21**
 7:00 p.m. School of Religion Christmas Party—Ninde Hall
- Friday, December 22**
 4:00 p.m. Yentung School Christmas Entertainment—President's House
 8:00 p.m. Pageant — Bashford Auditorium
- Saturday, December 23**
 2:00-4:00 p.m. Workmen's Entertainment — Bashford Auditorium

Sunday, December 24 CHRISTMAS EVE

- 8:00 a.m. Sheng Kung Hui (*In English*)
 9:30 a.m. Workmen's Service
 10:30 a.m. Workmen's Bread Party
 10:30 a.m. University Service and Baptism — Ninde Hall
 2:00 p.m. Practice School Christmas Entertainment — Sage Hall
 4:45 p.m. Candlelight Service — Ninde Hall
 8:00 p.m. Itinerant Carol Singers

Monday, December 25 FOUNDERS' DAY—CHRISTMAS DAY

- 8:00 a.m. Sheng Kung Hui—Communion Service (*In Chinese*)
 9:00 a.m. Sheng Kung Hui Breakfast — Dr. Brown's Residence
 11:00 a.m. Carol Singing — Miner Hall
Faculty Executive Committee Meeting Omitted
 Dr. Stuart's Christmas Party for Faculty Children—
 (*Hour to be announced later*) President's House
 Faculty Houses Open to Students
 (*Details to be announced later*)

Wednesday, December 27

- 8:00 p.m. Women's Physical Education Demonstration—
 Boyd Gymnasium

Friday, December 29

- 8:15 p.m. Dance and Music Recital — Bashford Auditorium

PLANS FOR COMMUNITY RELIEF 1939-1940

The Committee on Community Relief was appointed by Dr. Stuart in late September on the eve of the Community Chest Campaign. The personnel of the committee and interests represented follow:

Mrs. William H. Adolph—Chairman
Mrs. L. E. Wolferz—Yenching Craft Kung Ch'ang
Mrs. Cheng Lin-chuang—Department of Sociology
Mrs. Harold Shadick—Learnmouth Memorial Fund
Miss Augusta Wagner—Department of Economics
Mrs. Ch'eng Ching-yu—Education
Pastor Ch'i Kwo-lung—Haitien Christian Church
Mr. Shih Sung-pei—University staff
Mr. Wei Yung-ching—Yenta Christian Fellowship

Immediately upon the close of the Community Chest Campaign, the Committee met to plan for the year's work. Mrs. J. C. Li, Chairman of the Community Chest, has reported a total of \$5,800 for relief. This year the Community Chest requested the Relief Committee to carry the entire responsibility of distributing the funds contributed, including action upon all requests from local organizations seeking aid from the Chest. The Committee has made a careful study of the organizations asking for help, has spent much time arranging the budget and has made plans for definite relief work in the university area for the present year. Following is the proposed budget, comprising the plans for 1939-1940.

Budgeted Expenditures

<i>Educational :</i>	Kindergarten (Chengfu)	\$ 250.00
	Aid for other village schools	200.00
	Yenching Craft kindergarten	30.00
<i>Medical :</i>	Haitien Maternity Clinic	600.00
	Chengfu Clinic (relief cases)	600.00
<i>Relief projects :</i>	Ricksha shelters (3)	55.00
	Unskilled labor (roads, etc.)	700.00
	General relief (fuel tickets, grain tickets, direct aid, clothing, etc.)	1460.00
	Loans (disbursements less loans repaid)	250.00
	Orphanage (Haitien)	1480.00
<i>Expenses Relief Center :</i>	Salaries	622.50
	Stationery and office supplies	85.00
	Rent, one year	180.32
	Fuel	50.00
<i>Contingent :</i>		280.13
	Total	\$6842.95

Budgeted Receipts

Balance on hand July 1, 1939	\$1042.95
Community Chest	5800.00
Total	\$6842.95

In past years the University kindly loaned a vacant residence in Chengfu as a central relief office. This year this property was not available, so the Relief Committee has arranged to rent a building as a center for its activities. This new Relief Office is situated directly north of the East Campus gate in Chengfu.

Mr. Hao Hwa-feng, the secretary, gives full time to the Committee's work, which includes office work, distribution of grain tickets, clothing, etc., as well as investigations in the homes. The program for relief will continue more or less along the line of last year's plans. Applicants for relief should visit the Relief Office for registration during the morning; each case will then be investigated, and methods of relief within the general policies and resources of the Committee will be given. Each individual application is carefully discussed and studied by the case committee before aid is granted. This comprises a large amount of painstaking work.

One of the fundamental purposes of the Relief Committee is to maintain this central headquarters, where all cases in need can be registered and studied rather than having individuals in the community distribute aid indiscriminately. The Committee hopes the community will cooperate on this point. Needy cases coming to your attention should be directed to the Relief Office, please, rather than to members of the Committee. The Committee will welcome helpful suggestions and criticisms as the work develops.

At the last Committee meeting, the sub-committee on case work reported many families in desperate straits, and in need of much more help than present funds will allow. These distressing conditions have been increased this year due to the floods during the early fall and to the acute rise in price of food, clothing, and fuel. Any suggestions as to sources of additional funds or further contributions will be welcomed.

YENCHING UNIVERSITY
Faculty Bulletin

(Issued by President's Office)

No. 15

December 16, 1939

Sunday, December 17

- 8:00 a.m. Sheng Kung Hui—Sage Hall (*In Chinese*)
9:30 a.m. Workmen's Service—Workmen's Social Centre
Leader: Mr. Li Chen
10:30 a.m. University Service—Ninde Chapel
Preacher: Dr. J. F. Li
Subject: "Jehovah has Anointed Me"
2:00 p.m. Campus Sunday School Celebration—Ninde Chapel
No English Vesper Service
7:30 p.m. *Messiah*—Bashford Auditorium (*See note*)

Monday, December 18

- 6:00 p.m. Faculty Folk Dancing—Boyd Gymnasium

Tuesday, December 19

- 8:55 a.m. Ninde Chapel—Joint Christmas Service
Christmas Music—Mrs. E. O. Wilson
8:30 p.m. *Messiah*—Peking Hotel

Wednesday, December 20

- 8:55 a.m. Ninde Chapel—Joint Christmas Service
Christmas Poetry and Carols—Mr. H. E. Shadick

Thursday, December 21

- 8:55 a.m. Ninde Chapel—Joint Christmas Service
Christmas Story and Carols—Miss Alice M. Boring
Meatless and Millet Lunch (*See note*)
4:15 p.m. University Lecture—McBrier 103 (*See note*)
Speaker: Mr. J. A. Hunter
Subject: "Native Methods of Raising Chicks"
7:00 p.m. School of Religion Christmas Party—Ninde Hall

Friday, December 22

- 8:55 a.m. Ninde Chapel—Joint Christmas Service
Christmas Music—Male Quartette
4:00 p.m. Yentung School Christmas Entertainment—President's House
4:00 p.m. Christmas Party for Village Children—Sage Hall
8:00 p.m. Pageant—Bashford Auditorium (*See note*)

Saturday, December 23

- 8:55 a.m. Ninde and Sage Chapels open for prayer and meditation (*See note*)
2:00 p.m. Practice School Christmas Entertainment—Sage Hall
2:00-4:00 p.m. Workmen's Entertainment—Bashford Auditorium

Sunday, December 24 CHRISTMAS EVE

- 8:00 a.m. Sheng Kung Hui—Sage Hall (*In English*)
9:30 a.m. Workmen's Service—Workmen's Social Centre
Leader: Mr. P'ang Chih-k'un
10:30 a.m. Workmen's Bread Party—Workmen's Social Centre
10:30 a.m. University Service and Baptism—Ninde Hall
Preacher: Dr. J. L. Stuart
1:00-3:00 p.m. Village Sunday School Celebration—Ninde Hall
4:45 p.m. Candlelight Service—Ninde Hall
No English Vesper Service
8:00 p.m. Itinerant Carol Singers

Monday, December 25 FOUNDERS' DAY—CHRISTMAS DAY

- 8:00 a.m. Sheng Kung Hui—*Communion Service*—Sage Hall (*In Chinese*)
9:00 a.m. Sheng Kung Hui Breakfast—Dr. Brown's Residence
11:00 a.m. Carol Singing—Miner Hall
3:30-6:00 p.m. Dr. Stuart's Christmas Party for Faculty Children—President's House
3:30-4:30 p.m. for younger children (See note)
4:30-6:00 p.m. for older children
7:30-9:30 p.m. Faculty Houses Open to Students—Faculty Houses (See list herewith)

Tuesday, December 26

- 7:00 p.m. Freshmen Students Christmas Party—Sage Hall

Wednesday, December 27

- 8:00 p.m. Women's Physical Education Demonstration—Boyd Gymnasium

Thursday, December 28

- 7:30-9:30 p.m. Students Christmas Entertainment—Bashford Auditorium (See note)

Friday, December 29

- 8:00 p.m. Graduation Recital of Miss Liu Chin-ting—Bashford Auditorium
Dance and Music Recital Postponed

SPECIAL NOTES

MESSIAH. The annual concert of Handel's MESSIAH will be given in the Auditorium on Sunday evening, December 17, at 7:30 o'clock. This concert is in lieu of the regular Vesper Service. The chorus consists of nearly two hundred members including the accompanist, Mr. Vergil Bradfield; the soloists, Mrs. Bliss Wiant and Miss Ch'i Yü Chen, *soprano*; Mr. Liu Chün Feng, *tenor*; and Mr. Ch'i Nai Ch'ün, *bass*. The alto solos are being omitted this year. An offering for the poor will be taken during the concert. Due to the limited capacity of the Auditorium only students, faculty, and staff members and their wives are invited. Children over 12 should be accompanied by their parents.

MEATLESS AND MILLET LUNCH. As previously announced, for the convenience of those who wish to participate in a meatless and millet lunch on Thursday, December 21, boxes will be put at the following places for contributions from two to six o'clock that afternoon: East Gate, South Gate, North Gate, and Miner Hall. The funds thus saved will be used to provide an especially good meal on Christmas Day for the children in the three orphanages of our neighborhood.

UNIVERSITY LECTURE. The last lecture for the semester on Thursday, December 21, at 4:15 p.m. in McBrier 103, will be in the realm of the Natural Sciences. Mr. Hunter of Tungchow, who knows more about raising chickens scientifically than anyone else in North China, cannot beat the native Chinese farmer who can still hatch more chicks than even the best modern electrical incubator process. Mr. Hunter will tell the story of his experiments and observations and will illustrate his lecture with models and lantern slides.

CHRISTMAS PAGEANT. On Friday evening, December 22, at 8:00 in Bashford Hall, "From Dark to Dawn", a Christmas pageant, will be presented by Yenta Christian Fellowship students. Miss Yin Hsiang will be in charge. It has been suggested that those who plan to attend should *bring presents of some kind—money, food, toys, etc.*—for the members of the nearby flood-refugee camp. The camp contains many children and adults, and this plan will enable us to make Christmas a happier occasion for them.

THE PRESIDENT'S CHRISTMAS PARTY FOR FACULTY CHILDREN. Following his usual custom, Dr. Stuart is inviting all the children of the faculty and staff to a party at his house on *Monday afternoon*, December 25. The children will be divided into two groups, the *Nursery School, Kindergarten, First and Second Grades* arriving at 3:30 *promptly*, at which time their entertainment will begin. They will be expected to be taken home at 4:30, when the older children (from *Third Grade on*) will be assembling for their party. Parents are not invited owing to lack of space, and if amahs are sent with younger children, they are asked to leave their charges at the door and call for them again at 4:30. Last year the party was very successful owing to the splendid cooperation of the parents, and this year again parents are asked to help in seeing that their children arrive at the right hours. Only children who receive personal invitations from Dr. Stuart are expected to attend the party. If any children of the faculty and staff fail to receive a personal invitation before next Tuesday, please notify the President's Office and one will be sent.

STUDENTS CHRISTMAS ENTERTAINMENT. The Yenta Spoken Dramatic Club will present two plays, one in English and the other in Chinese, on ~~Saturday~~ Saturday, December 28, at 7:30 p.m. in Bashford Auditorium. Admisson is free, and all are invited.

STUDENTS LISTS. Those who are planning to entertain students at any other time than at the *At home* on Christmas night may wish to avoid duplication of invitations to them by consulting the Student Lists which are now on file in this office.

DEANS COMMITTEE TO ACT AS ADMISSIONS COMMITTEE. The President has requested the Deans Committee to function as the Admissions Committee in preparation for the coming session.

NINDE AND SAGE CHAPELS. Saturday, December 23, Verse for meditation:—"The people that walked in darkness have seen a great light; they that dwelt in the land of the shadow of death, upon them hath the light shined... For unto us a child is born, unto us a son is given: and the government shall be upon his shoulder; and his name shall be called Wonderful, Counsellor, Mighty God, Everlasting Father, Prince of Peace." *Isaiah 9: 2, 6.*

FACULTY HOUSES OPEN TO STUDENTS. The following is a preliminary list of those who are planning to be *At Home* on Christmas evening, Monday, December 25, from 7:30 to 9:30. Additions or changes will be published next week. Will others who wish to be included kindly send their names to this office.

South Compound :

House 52

Mrs. Chou Kuo-hsien
Miss Liang Ssu-chuang
Miss Lu Hui-ch'ing
Miss Pai Ho I

House 53

Miss Martha Kramer
Miss Gertrude Jacobs

House 54

Mr. and Mrs. Wm. Hung

House 55

Mr. and Mrs. H. E. Shadick

House 56

Mr. and Mrs. S. H. Ch'i

House 57

Miss Margaret B. Speer
Miss Augusta Wagner
Miss H. H. Tseng

House 59

Mr. and Mrs. H. S. Galt

House 63

Mr. and Mrs. Bliss Wiant
Mr. and Mrs. Liu Mao-ling

House 65

Mr. and Mrs. Wm. Band
Mr. and Mrs. Ch'en Shang-yi
Mr. and Mrs. Ch'u Sheng-lin
Mr. Ch'eng Li-ch'ang
Mr. Mo Wen-ch'uan
Mr. and Mrs. Tu Lien-yueh

Lang Jan Yuan :

House 16

Mr. and Mrs. Henry H. C. Chou
Miss Doris Cummings
Miss Hilda Hague
Miss Clara Preston

House 11

Miss Alice M. Boring

House 12

Mr. and Mrs. E. O. Wilson
Mr. and Mrs. Norman Li
Mr. and Mrs. Theodore Ling

East Compound :

House 21

Mr. and Mrs. Lin Chia-t'ung
Mr. Tai Ai-chen
Mr. Tien Hsing-chih
Mr. Wang Pao-hing

House 22

Mr. George Loehr
Mme. Loehr
Miss Czech Edle von Rechtensee
Mr. Rudolph Lowenthal

House 31

Mr. and Mrs. C. F. Wu

House 34

Mr. and Mrs. J. F. Li
Mr. Wei Yung-ching
Mr. Brank Fulton

House 35

Mr. H. H. Liu

House 38

Mr. and Mrs. Jowett Murray

T'ung Fu :

8 Mr. and Mrs. Ouyang Hsiang
Mr. and Mrs. Tung Fan

T'ien Ho Ch'ang

5 Mr. and Mrs. R. C. Sailer

President's House

Dr. J. L. Stuart
Miss Grace M. Boynton
Mr. M. Lindsay
Mr. and Mrs. L. C. Porter

YENCHING UNIVERSITY

Faculty Bulletin

(Issued by President's Office)

No. 16

December 23, 1939

Sunday, December 24 CHRISTMAS EVE

- 8:00 a.m. Sheng Kung Hui—Sage Hall (*In English*)
- 9:30 a.m. Workmen's Service—Workmen's Social Centre
Leader: Mr. P'ang Chih-k'un
- 10:30 a.m. Workmen's Bread Party—Workmen's Social Centre
- 10:30 a.m. University Service and Baptism—Ninde Hall
Preacher: Dr. J. L. Stuart
- 1:00-3:00 p.m. Village Sunday School Celebration—Ninde Hall
- 4:45 p.m. Candlelight Service—Ninde Hall
No English Vesper Service
- 8:00 p.m. Itinerant Carol Singers

Monday, December 25 FOUNDERS' DAY—CHRISTMAS DAY

- 8:00 a.m. Sheng Kung Hui—Communion Service—Sage Hall (*In Chinese*)
- 9:00 a.m. Sheng Kung Hui Breakfast—Dr. Brown's Residence
- 10:00-11:00 a.m. Dr. Stuart at Home to Faculty—President's House (*See note*)
- 11:00 a.m. Carol Singing—Miner Hall
- 3:30-6:00 p.m. Dr. Stuart's Christmas Party for Faculty Children—President's House
3:30-4:30 p.m. for younger children (*See note*)
4:30-6:00 p.m. for older children
Faculty Folk Dancing omitted
- 7:30-9:30 p.m. Faculty Houses Open to Students—Faculty Houses (*See list herewith*)

Tuesday, December 26

- 8:55 a.m. Ninde Chapel—Joint Musical Service
- 7:00 p.m. Freshmen Students Christmas Party—Sage Hall

Wednesday, December 27

- 8:55 a.m. Ninde Chapel—Joint Service
Small Fellowship Group
- 8:00 p.m. Women's Physical Education Demonstration—Boyd Gymnasium
(*See note*)

Thursday, December 28

- 8:55 a.m. Ninde Chapel—Joint Service
Small Fellowship Group
- 4:15 p.m. Lecture by Professor Torii—President's House (*See note*)
- 7:00-9:30 p.m. Students Christmas Entertainment—Bashford Auditorium (*See note*)

Friday, December 29

- 8:55 a.m. Ninde Chapel—Joint Service
Small Fellowship Group
- 8:00 p.m. Graduation Recital of Miss Liu Chin-ting—Bashford Auditorium
(*See note page 4*)

Saturday, December 30

- 8:55 a.m. Ninde Chapel—Ninde and Sage Chapels open for prayer and meditation
(*See note*)

SPECIAL NOTES

DR. STUART AT HOME TO FACULTY. Dr. Stuart will be at home on Christmas Day, Monday, December 25, from 10:00 to 11:00 a.m. to welcome any members of the faculty who care to drop in at that time.

THE PRESIDENT'S CHRISTMAS PARTY FOR FACULTY CHILDREN. Following his usual custom, Dr. Stuart is inviting all the children of the faculty and staff to a party at his house on *Monday afternoon*, December 25. The children will be divided into two groups, the *Nursery School, Kindergarten, First and Second Grades* arriving at 3:30 *promptly*, at which time their entertainment will begin. They will be expected to be taken home at 4:30, when the older children (from *Third Grade on*) will be assembling for their party. Parents are not invited owing to lack of space, and if amahs are sent with younger children, they are asked to leave their charges at the door and call for them again at 4:30. Last year the party was very successful owing to the splendid cooperation of the parents, and this year again parents are asked to help in seeing that their children arrive at the right hours. Only children who receive personal invitations from Dr. Stuart are expected to attend the party.

WOMEN'S PHYSICAL EDUCATION DEMONSTRATION. The Department of Physical Education for Women will give a demonstration of indoor activities in an interesting program on Wednesday, December 27, at 8:00 p.m. in the Boyd Gymnasium. Members of the faculty are cordially invited and are requested to call for tickets at the Boyd Gymnasium before six o'clock on Wednesday, December 27. Admission is free, but by ticket-only.

LECTURE BY PROFESSOR TORII. Professor R. Torii has just returned from his most recent excavation which was concerned with a *Wei* Dynasty Temple in Inner Mongolia. He has kindly consented to give a lecture describing this undertaking, and will illustrate with lantern slides. There will also be moving pictures which he has taken of other trips. The lecture will be translated into English by Miss Torii. This will be on Thursday, December 28, at 4:15 p.m. at the President's House.

STUDENTS CHRISTMAS ENTERTAINMENT. The Yenta Spoken Dramatic Club will present two plays one in English and the other in Chinese, on Thursday, December 28, at 7:30 p.m. in Bashford Auditorium. Admission is free, and all are invited.

UNIVERSITY COUNCIL will not be held on Monday, January 1, but will meet on Monday, January 8, at 4:10 p.m. at the President's House.

VICTROLA RECORDS LOST. Two victrola records belonging to Miss Boring cannot be found: *Silent Night* sung by Schumann-Heinck, and *Noel*, sung by Journet. If anyone knows where they are, she would appreciate having them returned in time to use for Christmas.

NINDE AND SAGE CHAPELS. Saturday, December 30, verse for meditation: "Fear not: for, behold, I bring you good tidings of great joy, which shall be to all people. For unto you is born this day in the city of David a Saviour, who is Christ the Lord..... Glory to God in the highest, and on earth peace, good will toward men." *Luke 2:10-14*

FACULTY HOUSES OPEN TO STUDENTS. The following is a list of those who are planning to be *At Home* on Christmas evening, Monday, December 25, from 7:30 to 9:30.

South Compound:

House 52

Mrs. Chou Kuo-hsien
Miss Liang Ssu-chuang
Miss Lu Hui-ch'ing.
Miss Pai Ho I
Miss Martha Kramer

House 54

Mr. and Mrs. Wm. Hung
Mr. and Mrs. S. H. Ch'i

House 55

Mr. and Mrs. H. E. Shadick

House 57

Miss Margaret B. Speer
Miss Augusta Wagner
Miss H. H. Tseng

House 59

Mr. and Mrs. H. S. Galt

House 63

Mr. and Mrs. Bliss Wiant
Mr. and Mrs. Liu Mao-ling

House 65

Mr. and Mrs. Wm. Band
Mr. and Mrs. Ch'en Shang-yi
Mr. and Mrs. Ch'u Sheng-lin
Mr. Ch'eng Li-ch'ang
Mr. Mo Wen-ch'uan
Mr. and Mrs. Tu Lien-yueh

Lang Jan Yuan:

House 10

Mr. and Mrs. Henry H. C. Chou
Miss Hilda Hague
Miss Clara Preston

House 11

Miss Alice M. Boring
Mr. and Mrs. J. C. Li
Mr. and Mrs. Ts'ui Yu-lin
Mr. Lin Ch'ang-shan

House 16

Mr. and Mrs. E. O. Wilson
Mr. and Mrs. Norman Li
Mr. and Mrs. Theodore Ling

East Compound:

House 21

Mr. and Mrs. Lin Chia-t'ung
Mr. Tai Ai-chen
Mr. Tien Hsing-chih
Mr. Wang Pao-hsing

House 22

Mr. George Loehr
Mme. Loehr
Miss Czech Edle von Rechtensee
Mr. Rudolph Lowenthal

House 31

Mr. and Mrs. C. F. Wu

House 34

Mr. and Mrs. J. F. Li
Mr. Wei Yung-ch'ing
Mr. Brank Fulton

House 35

Mr. H. H. Liu

House 38

Mr. and Mrs. Jowett Murray

T'ung Fu:

8 Mr. and Mrs. Ouyang Hsiang
Mr. and Mrs. Tung Fan

T'ien Ho Ch'ang

5 Mr. and Mrs. R. C. Sailer
Mr. Lin Ch'i-wu
Mr. Shen Nai-chang

President's House

Dr. J. L. Stuart
Miss Grace M. Boynton
Mr. M. Lindsay
Mr. and Mrs. L. C. Porter

Gamble Hall

Miss Chou Kuo-p'ing
Miss Sun Tseng-min
Miss Yen Chih-an

GRADUATION RECITAL. The Department of Music cordially invites all members of the community to the graduation recital of Miss Liu Chin-ting on Friday, December 29, at 8 P.M. in Bashford Hall. An unusual number of more recent and contemporary items appear on her program especially in the last group. The very last number is a composition by Miss Liu herself and has an intimate relation to our campus in that the theme from which she has developed a series of variations is one which was chanted by workmen as they drove the piles into the ground in preparation for the installation of the two stone pillars in front of Bashford Hall. The complete program appears below:

PROGRAM

- J. S. BACH.....Fantasia in C Minor
 BEETHOVEN.....Sonata in E Major, Opus 109
 Vivace-ma non troppo
 Adagio espressivo
 Prestissimo
 LISZT.....Concert Study in D Flat, No. 3
 SCHUMANN.....Nachtstücke, Opus 23, No. 4
 MacDOWELL.....Concert Etude, Opus 36
 DEBUSSY.....Reflets dans l'eau
 RESPIGHI.....Notturmo
 FALLA.....Danza No. 1. from "La Vida Breve"
 LIU CHIN TING.....Theme and Variations

CLASSIFICATION OF STUDENTS BY PROVINCE AND COUNTRY

Fall, 1939

Province or country	Graduate Yuan		College						School of Religion		Total			
			Arts and Letters		Natural Sciences		Public Affairs							
	M	W	M	W	M	W	M	W	M	W	M	W	T	Per cent
Hopei	12	1	73	44	114	18	108	15	6	2	313	80	393	40.0
Chekiang	3		12	11	24	8	18	8			57	27	84	8.6
Kuangtung	8	1	10	15	14	9	19	1		1	51	27	78	8.0
Kiangsu	6		5	15	15	10	17	8			43	33	76	7.8
Shantung	6	2	13	11	12	7	13	4		4	44	28	72	7.3
Fukien	4		1	8	15	5	8	5	1	1	29	19	48	4.9
Liaoning	1		6	6	8	8	16	3			31	17	48	4.9
Anhui	2	1	8	6	9	3	15	3			34	13	47	4.8
Shansi	1		4	1	4	2	8	3	1		18	6	24	2.5
Hupei	1	1	3	2	2	1	5	3			11	7	18	1.8
Ssichuan	1		2	2	4	1	3	1			10	4	14	1.4
Hunan	1		1	2	2	3	2	1			6	6	12	1.2
Kiangsi			1	4	2	1	3				6	5	11	1.1
Kirin			1	3	4	1	2	1			7	4	11	1.1
Honan			2	1	1	1	2	2			5	4	9	.9
Chahar			1	1	1	1	3				5	2	7	.7
Kueichow			2	1	1	1	3				6	1	7	.7
Shensi			2	1		1	1				3	2	5	.5
Heilungkiang					2						2	2	4	.4
Kuangsi					1	1					1	1	2	.2
Yunnan					1		1				2		2	.2
Hsinkingiang				1								1	1	.1
Mengku								1				1	1	.1
Suiyuan					1						1		1	.1
China	46	6	147	135	237	80	247	59	8	8	685	288	973	99.1
America	1			1	1						2	1	3	.3
Russia			1		1						2		2	.2
Germany	1										1		1	.1
Lithuania				1								1	1	.1
Poland				1								1	1	.1
Rumania			1								1		1	.1
Total	48	6	149	138	239	80	247	59	8	8	691	291	982	100.0

CLASSIFICATION OF STUDENTS BY AGE
Fall, 1939

Age in years	Graduate Yüan		College						School of Religion		Total		
	M	W	Arts and Letters		Natural Sciences		Public Affairs		M	W	M	W	
			M	W	M	W	M	W					
16												1	1
17				4	5	3	2	1				7	8
18			6	15	35	9	4	4				45	28
19			17	28	52	23	13	11				82	62
20	1		27	32	58	26	38	17				124	75
21	1		25	18	31	6	47	13				104	37
22	4		31	15	27	5	54	5				116	25
23	3	2	12	10	14	5	39	3	1	1		69	21
24	9	2	19	6	12	1	26	4	1			67	13
25	12		5	2	4		13	1				30	13
26	3	1	1		1		8			4		17	6
27	7		1	6			1		2	1		11	7
28	4		1				2					7	2
29			2							1		2	1
30			1	1								1	1
31	1	1							1			2	1
32	2		1									3	1
33	1								1			2	2
34									1			1	
35										1		1	1
36				1								1	1
37													
38													
39									1			1	1
40													
Total	48	6	149	138	239	80	247	59	18	8	691	291	

YENCHING UNIVERSITY
Faculty Bulletin

(Issued by President's Office)

No. 17

December 30, 1939

Sunday, December 31

- 8:00 a.m. Sheng Kung Hui—Sage Hall (*In English*)
9:30 a.m. Workmen's Service—Workmen's Social Centre
Leader: Mr. K. Y. Ma
10:30 a.m. University Service—Ninde Chapel
Preacher: Dr. J. F. Li
Subject: "Get Thee Out"
5:00 p.m. English Vespers—Ninde Chapel
Preacher: The Chaplain
Subject: "And Experience Hope"

Monday, January 1, 1940 NEW YEAR HOLIDAY

- 9:30 a.m. New Year's Reception—President's House (*See note*)
Council postponed to January 8
No Faculty Folk Dancing

Tuesday, January 2 NEW YEAR HOLIDAY

Wednesday, January 3

- 8:55 a.m. Ninde Chapel—*Joint Service*—Mr. Wei Yung-ch'ing
8:00 p.m. Piano Recital—Mrs. Trevor Bowen—Gamble Hall (*See note*)

Thursday, January 4

- 8:55 a.m. Ninde Chapel—*Joint Service*—Mr. Wei Yung-ch'ing
4:20 p.m. University Assembly—Bashford Auditorium
Parliamentary Debate
Subject: "Resolved that the period for college education should be shortened"

Friday, January 5

- 8:55 a.m. Ninde Chapel—*Joint Service*—Mr. Wei Yung-ch'ing

Saturday, January 6

- 8:55 a.m. Ninde Chapel—Ninde and Sage Chapels open for prayer and Meditation
(*See note*)

SPECIAL NOTES

CABLED MESSAGE FROM NEW YORK. "Trustees, Friends, Associated Boards send staff, students Holiday Greetings, assurances continued loyalty".

NEW YEAR'S RECEPTION. The usual New Year's Reception will be held on Monday, New Year's Day, January 1, at 9:30 a.m. at the President's House. All members of the faculty and their families are cordially invited to come for this opportunity of "T'uan-pei" (團拜).

PIANO RECITAL. Mrs. Trevor Bowen will give the second recital of her series in which she illustrates the development of keyboard music. The first one dealt with the earliest harpsichord composers and their works. This one will illuminate the works of the great Johann Sebastian Bach whose compositions established the standard for his time and future generations. No one who heard Mrs. Bowen's first program will need any urging to attend this recital and those who did not attend the first one we strongly advise not to miss this one. The time is Wednesday, January 3, at 8 p.m. and the place is Gamble Hall. These lecture-recitals are free and open to all who wish to hear them.

LIBRARY HOURS. During New Year Holidays beginning from Sunday afternoon, December 31, 1939 to Tuesday, January 2, 1940 the library will be open as follows:

January 2 (*Tuesday*) 1940

2:00 - 5:00 p.m. (*without stack service*)

7:00 - 10:00 p.m. (*without stack service*)

STUDENTS. The Office of the Director of Studies wishes to report that the following students have left the University.

WITHDRAWN:

38173 Li Ch'eng Pao

39042 Chin P'ei Shih

39069 Hsing Tsung Chiang

RESULTS OF MILLET LUNCH SAVINGS. A total of \$280.82 was contributed from the millet lunch last week, one-half of which was given by students. This is very creditable. The Relief Committee has handled the fund as follows: The Haitien Orphanage was given \$45. (This is the same orphanage about which an article by Dr. Galt appeared in the Yenching News last week). \$150 is held in reserve for needy cases about us. In this connection, on inquiry by our Relief Committee, it was discovered that organizations in the city had also given money to the Refugee Camp, so that the Refugee Committee felt that it was better for our Committee to keep this amount in reserve for more needy cases about us, of which there are many. The remaining \$85.82 was given to Miss Laura Richards for the *Kung Te Ssu* Orphanage. There will be a further report of details next week.

NINDE AND SAGE CHAPELS. Saturday, January 6, verse for meditation: "Not that I have already obtained, or am already made perfect: but I press on, if so be that I may lay hold on that for which also I was laid hold on by Christ Jesus. Brethren, I count not myself yet to have laid hold: but one thing I do, for getting the things which are behind, and stretching forward to the things which are before, I press on toward the goal unto the prize of the high calling of God in Christ Jesus." *Philippians 3:12-14*

DISTRIBUTION OF STUDENTS ACCORDING TO OCCUPATION OF FATHERS

Occupation	Graduate Yuan		College						School of Religion		Total			
	M	W	Arts and Letters		Natural Sciences		Public Affairs		M	W	M	W	T	Per cent
			M	W	M	W	M	W						
Retired or unoccupied	13	4	51	52	86	27	60	30	2	3	212	116	328	33.4
Commerce	9		38	33	59	14	100	11	1	3	207	61	268	27.3
Education	9		15	18	20	8	14	6	1	1	59	33	92	9.4
Agriculture	5		16		19	1	21		2		63	1	64	6.5
Government Service	3		6	5	10	3	14				33	8	41	4.2
Medicine	2		3	7	11	8	6	4			22	19	41	4.2
Communication	1		1	2	12	3	13	1			27	6	33	3.3
Banking	2		2	6	1	6	5	3			10	15	25	2.6
Industry	1		4	5	5	3	4	2		1	14	11	25	2.6
Mission	2	1	5	5	3	1	2	1	1		13	8	21	2.1
Law			3	4	5	2	4	1	1		13	7	20	2.0
Engineering	1	1	2		6	3	3				12	4	16	1.6
Social Service			2		1						3		3	.3
Journalist				1	1	1					1	2	3	.3
Army and Police			1				1				2		2	.2
Total	48	6	149	138	239	80	247	59	8	8	691	291	982	100

The first part of the document discusses the general principles of the system, including the importance of maintaining accurate records and the need for a clear and concise reporting structure. It emphasizes the role of the system in ensuring the integrity and reliability of the data collected.

The second part of the document provides a detailed description of the system's components and their functions. This includes a list of the various modules and their interactions, as well as a discussion of the system's architecture and the underlying data models.

The third part of the document describes the implementation of the system, including the hardware and software requirements, the development process, and the testing procedures. It also discusses the deployment of the system and the ongoing maintenance and support requirements.

The fourth part of the document discusses the results of the system's use, including the benefits realized, the challenges encountered, and the lessons learned. It also provides a summary of the system's performance and a final assessment of its value.

The fifth part of the document provides a concluding summary of the system and its impact on the organization. It also includes a list of references and a list of authors.