

277 4396

UBCHEA ARCHIVES  
COLLEGE FILES  
RG 11

WCUU  
Administrative  
Maps

2

7

7

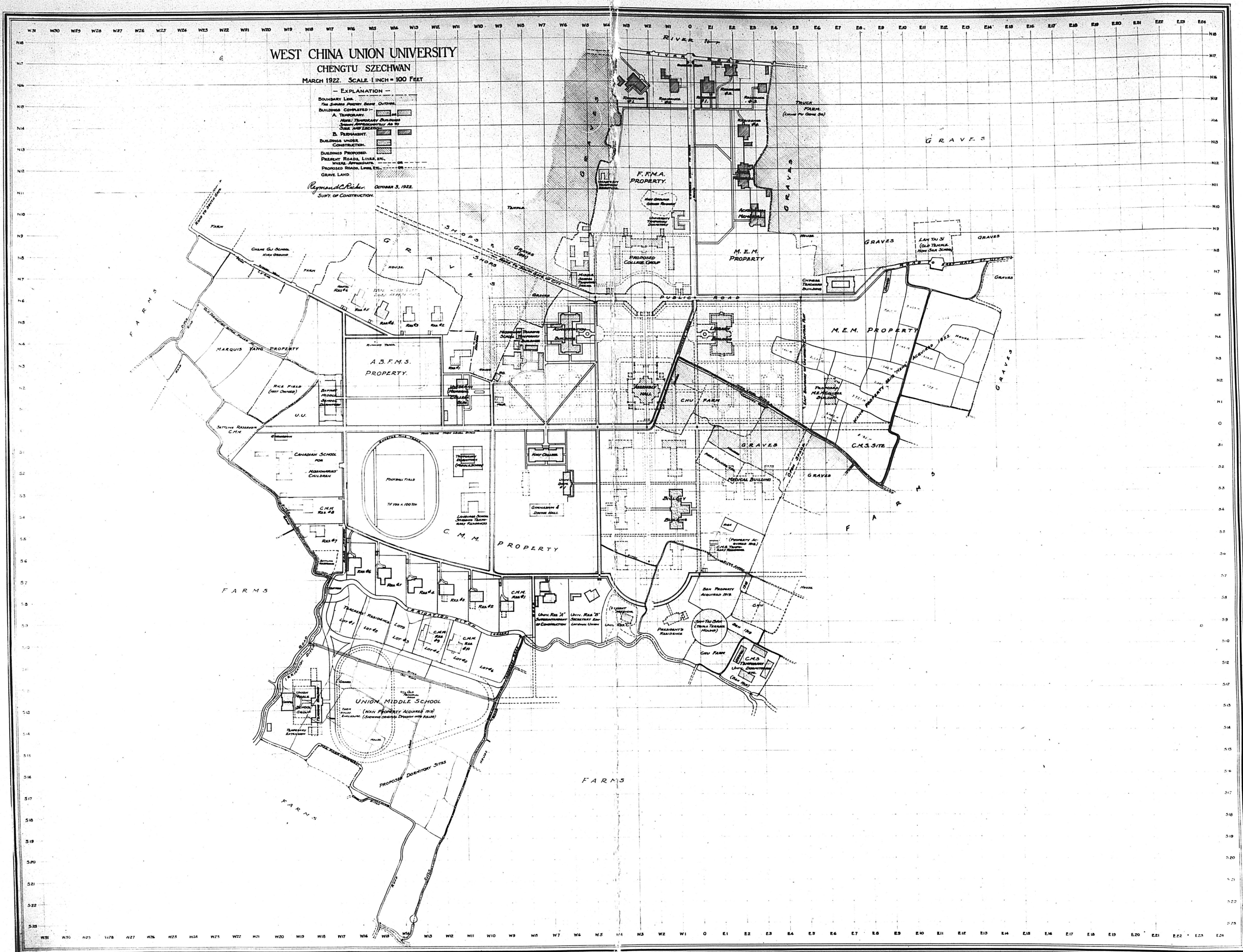
4

3

9

6

0325



0326

Map of Campus

2  
7  
7  
4  
3  
9  
6

0327

## THE WEST CHINA UNION THEOLOGICAL COLLEGE.

The West China Union Theological College was established in 1936 and admitted its first class in the autumn of 1937. Its first class consisted of four students and its present enrolment is 43. In the present student body there are representatives from ten provinces. It is the only institution of College grade training men and women for church work in West China. It serves a constituency of one hundred million people from an area which is one third of China. This is in harmony with the recommendation of the Committee on Theological Education in China led by Dean Weigle who stated that there should be one Theological College in West China. At the present time there are many Middle Schools in West China from which students may come to our college.

Five Missions and Churches are associated in the College. Two of the Missions are from England, two from the United States and one from Canada. It is associated with the West China Union University and its students are admitted to classes in the university when desired. It has its own Board of Management on the field but the University Board of Governors is also the Board of Governors of the College. The entrance requirement for the regular class is graduation from a Senior Middle School while a special class is admitted of those who have only graduation from a Junior Middle School. The College is building up a good staff and at present it is assisted by the Rural Church Department of the Nanking Theological Seminary.

The College needs new buildings. The work is being carried on in old buildings which are no longer sufficient or suitable. Land has been donated by one of the Missions and a layout of buildings has been drawn by a competent architect and accepted by the Board of Management. The buildings will be simple, of one storey, of brick construction and are laid out in an attractive style. It is estimated that gold \$25,000 would erect the plant. The buildings will be erected as funds are available. Exchange from gold to Chinese currency is now very favorable and this accounts for the low estimate of building costs in gold currency.

The first building required is a dormitory which should be built before the next college year. Residences for our Chinese staff are now urgently needed. Great care will be taken in the erection of the chapel so that a beautiful and worshipful building may be built. The library building and the dormitories are of uniform style. It is hoped that this plant may be completed within the next few years.

0328

2

7

7

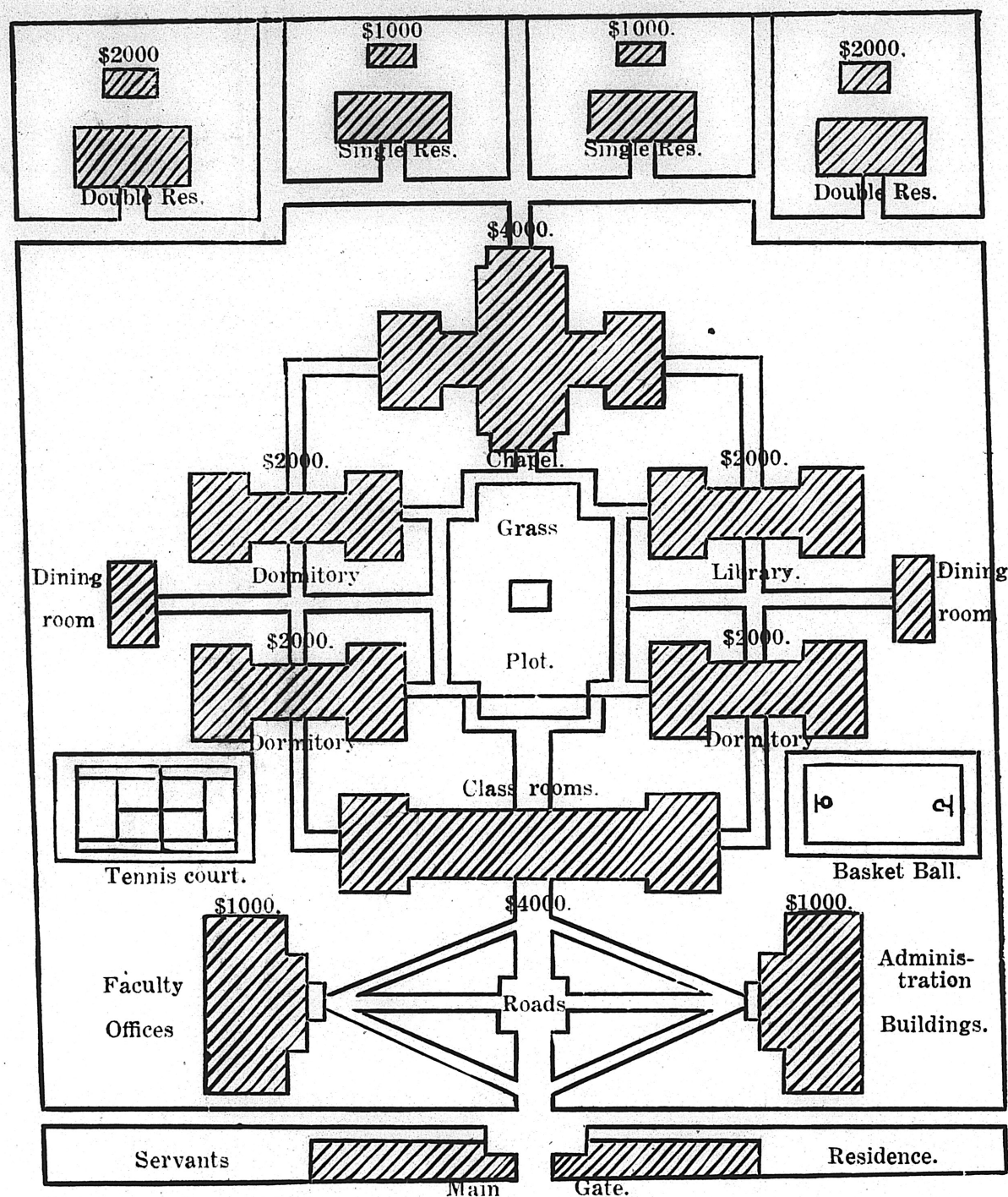
4

3

9

6

Layout of the proposed buildings of  
THE WEST CHINA UNION THEOLOGICAL COLLEGE



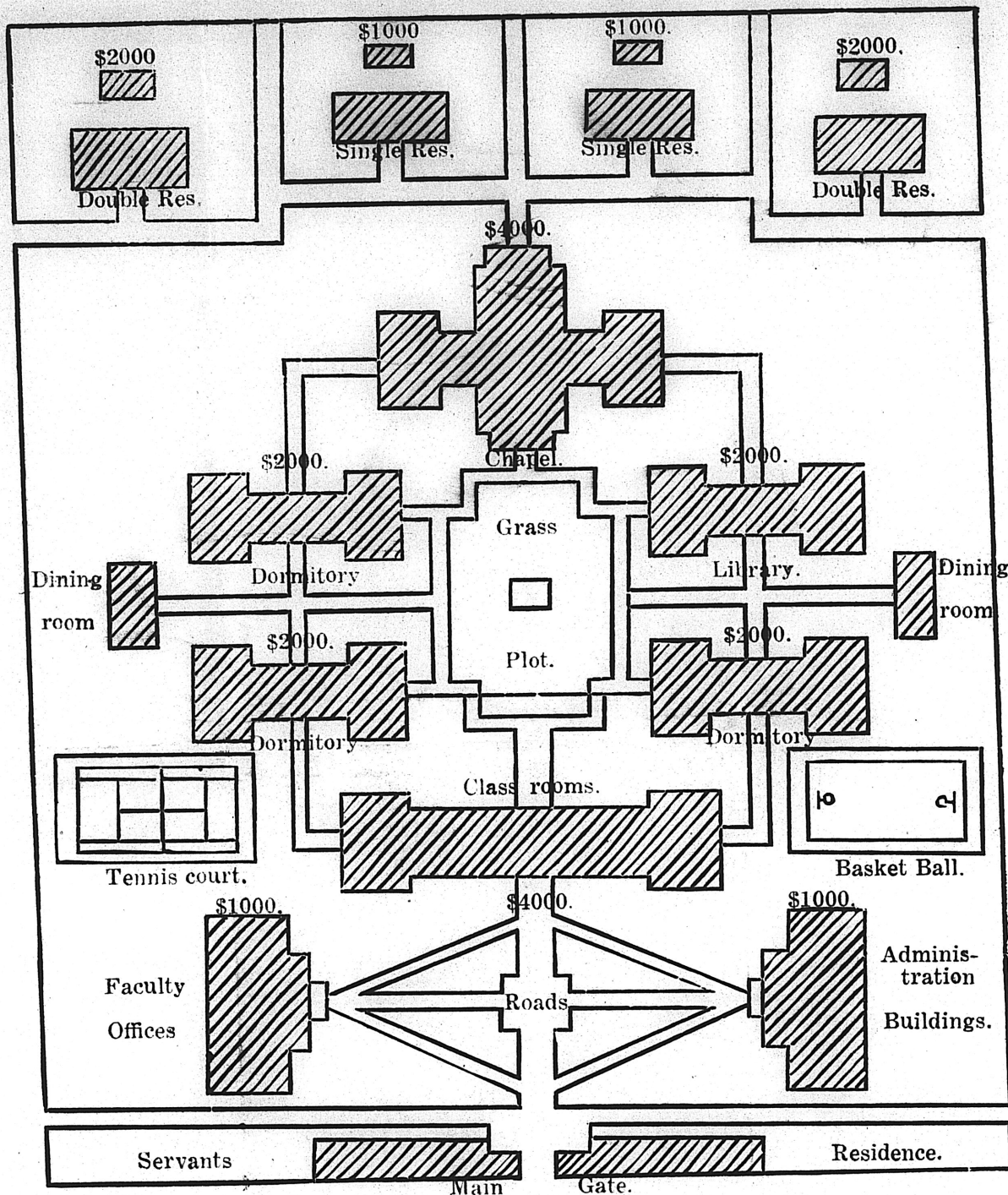
The above layout of buildings was drawn by Mr. Canning Young, architect of the West China Union University, and has been accepted by the College Board of Management.

The property contains about four English acres or 25 Chinese acres. The estimated cost of the buildings is as follows and prices are given in gold currency: Chapel \$4000, 3 dormitories each \$2000, Library \$2000, Class rooms \$4000, 2 single residences \$1000 each, 2 double residence \$2000 each, Faculty Office \$1000, Administration building \$1000. Preparing roads and grounds \$1000. Total \$25,000 Gold currency.

Buildings will be erected as funds are available.

Layout of the proposed buildings of  
THE WEST CHINA UNION THEOLOGICAL COLLEGE

*Rec'd attached  
letter for Wallace  
Yang dated  
2/20/40*



The above layout of buildings was drawn by Mr. Canning Young, architect of the West China Union University, and has been accepted by the College Board of Management.

The property contains about four English acres or 25 Chinese acres. The estimated cost of the buildings is as follows and prices are given in gold currency: Chapel \$4000, 3 dormitories each \$2000, Library \$2000, Class rooms \$4000, 2 single residences \$1000 each, 2 double residence \$2000 each, Faculty Office \$1000, Administration building \$1000. Preparing roads and grounds \$1000. Total \$25,000 Gold currency.

Buildings will be erected as funds are available.

0330

Rec'd  
attached to  
letter from  
Hallace May  
dated 2/20/40.

## THE WEST CHINA UNION THEOLOGICAL COLLEGE.

The West China Union Theological College was established in 1936 and admitted its first class in the autumn of 1937. Its first class consisted of four students and its present enrolment is 43. In the present student body there are representatives from ten provinces. It is the only institution of College grade training men and women for church work in West China. It serves a constituency of one hundred million people from an area which is one third of China. This is in harmony with the recommendation of the Committee on Theological Education in China led by Dean Weigle who stated that there should be one Theological College in West China. At the present time there are many Middle Schools in West China from which students may come to our college.

Five Missions and Churches are associated in the College. Two of the Missions are from England, two from the United States and one from Canada. It is associated with the West China Union University and its students are admitted to classes in the university when desired. It has its own Board of Management on the field but the University Board of Governors is also the Board of Governors of the College. The entrance requirement for the regular class is graduation from a Senior Middle School while a special class is admitted of those who have only graduation from a Junior Middle School. The College is building up a good staff and at present it is assisted by the Rural Church Department of the Nanking Theological Seminary.

The College needs new buildings. The work is being carried on in old buildings which are no longer sufficient or suitable. Land has been donated by one of the Missions and a layout of buildings has been drawn by a competent architect and accepted by the Board of Management. The buildings will be simple, of one storey, of brick construction and are laid out in an attractive style. It is estimated that gold \$25,000 would erect the plant. The buildings will be erected as funds are available. Exchange from gold to Chinese currency is now very favorable and this accounts for the low estimate of building costs in gold currency.

The first building required is a dormitory which should be built before the next college year. Residences for our Chinese staff are now urgently needed. Great care will be taken in the erection of the chapel so that a beautiful and worshipful building may be built. The library building and the dormitories are of uniform style. It is hoped that this plant may be completed within the next few years.

Cheeloo

Fukien

Ginling

Hangchow

Hua Chung

Hwa Nan

Lingnan



Symbol of a China Reborn  
Mt. Omei Szechuan

Nanking

St. John's

Shanghai

Soochow

West China

Yenching

# THE CHINA COLLEGES

Volume V

November

1938

Number 2

## LOCATIONS AND ENROLLMENTS

College	Normal Location	Present Location	Enrollment		
			1936-37	1937-38	November 1, 1938
Cheeloo University	Tsinan	Chengtu	567	367	151
Fukien Christian University	Foochow	Shaowu	169	174	135
Ginling College	Nanking	Chengtu	259	85	115
Hangchow Christian College	Hangchow	Shanghai	537	180	462
Hua Chung College	Wuchang	Kweilin	207	350	200
Hwa Nan College	Foochow	Yenping	96	84	70
Lingnan University	Canton	Canton	560	400	622
University of Nanking	Nanking	Chengtu	908	250	420
St. John's University	Shanghai	Shanghai	578	632	820
University of Shanghai	Shanghai	Shanghai	629	396	632
Soochow University	Soochow	Shanghai	667	429	783
West China Union University	Chengtu	Chengtu	440	563	573
Yenching University	Peiping	Peiping	807	588	930
			6424	4498	5913

## COOPERATION BETWEEN THE ASSOCIATED CHINA COLLEGES AND OTHER ORGANIZATIONS FOR AID TO CHINA

It is with deep satisfaction that the China Colleges announce agreements of working cooperation with the Church Committee for China Relief, the Far Eastern Student Service Fund Committee, and the American Bureau for Medical Aid to China. These agreements promise to be of help to both contributors and workers; they are making possible a measure of coordination in office administration and in field cultivation. Because of the large-scale appeal represented by this cooperation, inter-organization clearance of lists is not justified at this time. It is hoped, however, that friends of China will appreciate the magnitude of the task, and will not mistakenly interpret duplication of appeal as conflict of aim in the raising of funds for China's desperate needs. Throughout the duration of her present heroic struggle, and the period of reconstruction to follow, it is expected that generous American citizens will wish to give in support both of emergency relief measures and of education on a long-term basis.

THE CHINA COLLEGES bulletin is issued periodically by the ASSOCIATED BOARDS FOR CHRISTIAN COLLEGES IN CHINA, 150 Fifth Avenue, New York City, U. S. A.

0332

## THE COLLEGE YEAR BEGINS

### COLLEGE OF PUBLIC AFFAIRS - YENCHING

One of the most impressive examples of adjustment in academic work has been achieved by Yenching's department of Public Affairs. Before the war the department was ready to embark upon a carefully thought-out program of rural training and research, and the temporary abandonment of these plans was a serious disappointment. War conditions, however, brought adjustments which may prove to be even more stimulating and productive than the program originally outlined. The University has become more acutely conscious of its own internal social problems, which include every member of the university community and those allied with it in service or trade. At the same time, it has related itself to important projects in the far western provinces of Kweichow and Szechwan, where cordial collaboration with the programs of provincial officials make it possible to carry out work analogous to that which was planned in North China rural reconstruction previous to the outbreak of war.

### CHEELOO IN WEST CHINA

On his arrival in China President Shuming T. Liu proceeded from a meeting with his colleagues in North China to seek the advice of Dr. H. H. K'ung, chairman of Cheeloo's Field Board, whom he met in Hankow. Upon Dr. K'ung's urgent advice, and with the consent of the trustees in America, Cheeloo has gathered a substantial body of students on the West China campus, most of them Shantung men and women who hope to return to Cheeloo at the end of the present conflict. The hospitality of West China Union University has again risen to this emergency and the Cheeloo students will attend classes with the West China students, using the same instruction, classrooms, and equipment.

### LINGNAN IN THE RECENT CRISIS

On October 21, ten days after the Japanese landed forces on the coast of Kwangtung Province, they entered Canton. The civilian population had been evacuating for some days before the occupation, and only 100,000 remained within the city at the time of the Japanese entry. Lingnan University had succeeded in moving its students and the Chinese and younger American members of its faculty from the campus, most of them being sent to Hongkong, where an immediate attempt was made to resume class work. A group of the most experienced American men and women have remained on the campus, to watch over the property and to care for refugees from the city. A cablegram through the American Consul in Canton on October 30 reports 2,000 refugees on the Lingnan campus. There has been no damage to campus or buildings, and no injury to any one connected with Lingnan.

### WEST CHINA AS HOST (Map on opposite page)

The West China campus is uniquely adapted to the hospitable expansion which has been forced upon it by the arrival of refugee institutions from eastern provinces. Originally founded around college units representing cooperating missionary bodies, the scheme has made possible the inclusion of large numbers of guests by the relatively simple expedient of expanding the occupancy of each separate building and section of the campus, a process less easily possible in a more definitely unified university community. Dormitories have been built for certain large groups of the visitors, and the student population of the campus, normally 900, is now 2,619.

The campus has features of beauty in its wandering waterways and green fields of experimental farming, and the valley of the Min in which Chengtu is situated is always lovely with its rotation of four varied crops each year. In the distance the snow-capped Himalyan skyline begins at an elevation of 20,000 feet and loses itself in the clouds at 33,000 feet.

### THE SHANGHAI COLLEGES

Reports from the Shanghai center emphasize the value to the four institutions of their sharing all facilities at their disposal, including instructional staff and equipment of all sorts. In Psychology it has been possible, for example, to plan the use of the same textbooks and to share laboratory space so that all are having experimental work in the subject, two of the colleges for the first time. Soochow University has recently been able to secure from its own campus two thousand important volumes, and Hangchow has brought out five hundred books, together with a substantial amount of apparatus. These books are all going into the library of St. John's University, listed in a common catalogue. The same is true of the combined equipment and apparatus.

### HWA NAN'S EMERGENCY PROGRAM

The College is sharing eight buildings of the Methodist Mission in Yenping. All sorts of expedients have been resorted to in adjustments of schedule in order that the same buildings may serve Hwa Nan and the Yenping girls' school. Hwa Nan classes begin at six-thirty in the morning and run until ten. In the afternoon classes are scheduled from three until six-thirty. Porches and dining rooms supplement classroom space, and the old electric lighting plant is serving as a chemistry laboratory.

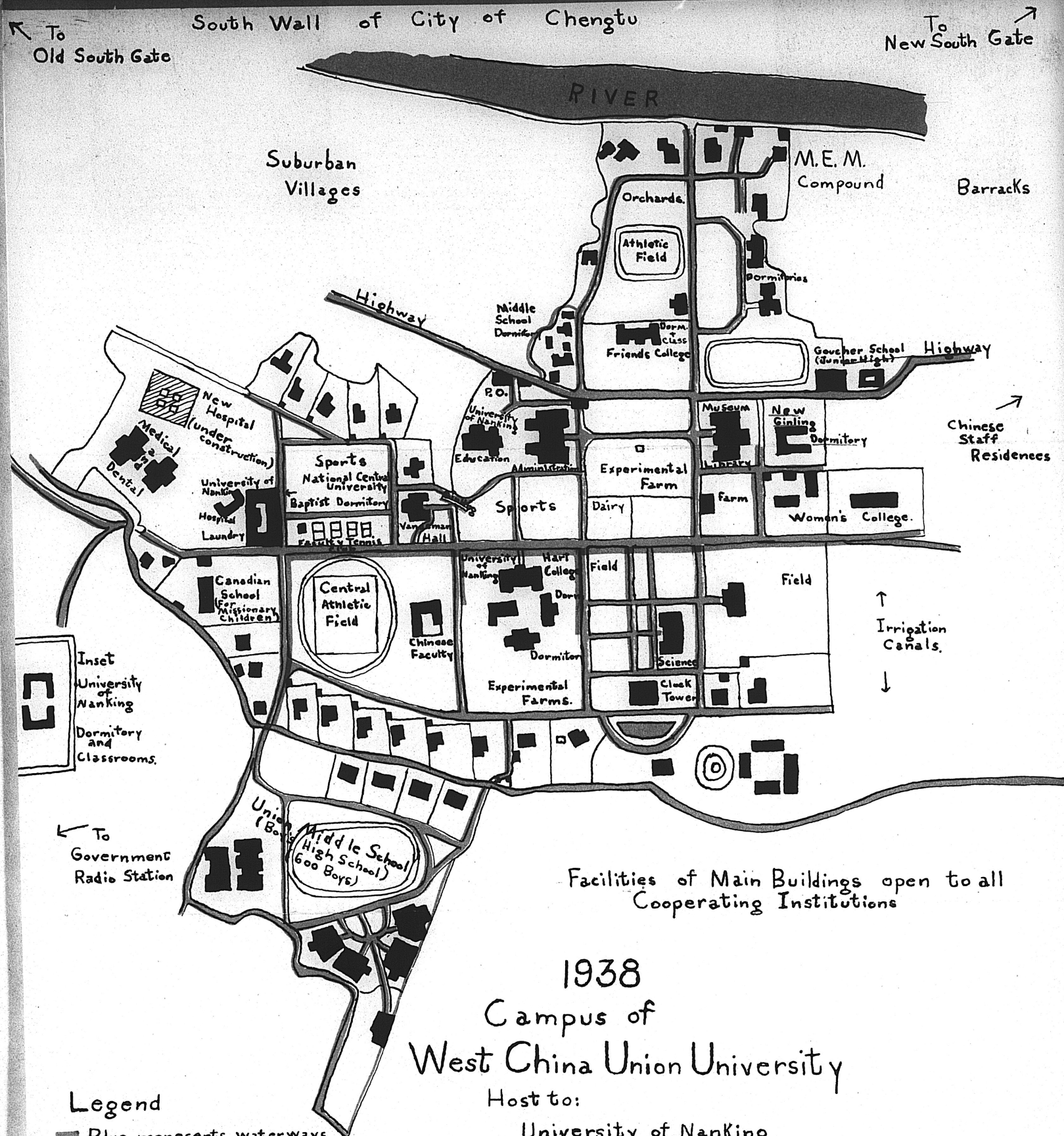
### HUA CHUNG AT KWEILIN

The temporary home of Hua Chung College is Kweilin, provincial capital of Kwangsi, traditionally famous for its hills and water. There are no less than seventeen hills in and around the city, many of them standing isolated like croquettes on a platter, with large caves at the bottom used as dugouts during air raids. College work is being carried on in a three-story building owned by the Southern Baptist Mission. Students are housed at present in several large Chinese houses rented as hostels, three for men students and one for women. In the present enrollment of 200 there are eighty freshmen, admitted through examinations held in September in Kweilin, Hongkong, and Hankow.

### CHEELOO'S SCHOOL OF THEOLOGY

Activity continues on the Cheeloo campus in Tsinan, centered in the service of the hospital and in the continued training for rural work under the School of Theology. The service of the University Rural Institute continues to be available to workers previously trained. All the news from Tsinan emphasizes the limitations of life and work in occupied territory and acute need on the part of the Chinese population for all the service which the University can give.

The CHINESE DELEGATION to the INTERNATIONAL MISSIONARY CONFERENCE at MADRAS is an impressive list of forty-five men and women. Many of them bear titles signifying leadership of high rank, including presidents and deans of colleges and bishops of the church. For thirty-six of the forty-five men and women we have a record of the college at which their undergraduate training was received. All but three of the thirty-six are graduates of one or another of the Christian Colleges in China.



### Legend

- Blue represents waterways
- Orange represents roadways and paths

## 1938 Campus of West China Union University

Host to:

University of Nanking

Ginling College

and units of: Cheefoo University  
Soochow University  
National Central University

0334

## THE COLLEGES AND THE NATION

### PROJECTS ON THE GINLING CAMPUS

Funds are in Miss Vautrin's hands for a six-months' industrial project for one hundred destitute older women and girls. The Dean is a graduate of Ginling College, a trained social worker. There is also to be on the Ginling campus a secondary school project, and a promising relationship between these two types of work is that the homecraft classes of the women will be taught largely by the students of the secondary school. In this way they earn their board, room, and tuition. The emphasis in the industrial work will be on the production of useful, everyday necessities of humble homes, products for which native materials can be secured.

Ginling students talking to children in Szechwan.

### SUMMER RURAL SERVICE, CHENG TU

The five institutions at present sharing the hospitality of the West China campus joined in a summer training project at Wenching, 45 li (15 miles) from Chengtu. The daily program was a strenuous one, beginning at five o'clock. The young people aimed to convince their rural friends that they were genuinely interested in helping them to face their individual problems and to make themselves valuable citizens of a sorely pressed nation. The West China and National Central Medical Schools supplied internes for the clinics. Ginling formed the religious group, and it was Nanking's part to direct agricultural activities. One of the workers says: "At first the people did not understand our motives, but their confidence was soon won, and in the end they strongly urged us not to leave, but to go on working there. I feel very strongly that we should have more of this kind of practice during our college training."

### FUKIEN'S WORK AT SHAO WU

Fukien Christian University continues to make itself valuable to its country neighbors. The students are helping in the training and organization of villagers. During a recent project period of four months, the students showed themselves able to endure physical hardships cheerfully and actually to share the daily life of the people. The program was varied, including dramatic presentations and mass singing. Some time is always given to reporting current events and to explaining the need of unwavering national morale.



A girl student, Chiu Deh-yung, telling the farmers that the students are interested in them. (Copyright photograph by Bruce Collier)

refugees streaming westward. There is no attempt to have such small industries take the place of modern production on large scale, but the need at present is to develop easy transition from old style village and family economy to the modern problems now so suddenly faced.

### A Students' Rural Project:

(left) A Dramatic Group. Rural audiences are told the story of the national emergency through short plays.

(right) Officers of the Project.



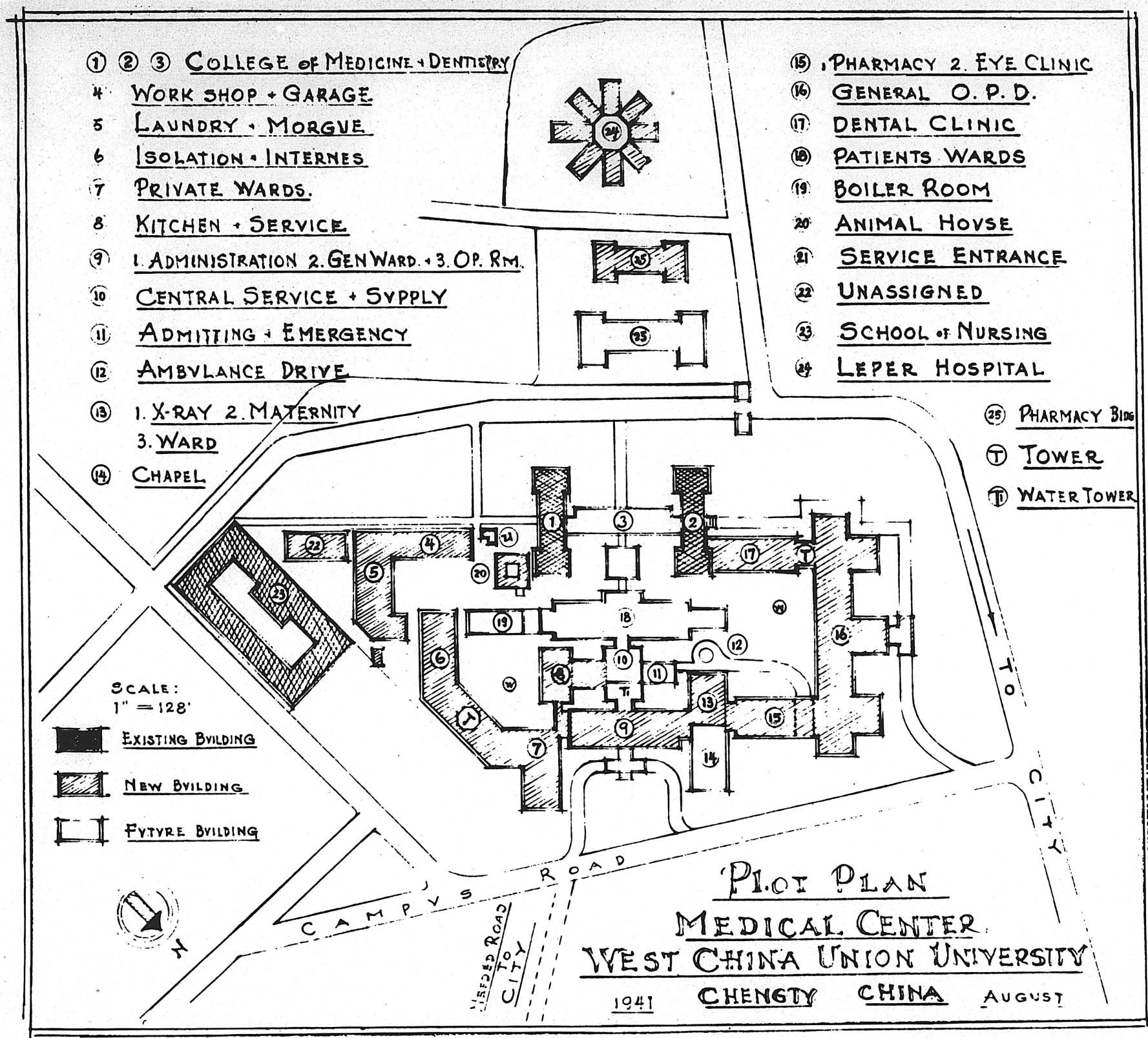
Ginling students visiting Szechwan homes.

### NANKING'S AGRICULTURAL PROGRAM

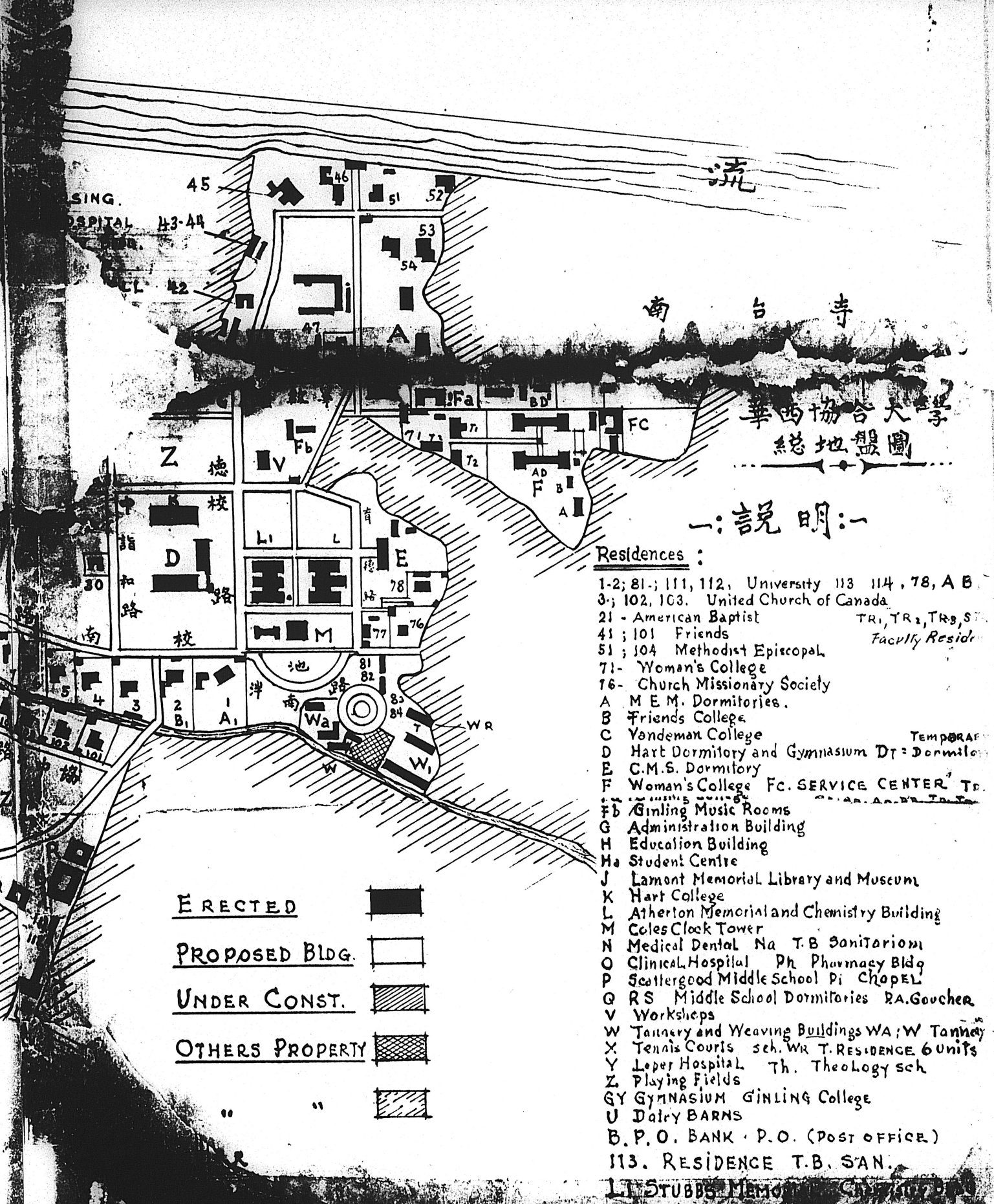
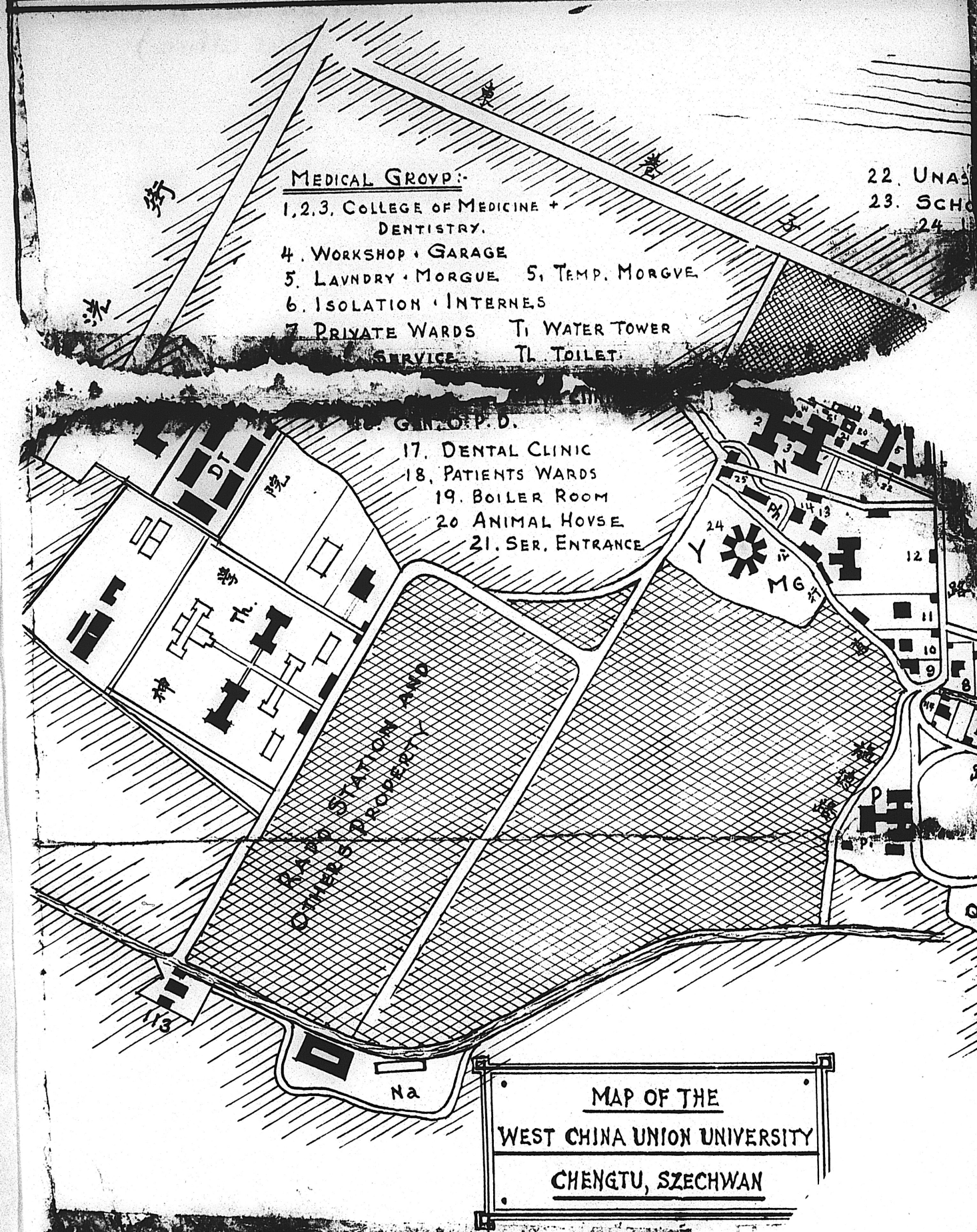
The University of Nanking has wasted no time in making itself a part of agricultural development in the province of Szechwan. Working together the Departments of Agriculture of West China Union University and the University of Nanking are giving a one-year course for rural workers and a four months' course in the management of rural cooperatives. This latter course has five hundred students and is given at the request of the Szechwan Provincial Cooperative Commission. Agricultural activity is coordinated at many other points. There has been a survey trip for the discovery of colonization opportunities. Assistance is being given in crop reporting under the Szechwan Provincial Food Control, and in organization and direction of marketing and producing cotton. It is hoped that implements and machinery destroyed in and near Nanking can be replaced in order that the University may help to promote better equipment in farm machinery and in rural industries.

### COOPERATIVE SMALL-SCALE INDUSTRY

The colleges in Chengtu are being asked to supply expert advice in the encouragement of some thirty thousand industrial cooperatives, designed to replace the industries destroyed along the coast and to provide employment for millions of



0336



- 一: 說明:**
- Residences:**  
 1-2; 81-; 111, 112, University 113 114, 78, A B  
 3; 102, 103. United Church of Canada  
 21 - American Baptist TR, TR, TR, ST  
 41; 101 Friends Faculty Reside  
 51; 104 Methodist Episcopal  
 71- Woman's College  
 76- Church Missionary Society  
 A M E M. Dormitories.  
 B Friends College  
 C Vandeman College TEMPORARY  
 D Hart Dormitory and Gymnasium DT = Dormitory  
 E C.M.S. Dormitory  
 F Woman's College FC. SERVICE CENTER T.  
 G Administration Building  
 H Education Building  
 Ha Student Centre  
 J Lamont Memorial Library and Museum  
 K Hart College  
 L Atherton Memorial and Chemistry Building  
 M Coles Clock Tower  
 N Medical Dental Na T.B Sanatorium  
 O Clinical Hospital Ph Pharmacy Bldg  
 P Scattergood Middle School Di Chapel  
 Q RS Middle School Dormitories RA. Goucher  
 V Workshops  
 W Tannery and Weaving Buildings WA; W Tannery  
 X Tennis Courts sch. WR T. RESIDENCE 6 Units  
 Y Loper Hospital Th. Theology sch  
 Z Playing Fields  
 GY GYMNASIUM GINLING College  
 U Dairy BARN  
 B. P. O. BANK P. O. (POST OFFICE)  
 113. RESIDENCE T.B. SAN.  
 11 STUBBS MEMORIAL CHURCH

0337

Map of West China Union University

(orig. received Oct 11 1943  
Joint Office)

2

7

7

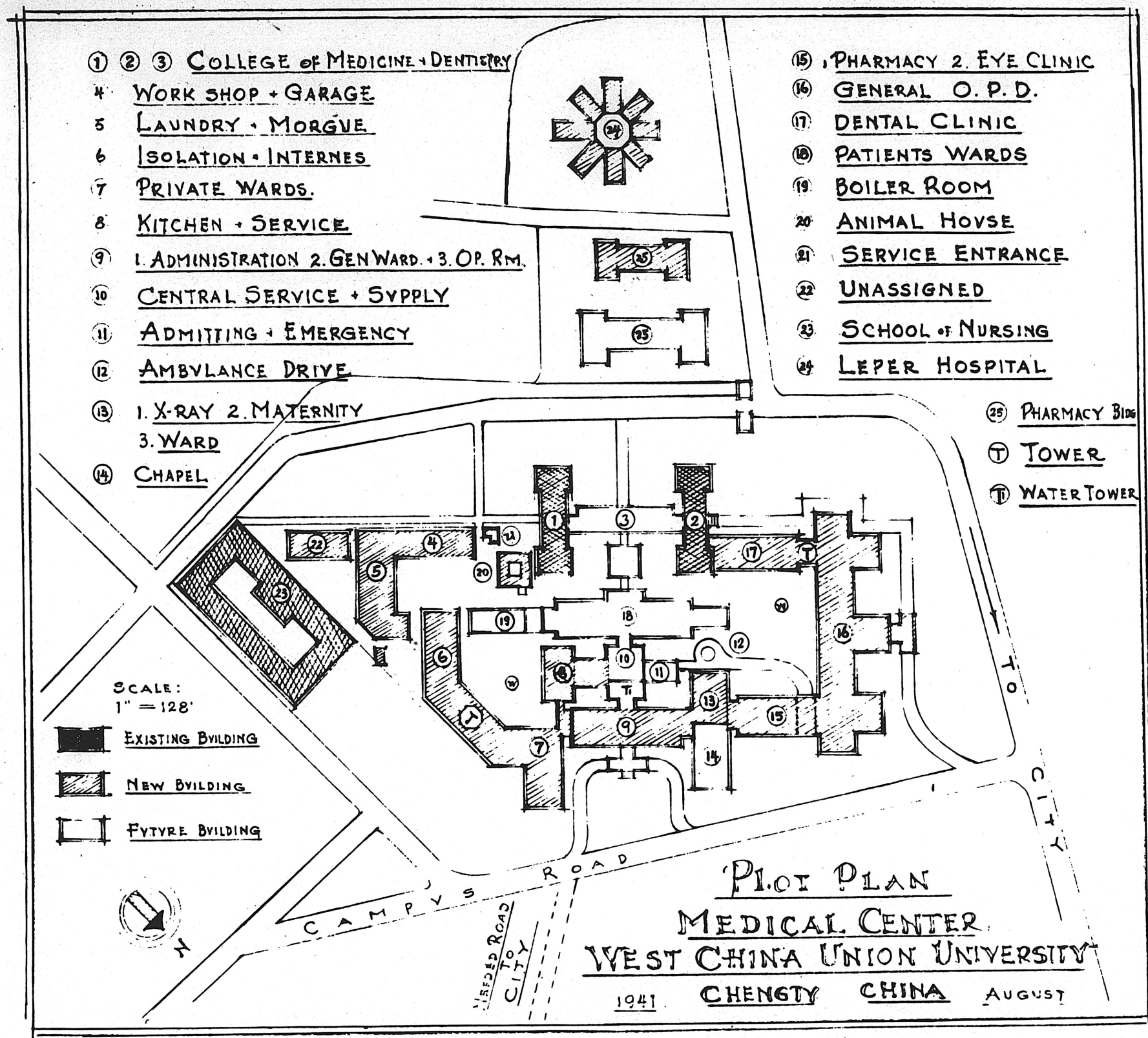
4

3

9

6

0338

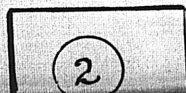
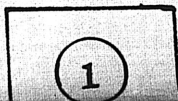
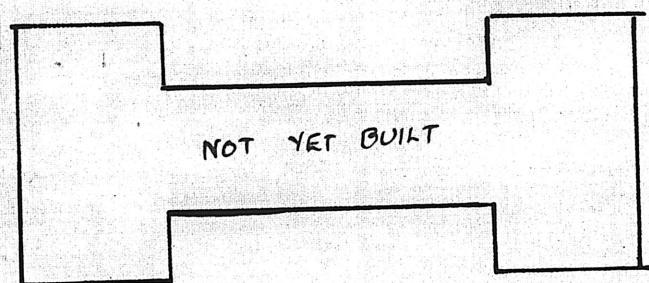
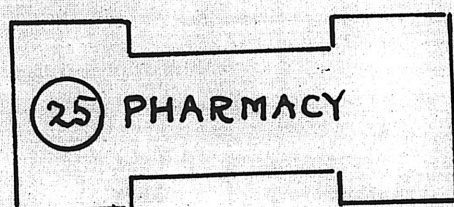
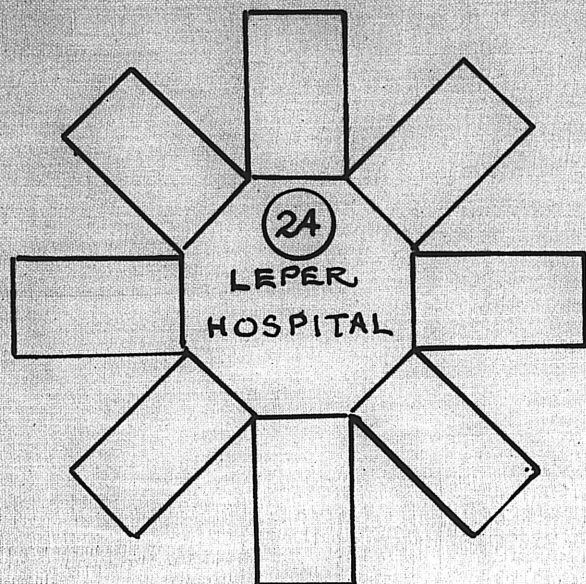


0339

MEDICAL CENTER  
WEST CHINA  
UNION UNIVERSITY

0340

2  
7  
7  
4  
3  
9  
6



0341

2

7

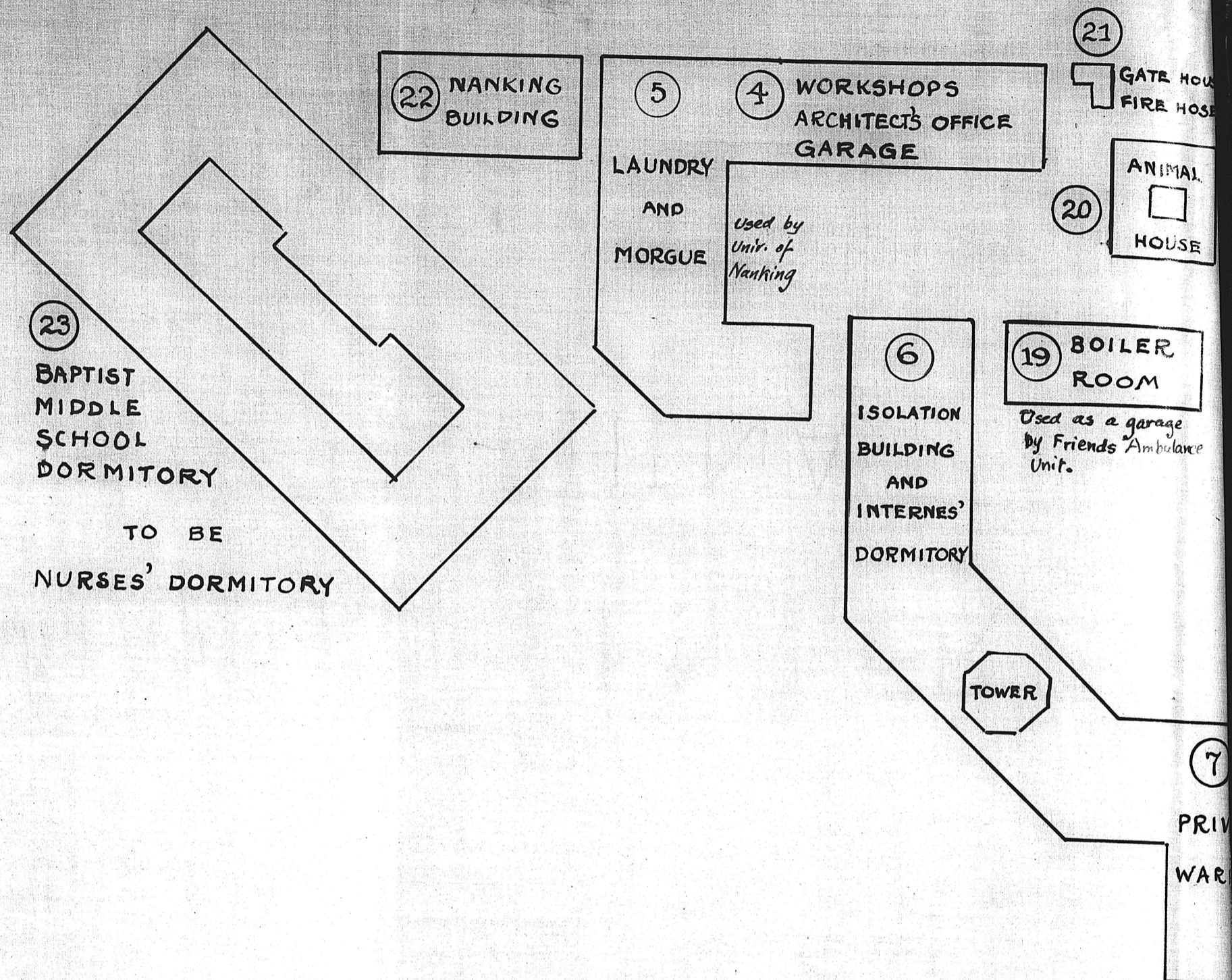
7

4

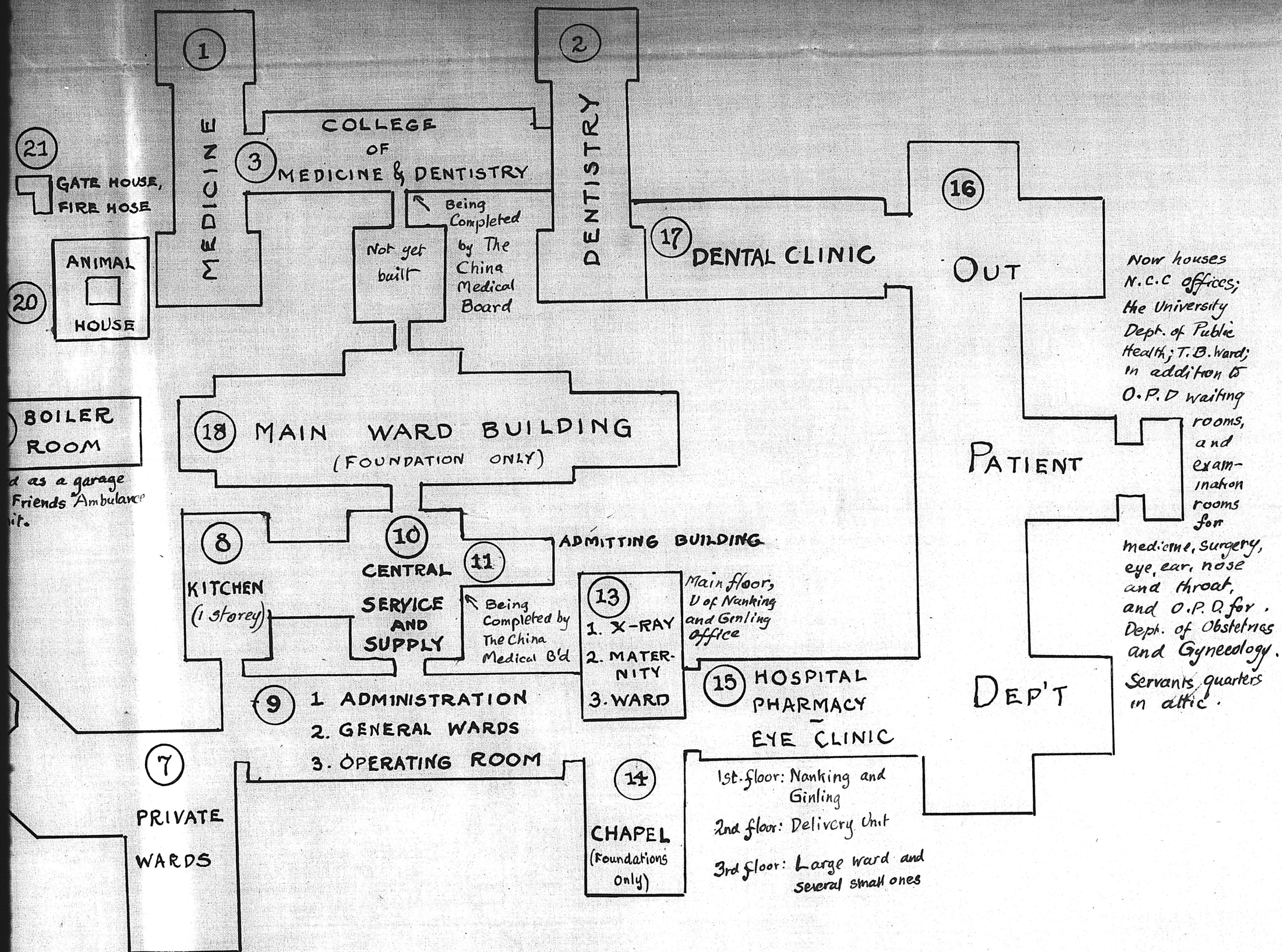
3

9

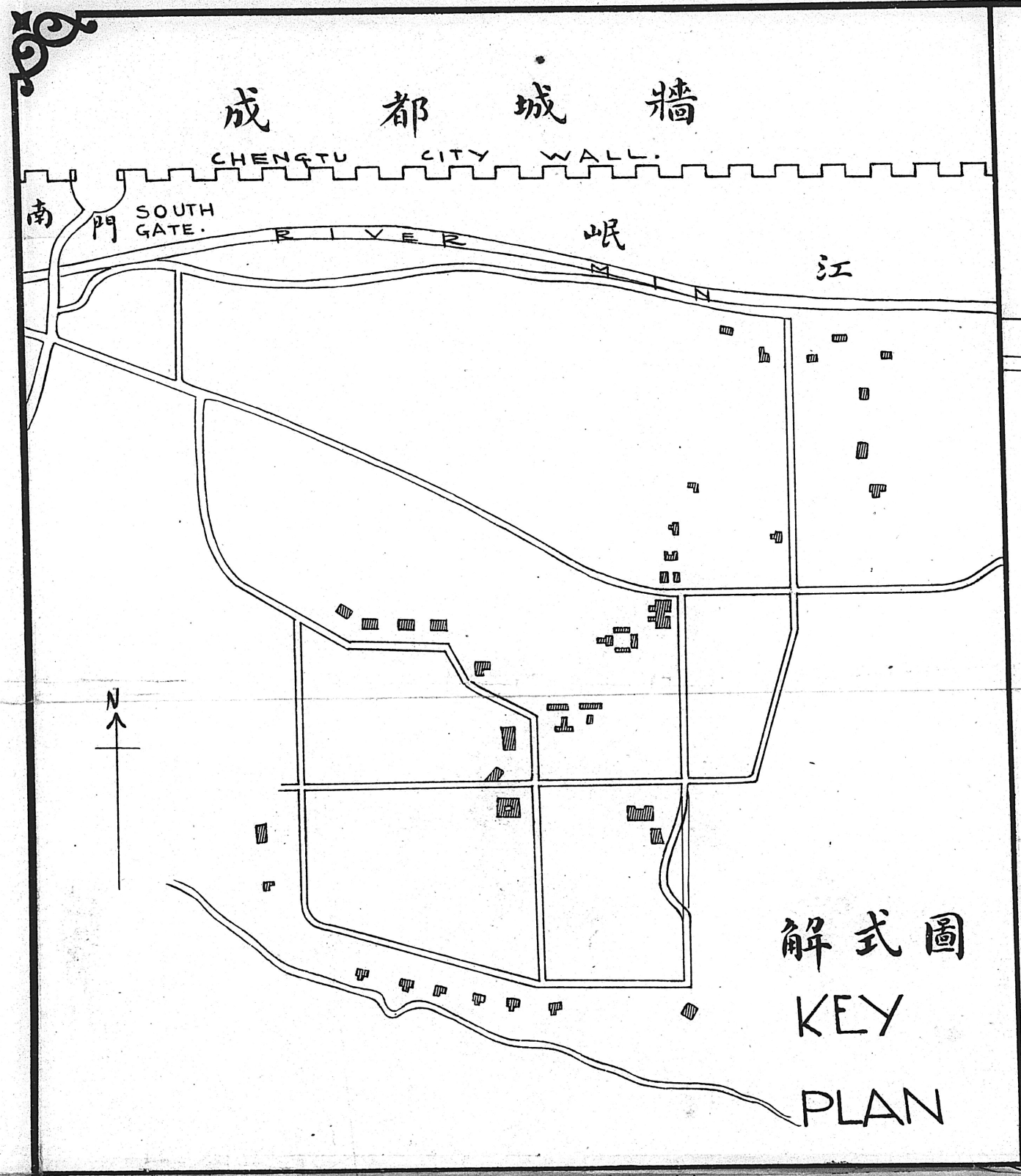
6



0342



0343



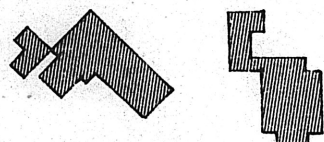
0344

2  
7  
7  
4  
3  
9  
6

CHENG TU CITY WALL.

成都城牆

RIVER MIN 岷江



TEACHERS' RESIDENCES

教員住宅

公誼會

Friendship Miss. Association

住宅  
RESIDENCE

臨時大學寄宿舍

TEMPORARY COLLEGE DORMITORY

住宅  
RESIDENCE

臨時寄宿舍

TEMPORARY DORMITORY

大門



教員住宅

TEACHERS' RESIDENCES



賈會督紀念室

美以美會

Meth. Epis. Miss.

JOYCE MEMORIAL 大學講室



DORMITORY 寄宿舍

住宅

TEMPORARY DORMITORY

Closed TO

Alternate

0345

2774396

PLAN

SITE FOR  
UNION MIDDLE  
SCHOOL

教員住宅  
TEACHERS' RESIDENCES

浸 A<sup>mer.</sup> B<sup>aptist</sup>

禮  
會  
F<sup>oreign</sup> M<sup>ission</sup> S<sup>ociety</sup>

臨時中學校

TEMPORARY  
MIDDLE  
SCHOOL

Baptist  
Middle  
School  
Dormitory

臨時寄宿舍  
TEMPORARY  
DORMITORY

COLLEGE  
大學講室

TEMPORARY  
NORMAL  
SCHOOL  
臨時師範學校

英美會  
教士幼孩學校

C.M.M. SCHOOL  
FOR MISSIONARIES  
CHILDREN

臨時寄宿舍  
TEMPORARY  
DORMITORY

COLLEGE  
大學講室

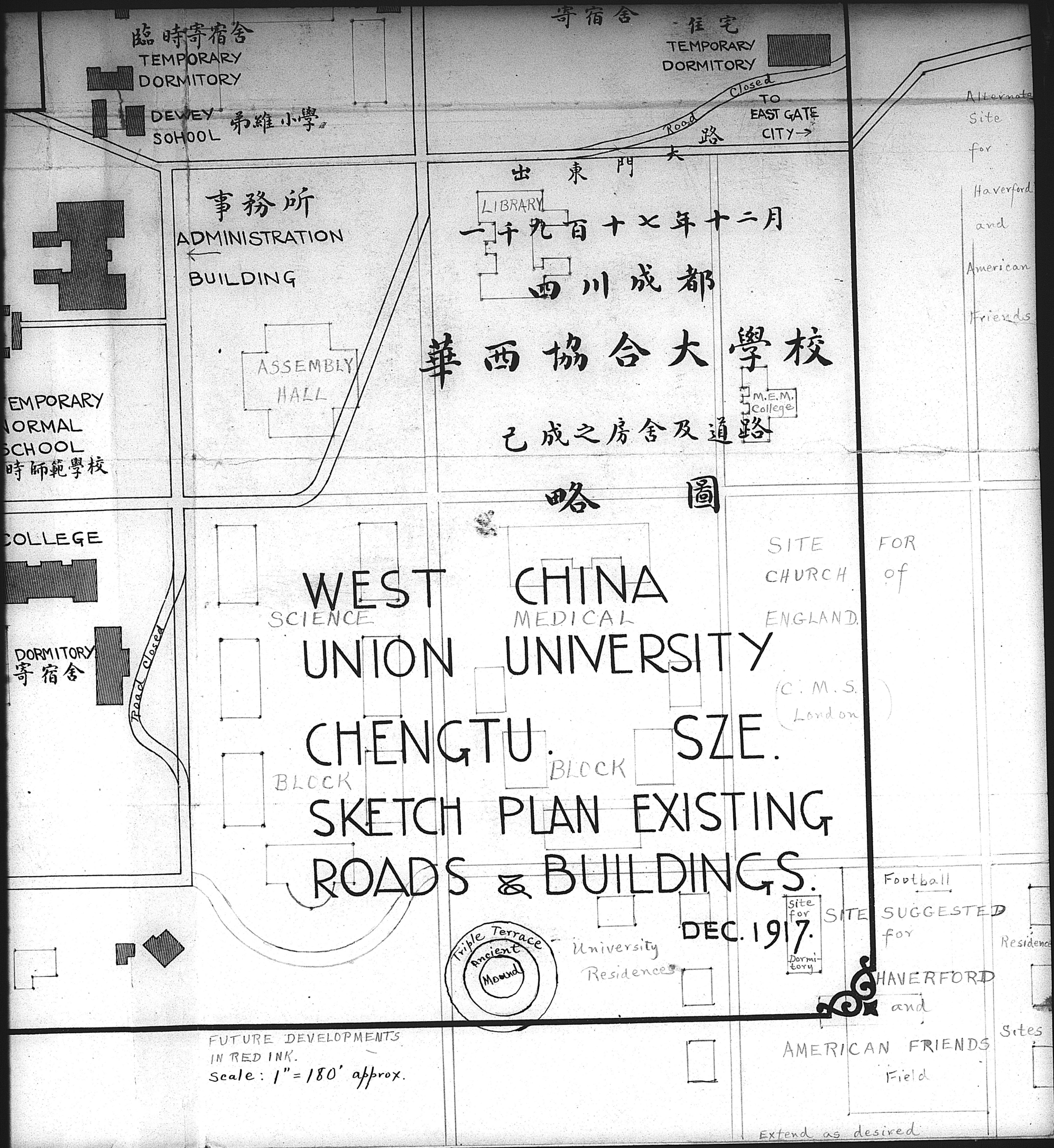
DORMITORY  
寄宿舍

Canadian Methodist Mission  
英美會

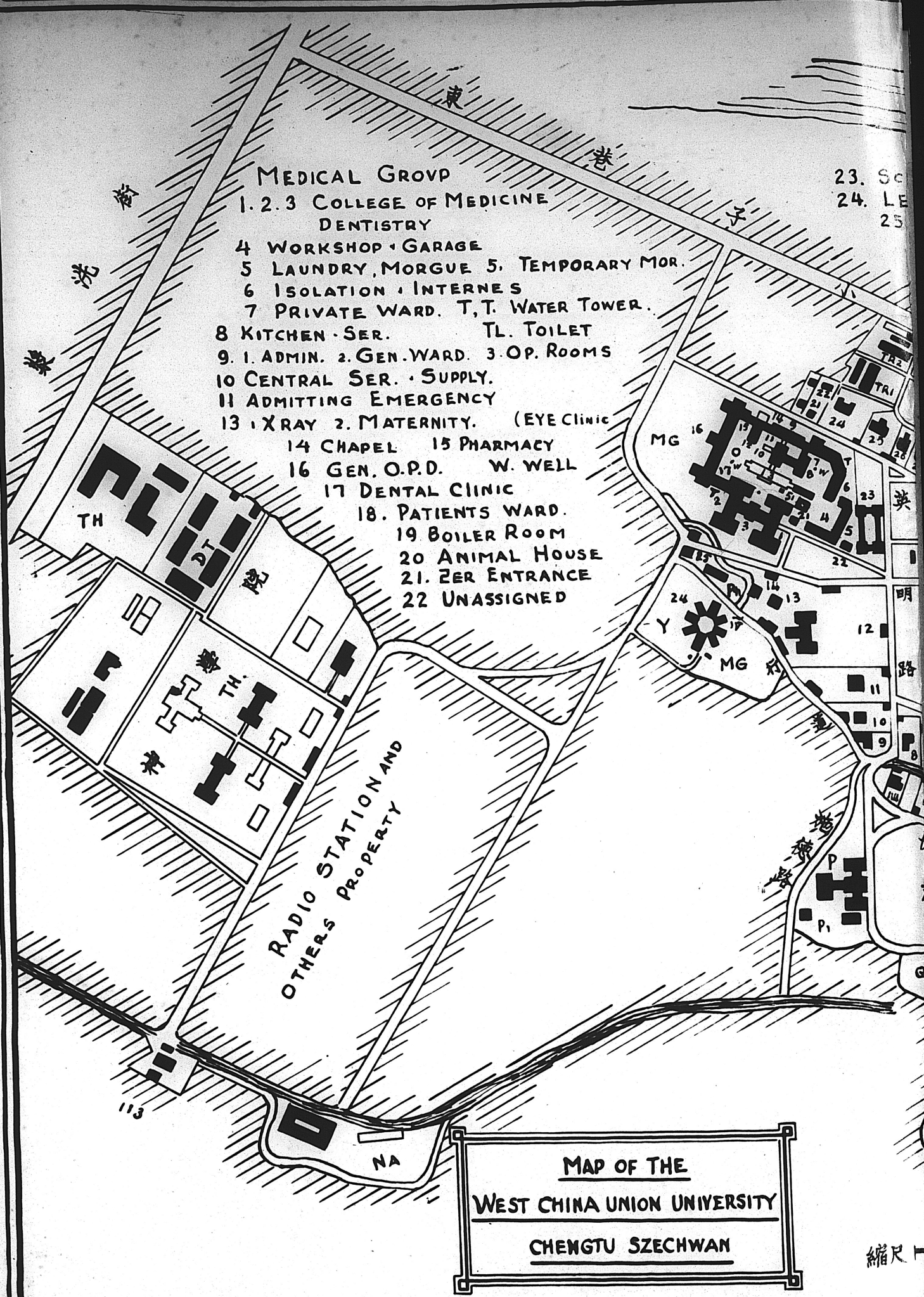
TEACHERS' RESIDENCES  
教員住宅

ALTERNATE SITE FOR  
UNION MIDDLE SCHOOL

0346



0347



MEDICAL GROUP

1. 2. 3 COLLEGE OF MEDICINE DENTISTRY
- 4 WORKSHOP - GARAGE
- 5 LAUNDRY, MORGUE 5. TEMPORARY MOR.
- 6 ISOLATION, INTERNES
- 7 PRIVATE WARD. T.T. WATER TOWER.
- 8 KITCHEN - SER. TL. TOILET
9. 1. ADMIN. 2. GEN. WARD. 3. OP. ROOMS
- 10 CENTRAL SER. - SUPPLY.
- 11 ADMITTING EMERGENCY
- 13 XRAY 2. MATERNITY. (EYE CLINIC
- 14 CHAPEL 15 PHARMACY
- 16 GEN. O.P.D. W. WELL
- 17 DENTAL CLINIC
18. PATIENTS WARD.
- 19 BOILER ROOM
- 20 ANIMAL HOUSE
21. 2ER ENTRANCE
- 22 UNASSIGNED

23. SC  
24. LE  
25

MAP OF THE  
WEST CHINA UNION UNIVERSITY  
CHENG TU SZECHWAN

縮尺

0348

