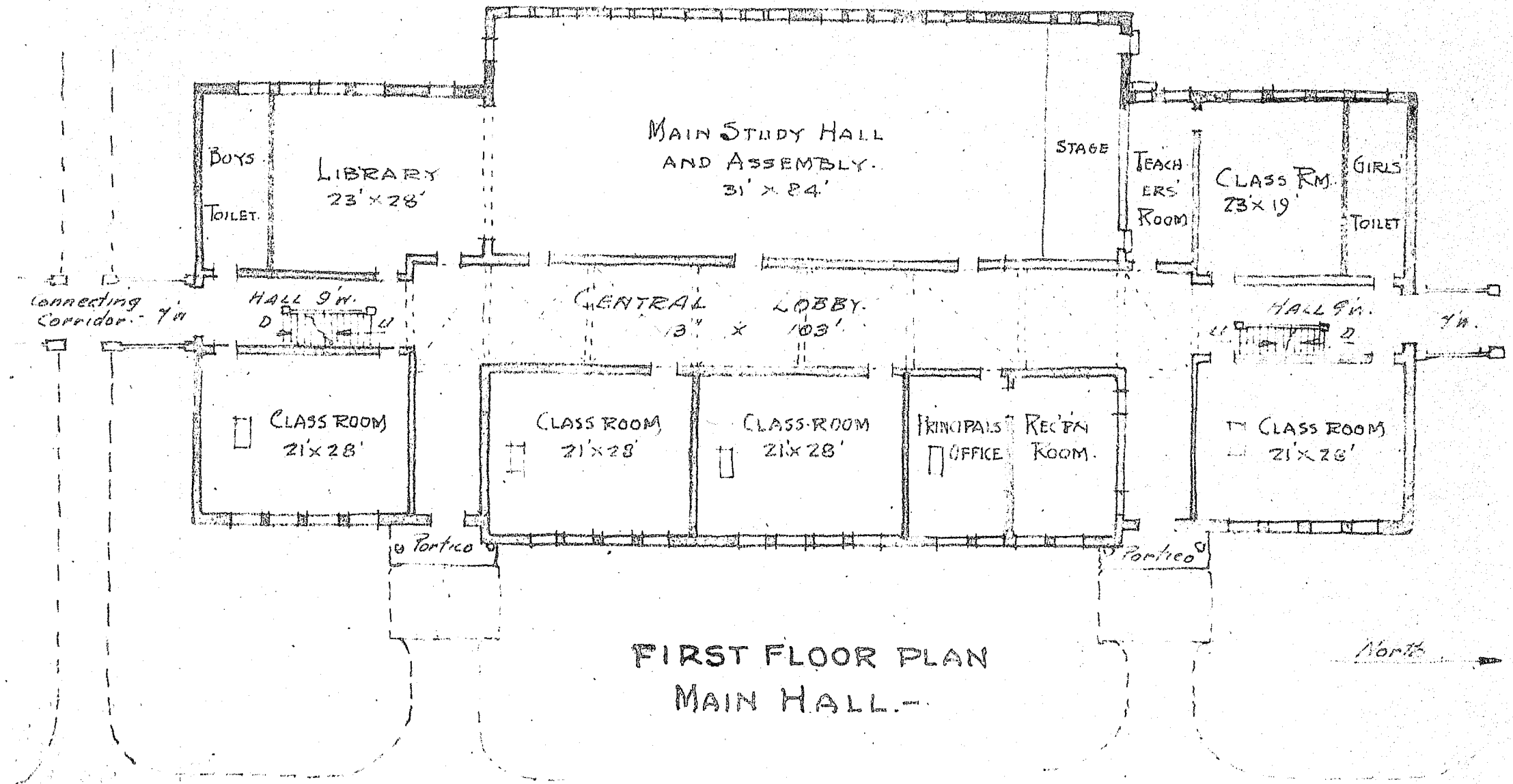


243 3991

UBCHEA ARCHIVES  
COLLEGE FILES  
RG 11

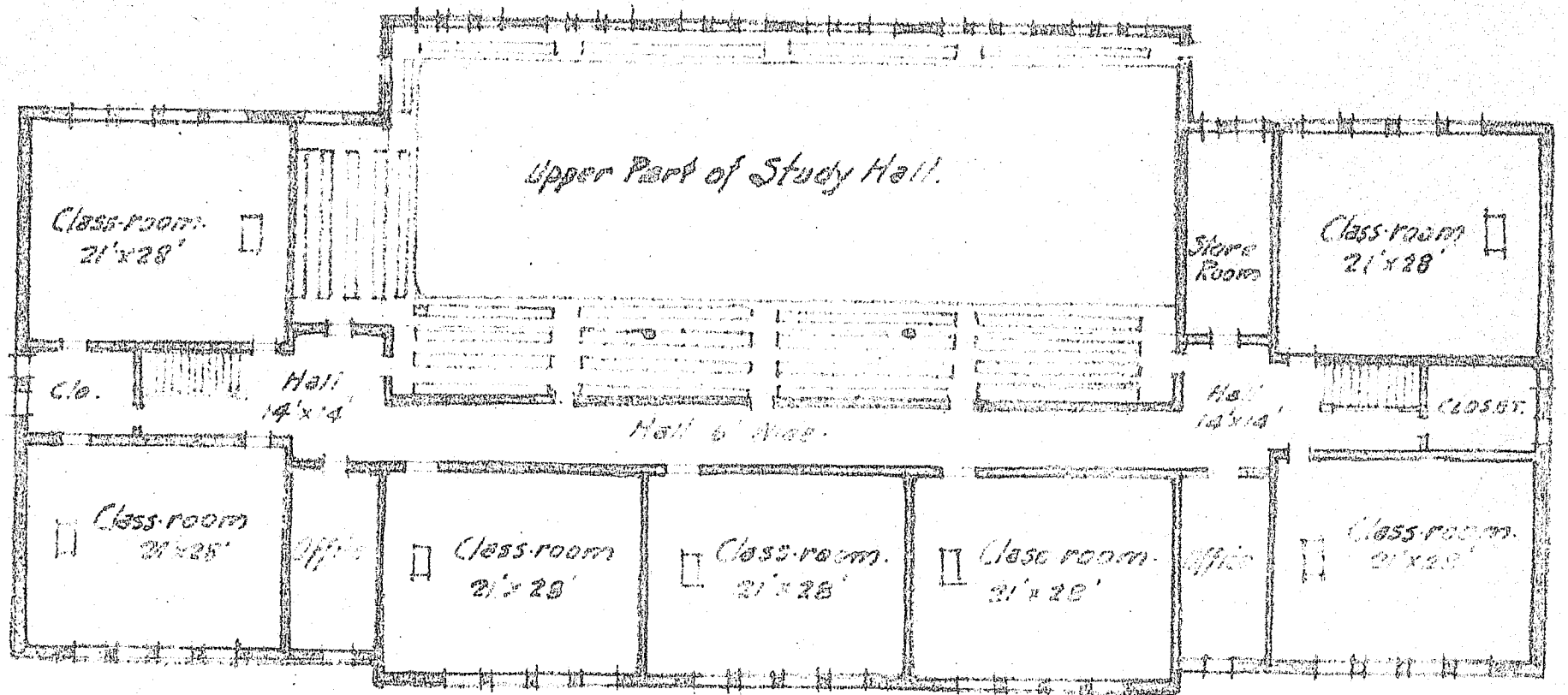
Shantung / Cheeloo  
Administrative  
Blueprints, map (1927 n.d.)  
(see also : Oversize material)



PROPOSED HIGH OR MIDDLE SCHOOL GROUP  
FOR SHANTUNG CHRISTIAN UNIV'Y.  
AT TSINAN-FU CHINA.

63-A-4. JAN. 1927

SCALE  $\frac{1}{100}$

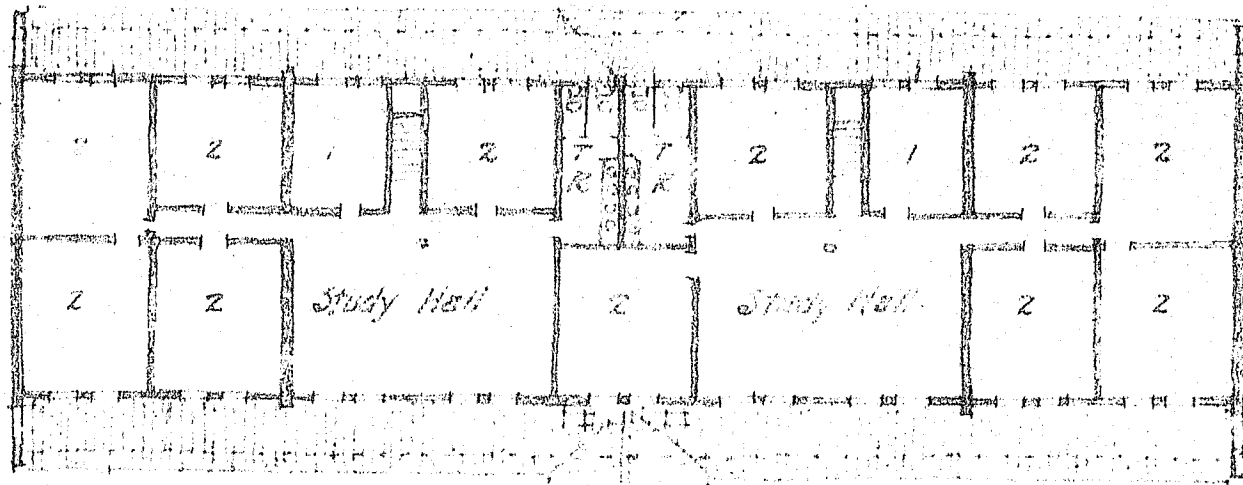


SECOND FLOOR PLAN MAIN HALL  
 HIGH SCHOOL GROUP FOR S.C. UNIVERSITY  
 AT TSINAN-PO, CHINA.

North. →

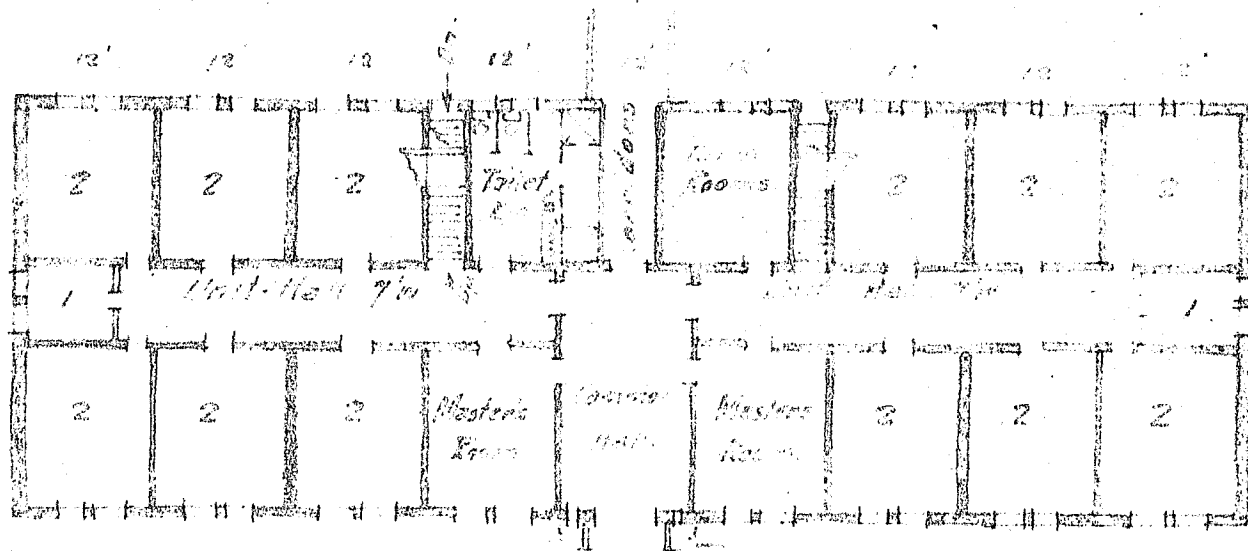
63-A-5 E.P.B. Jan. 1927.

Scale = 1 to 200.



SECOND FLOOR PLAN

North. →

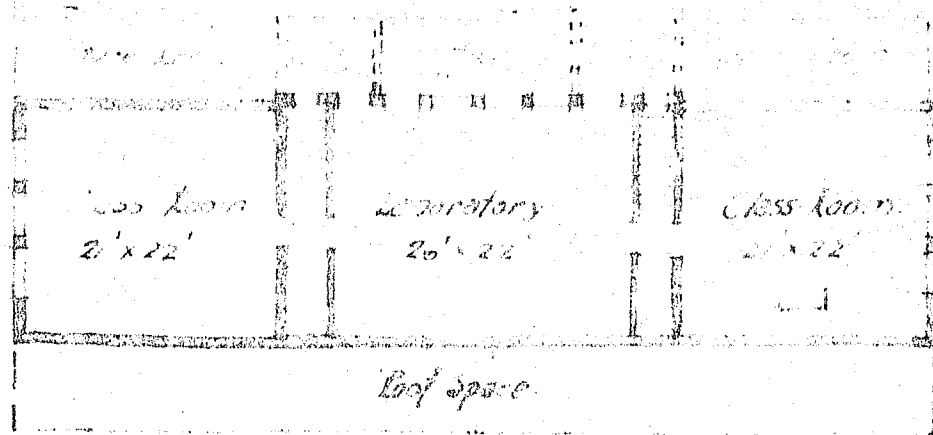


MAIN FLOOR PLAN

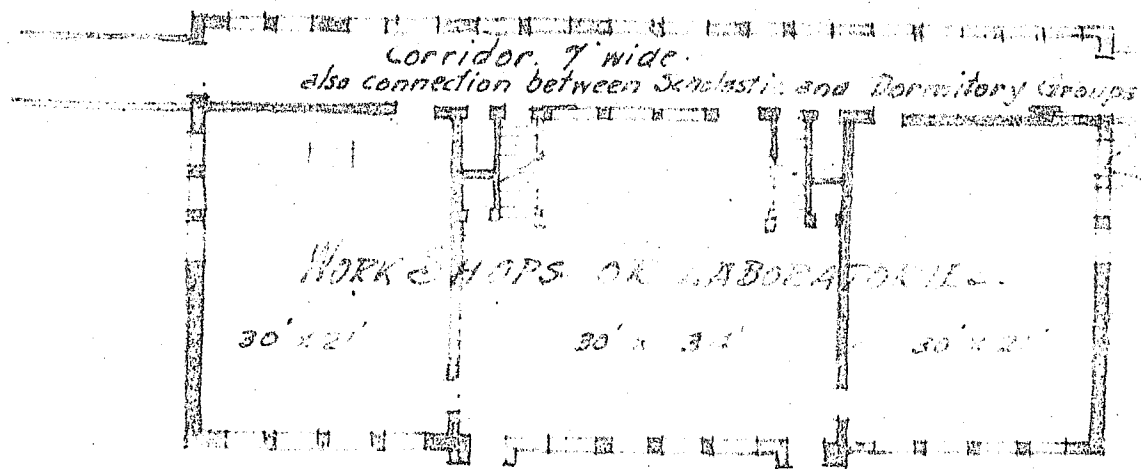
50 BOYS DOUBLE UNIT  
DORMITORY. FOR HIGH SCHOOL.  
SHANTUNG CHRISTIAN UNIV.  
TSINAN-FU CHINA.

Scale 200

63-A-7 L.F.B. Jan 1937



SECOND FLOOR PLAN.



MAIN FLOOR PLAN.

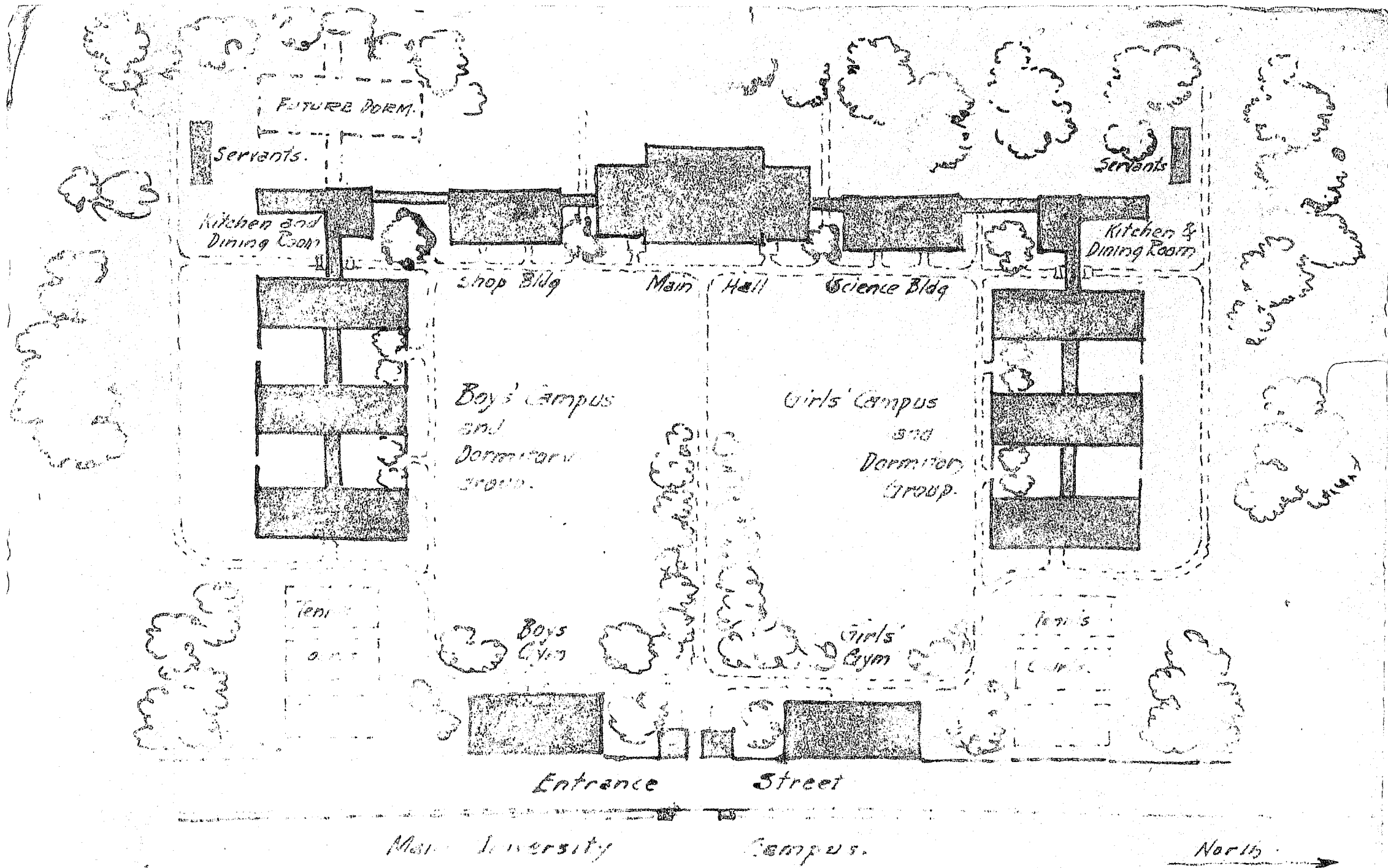
Corridor for 2nd floor

Workshop offices or store rooms can open directly into these work rooms by light stairway.

SHOP OR SCIENCE BLDG.  
OF PROPOSED HIGH SCHOOL  
for SHANTUNG CHRISTIAN UNIVERSITY.  
AT TSINAN - FU CHINA.

63-A-5-1-13 200-17-1

Scale 1/200

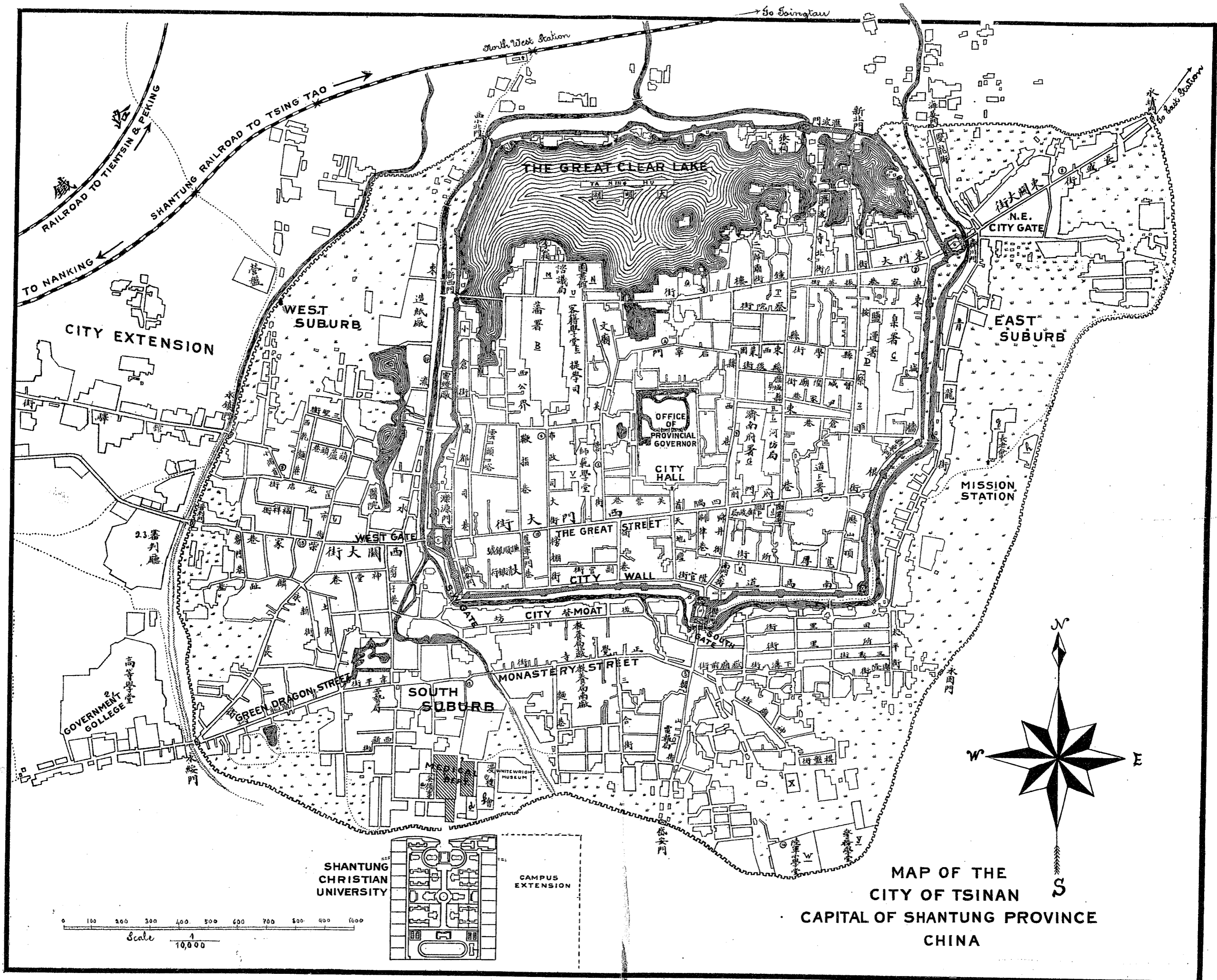


BLOCK PLAN OF PROPOSED HIGH SCHOOL GROUP  
 FOR SHANTUNG CHRISTIAN UNIVERSITY  
 A SINAN-FU - CHINA

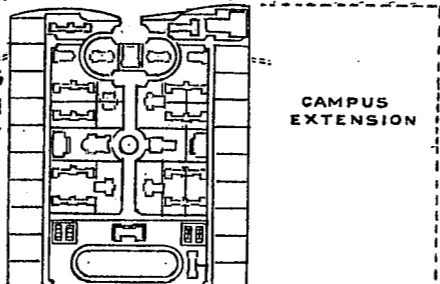
63-A-3- JAN-1937.

SCALE  $\frac{1}{1000}$

Cheloo

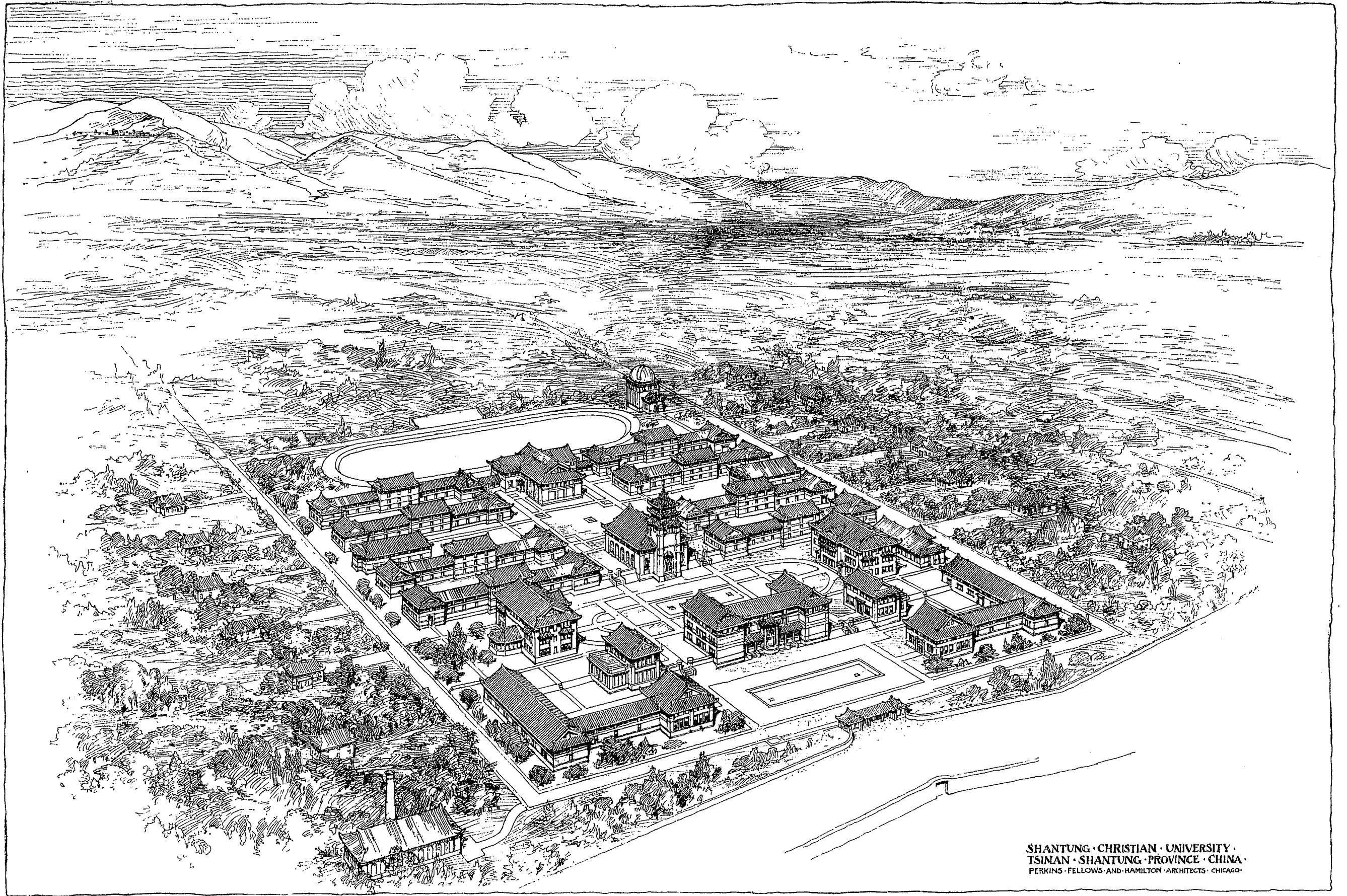


Scale 1/10,000



MAP OF THE CITY OF TSINAN  
CAPITAL OF SHANTUNG PROVINCE  
CHINA





SHANTUNG · CHRISTIAN · UNIVERSITY ·  
TSINAN · SHANTUNG · PROVINCE · CHINA ·  
PERKINS · FELLOWS · AND · HAMILTON · ARCHITECTS · CHICAGO ·

Shantung X train (Cheloo?)