

176 3200

UBCHEA ARCHIVES  
COLLEGE FILES  
RG 1

Hwa Nan  
Corres.

Lacy, Henry V.	1943-1944
Lacy, Mary	1938
Ling, Betty S.	1934-1943
McConnell, Eva	1933-1935
MacKinnon, Sallie Lou	1944

1  
7  
6  
3  
2  
0  
0

12 14

Henry Lacy  
1943-1944

When copying, please  
Keep separate in file.

1  
7  
6  
3  
2  
0  
0

12 15

j

Foochow, Fukien,  
Free China.  
April 21, 1943

Dear Friend:

Before seeing this letter you probably will have heard of the passing, on the 11th of January, last, at Kutien, of our loved friend and co-worker, Wesley Smith Bissonnette.

It was my privilege to be at Kutien for the memorial services, and the expressions of affection and appreciation came from the depths of sincere hearts. He was fittingly characterized as a lover of the common man. We buried him here in Foochow alongside of Bishop Wiley, Nathan Sites, Nathan Plumb, James H. Worley, and others who preceded him in this field. I know that your prayers will go up for Mrs. Bissonnette and the daughters in Honolulu.

The Bishop has asked me to take over responsibility for the work which for nearly thirty years was Wesley Bissonnette's life. I feel that it is like stepping into shoes which are much too large for me, and I am depending on you and on God's strength to carry on,

I have just recently returned from a trip to Kutien. I was thrilled while there to hear of the reports from the evangelistic meetings which had just been held at Loh Kang. A team of five had been at Loh Kang for a week and in that little mountain village more than twenty persons had made the decision to follow the way of Christ. The team was composed of the pastor, who has been there for a number of years, the new Superintendent of the Kutien District, Rev. Bau Ing-seng, the two women evangelistic workers, Miss Grace Ding, and Miss Dang Hie-duang, and a layman, the manager of the electric light plant in Kutien city. This man, whose father was a Methodist preacher, took out a whole week from his work to help in this evangelistic program. When I called on him at his home he was nursing a number of bad blisters which had been acquired in walking the ten miles from Loh Kang to Kutien, but that did not dishearten him from carrying out the plan of going on to Seng Leng the following week for a series of meetings there. As I talked with each of these workers their faces beamed as they recounted the experiences of those days.

I am leaving for Kutien again in a few days and shall hope to have some personal contacts with some of the meetings which are being held but I want to get this letter off to you because we need your support as we have never needed it before. You have stood by Brother Bissonnette through these years. I am sure you will stand by the work as he looks down on it from his new field of activity. The new district superintendent is eagerly pushing his work on the Kutien District, Rev. U Cu-de, who is closing a second period as superintendent of the Binghu District, is energetically pushing the new five year program of Forward Advance which was adopted at our last conference session.

Evangelistic opportunities are wonderful but our Christian workers are facing a tremendous problem in the financial situation. A new scale of salaries was adopted for all our Christian workers at the Conference session in December. This more than doubled their stated salaries but it is now utterly inadequate owing to the inflationary tendencies of the past four months. An official commodity price index which has been furnished me, indicates that the cost of living in this part of China is now eighty-three times higher than it was in December, 1936. This index has more than doubled since we took our action in December.

12 16



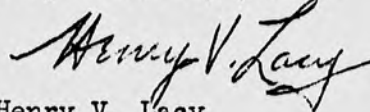
Page 2.

At a recent meeting of our Field Committee the Church here was asked to multiply their giving by seventy in order that they might do their share in maintaining the standard of living to which our workers were accustomed six or seven years ago. May we not ask that you at home help us in this program? Due to changes in exchange rates we need only ask that the church in the United States, in order to maintain its share of the work as it was maintained in 1936, multiply its giving by fourteen. When you realize that the dollar which you gave in 1936 is now worth only seven cents in relation to the amount that it can do, I am sure that you will be more than anxious to help us overcome this handicap.

These are hard days for all of us, but I am sure that if we rely on God's strength and go forward in faith, believing, we can win out and the Kingdom of Heaven will come as it has been promised.

May God strengthen you in these days as you try to do your part in carrying on his work.

Very sincerely yours,



Henry V. Lacy

HVL:rg

1  
7  
6  
3  
2  
0  
0

1217

As a result of the meeting of the Council held on 21st July 1943, the Council has decided to continue its work in the field of research in the field of the history of the Church in the 19th century. The Council has also decided to continue its work in the field of the history of the Church in the 19th century. The Council has also decided to continue its work in the field of the history of the Church in the 19th century.

The Council has also decided to continue its work in the field of the history of the Church in the 19th century. The Council has also decided to continue its work in the field of the history of the Church in the 19th century. The Council has also decided to continue its work in the field of the history of the Church in the 19th century.

RECEIVED  
UNIVERSITIES  
JUL 19 1943  
JOINT OFFICE

1  
7  
6  
3  
2  
0  
0

12 18

C O P Y

June 6, 1944

HENRY LACY  
NANTAI  
FOOCHOW (Fukien China)

REALIZING POTENTIAL GRAVITY SITUATION URGE SERIOUS  
CONSIDERATION EMBASSY ADVICE BUT WE TRUST YOUR GROUP  
JUDGMENT WEIGHING DIFFICULTIES TRAVEL WEST STOP TRANSMIT  
ELMER GALT AND FORWARD NANPING HINGHWA YUTU SHAOWU

CARTWRIGHT FAIRFIELD MACKINNON

FTC/AE

Copy to: Dr. Fairfield, Miss MacKinnon

Charge: one third to Div. For. Missions, 1/3 to For.  
Dept., Woman's Div., 1/3 to Dr. W. C. Fairfield,  
Am. Bd. of Commissioners, 14 Beacon St., Boston,  
Mass.

12 19

1  
7  
6  
3  
2  
0  
0

6701 N. Broad St.,  
Philadelphia, 26, Pa.

Oct. 3, 1944

Mr. Henry Lacey,  
Foochow, Fukien,  
Free China

My dear Mr. Lacey:-

As we have not heard from you since your letter of Mar. 30, 1944, it may be well for me to write you again regarding the Hwa Nan College funds. I hope the various funds are clear to you.

Re Appropriations:

The appropriations for Hwa Nan College originate from two sources: 1, The Woman's Division of Christian Service. That appropriation is in two parts, namely, budget for missionary support, including salaries and furlo travel, and the work budget. The former Woman's Foreign Missionary Society in 1938, stabilized the missionary support by guaranteeing salaries of nine missionaries, whether the staff equals that number or not. That guarantee still is made by the Woman's Division, and the rate per missionary is now \$900. The travel for furlo is adjusted from year to year as need arises. Under the former Woman's Foreign Missionary Society the current work budget for final year of the Society ending Oct. 1, 1940, was \$8,753.50 to cover both the college and the middle school. The same amount was continued under the Woman's Division, but for year ending May 31, 1944, the Woman's Division appropriated for "work budget" of the college \$8,155.00 and \$2,255.00 for the middle school. Income on \$38,555.00 at 3% is included in the \$8,155.00. \$1,500.00, however, is paid by the Woman's Division to the Board of Trustees in U.S.A., from the college work budget, to cover expenses in U.S.A. of the Board, and for Hwa Nan's share of the A.B.C.C.C. budget. The appropriation of the Woman's Division paid in China for Hwa Nan College is, therefore, \$6,655.00, and for the middle school, \$2,255.00. This is sent on a quarterly basis to Miss Fosnot, who, in turn, distributes the funds to the college. As Treasurer of the Board of Trustees, I send quarterly to the Woman's Division, \$5,000.00, which is likewise remitted to you through Miss Fosnot to be paid the College at full exchange. Therefore, the amount you should receive quarterly, in addition to the salaries and travel, should be \$6,663.75. The amount received through the A.B.C.C.C. varies from year to year, and the College is entitled to enough more to make up the difference on budget approved by the A.B.C.C.C. and the \$26,655.00 remitted on the quarterly basis for maintenance.

Mrs. Peel and I wrote you from the Prince George Hotel in June 1944, asking that you let us know how much more in U.S. dollars was needed to balance your budget for the college year ending March, 1944. Unfortunately I wrote a long hand letter and do not have a copy. At that time we also explained the funds held or accumulated here for Hwa Nan College. Since no request for additional cash has come, I fear you have not received our letter.

1220



Re: Permanent Funds

The Woman's Foreign Missionary Society has already turned over to the Woman's Division, the permanent funds in accordance with the plan of union; that amount is \$38,555.00 on which 3% interest is paid, which applies on the Hwa Nan College work budget as it did in the last several years under the W.F.M.S. In our letter last June 1, we told you of a grand surprise, in that from an undesignated surplus of the W.F.M.S., an additional \$32,030.30 was voted to be added to the Hwa Nan Permanent Fund, with the understanding that the interest be paid to the college as an additional amount over and above appropriation. Interest for one year ending as of May 31, 1944, was paid to me as Treasurer of the Trustees and so I am holding \$960.91 subject to your call. It gave the members of the W.F.M.S. Executive Committee great pleasure to make this new fund available for Hwa Nan College.

As of June 1, 1944, we transferred at your request, \$3,600.00, to be held by the Board of Trustees, deducting same from the quarterly remittance to the Woman's Division. As of Sept. 1, 1944, we likewise transferred \$3,600.00 to be added to the above sum. This account is known as the Field Permanent Fund; interest at 3% will be added as of May 31, 1945. For the present, the \$960.91 is in this account, also subject to interest at 3%.

Kresge Fund.

The original Kresge Fund was \$5,598.85, and was sent direct to the college from Detroit Conference W.F.M.S. Miss Hollows, at the request of the college, sent this amount back to me to hold subject to the call of the college. We allow 3% on this fund, but cannot compound the interest. The fund is now held at \$5,838.21, interest at 3% on the \$5,598.85, will be added again May 31, 1945.

Re: Building Fund

After the fire, several gifts designated for a Building Fund for the college, were received; the amount so held is now \$893.86. We allow interest on this sum and add it annually to the principal.

Re: Maintenance Fund

These are the amounts paid to the Trustees from the A.B.C.C.C. I am sure you know a large part of these funds is raised personally by Mrs. Leon Roy Peel. Every gift we receive from individuals direct, must be credited as from the A.B.C.C.C. For the year ending June 30, 1944, we received \$47,281.00. That is the most we have ever received. \$20,000.00 of this was sent you as previously mentioned. We allow 3% interest, a portion of the balances, but donot add to the principal sum.

Re: Trustees Expense Account

As previously stated the Woman's Division pays the Trustees \$375.00 on a quarterly basis from which expenses of trustees' meetings, mimeographing and secretarial help for the chairman, etc., is paid, and the Hwa Nan share of A.B.C.C.C. overhead is likewise paid.

To summarize:

The Woman's Division holds permanent funds \$38,555.00 - interest used for work budget within appropriations interest over and above appropriations

Nov 28 30 32,030.30  
Jan 28 20

1221

1  
7  
6  
3  
2  
0  
0



Trustees - holds Field Permanent Fund	\$9,160.91	- interest to be added to principal
Kresge Fund - - - -	5,838.21	- interest on \$5598.85 to accumulate
Building Fund - - - -	893.86	- interest to be added to principal
Maintenance Fund - -	<u>34,286.40</u>	- interest to accumulate
	\$50,179.38	

Perhaps I should also explain that it was thought best to hold these various funds amounting to \$50,179.38, with the Woman's Foreign Missionary Society's invested funds, since, in this way, we have more diversified investments. The W.F.M.S. invests only in bonds legal for Trust Funds under the laws of New York, New Jersey or Massachusetts. We are still able to credit interest at 3%, but the rate is subject to change if earnings should not warrant that rate. The W.F.M.S. still holds its retirement and annuity funds, also personal funds of missionaries, so that there is still a sizeable portfolio with which to hold Hwa Nan funds.

Late in August I found the \$1,400.00, balance due to be sent to Miss Fosnot for the college from the Woman's Division as of June 1, was omitted, so I sent \$2,800.00 at once to cover June 1 and Sept. 1. In re-reading your letter of March 30, I am not sure you wanted me to retain the second \$3,600.00. If not, please call it out.

We will be sending an additional \$5,000.00 to the Woman's Division from the Maintenance Fund to be remitted to Miss Fosnot with the December quarter from the Woman's Division.

I am sending you two copies of this letter, each under separate cover. If both copies reach you, it may be well to file one with the College. I also enclose a copy of letter I am writing Miss Fosnot.

Cordially yours,

Mrs. J. W. Masland,  
Treasurer

ESM:S

1222

1  
7  
6  
3  
2  
0  
0

Mary Lacy  
1938

When copying, please  
Keep separate in file.

1  
7  
6  
3  
2  
0  
0

1223

Hwa Nan College, Foochow, China.  
March 8, 1938.

As I bask here in the first sun of the season, I just fairly bubble over to tell you of all the fun I've been having while bobbing around the country, with some of the teachers from Hwa Nan visiting a group of our students who were working in Ing Tai 50 miles from here I wish you could have been along. I don't know when I've had such an education.

After our welcome with firecrackers we spent a drizzly rainy day lolling around with the girls on their bunks - sixteen of them spread out on the floor in one little room about the size of our dorm rooms. We talked voluminously, cracked watermelon seeds and ate cookies, and talked some more. They were the gayest, peppiest lot for all they had to put up with. But as they said - the more they did this sort of work, the more they felt the need of it, and the happier they were to be doing it. Oh, what work? That's right, I nearly forgot! They are visiting villages, as are all the other college and prep-school students and high school boys. They are telling the people all over the province about this P.T.S. (Present Tense Situation -!) and they are telling it through the mediums of drama, song and speech.

One day, in spite of a pouring torrent, the girls tried to make one of their assigned villages, but on finding a bridge out and a terrific flood they decided not to venture further and came dripping in several hours later soaked to the skin. Undaunted by the damp penetrating cold, they made some sort of change and proceeded to practise for the program which they were planning for the eve of the Fifteenth of the First Moon - the most important of Chinese Festivals. During intervals, they told me that on some of their visits into the homes the women couldn't understand where they'd left their children "What! You aren't married!" they'd exclaim, and then when the girls informed them they weren't even betrothed, the women thought they were headed the wrong way, sure!

But the eve of the Fifteenth dawned bright and clear and by the light of the Dragon Moon we made our way across the swollen river to a little village tucked away in the hills. All their programs were given in temples - for these people, drama is very closely related to their religion, much as the mystery plays, I imagine; and, consequently every temple has its stage, built on the order of the Elizabethan Theatres, though ever so much more quaint and artistic.

The place was lit with hundreds of red candles casting forests of shadows on the colony of goddesses which lined the temple walls. Some of these goddesses were nursing babies, some carrying babies, some leading them by the hand, and some pregnant, but into every nook and cranny were stuck real and artificial flowers. These flowers and candles were put there by women who want sons during the coming year. Seated on her throne and Goddess of them all, sits the "Honored One" who has granted the prayers - and at her inestimable feet lie the offerings of baby shoes and socks. About midnight hundreds of "young hopefuls" accompanied by an elder woman, or one with a "good name" jam the place to receive blessing of the goddesses. These blessings are the flowers which can only be wrested from the goddesses by these elder women. If the mothers wear these flowers in their hair all year, their prayers are supposed to

1224



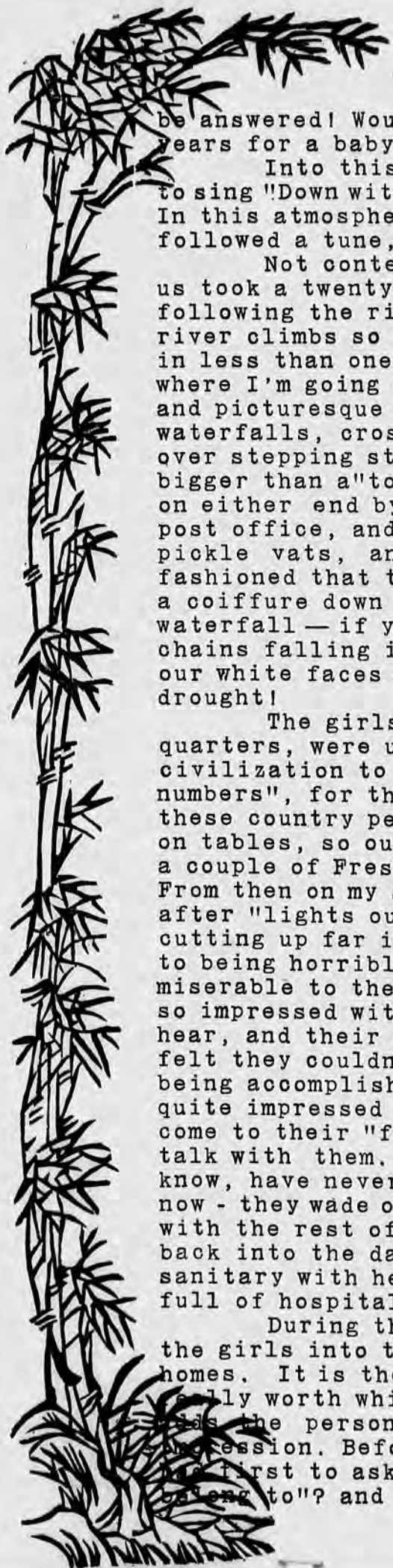
be answered! Wouldn't it be fun? And to think I prayed four years for a baby sister!

Into this atmosphere our girls taught the eager crowds to sing "Down with Japan, clean out the traitors, China forever!" In this atmosphere, men, women, and children who had never followed a tune, now lustily re-echoed the songs.

Not content with visiting this group alone, three of us took a twenty-five mile hike farther inland, more or less following the river to the station of our other group. The river climbs so that it takes six days by boat, but we made it in less than one. If any of you ever drop in to see me that's where I'm going to take you for a taste of China's scenic beauty and picturesque life. We climbed mountains, slid along under waterfalls, crossed quaint little camel back bridges, hopped over stepping stones, and finally entered a village not much bigger than a "toy one." There was one little street hemmed in on either end by a magistrate's yamen and the church-school—post office, and stitched along the sides with tiny food shops, pickle vats, and straw sandal shops. The women were so old-fashioned that they wore funny double embroidered sleeves and a coiffure down their neck that looked like an inverted waterfall—if you get what I mean—with oodles of fancy silver chains falling in cascades and dripping off the ends. We and our white faces nearly scared one of these waterfalls into a drought!

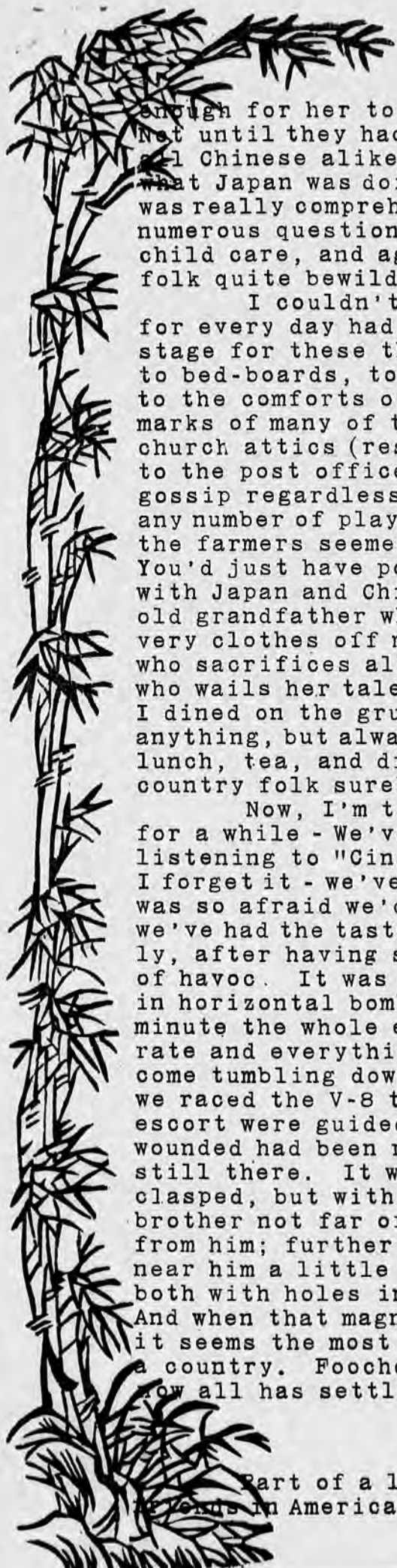
The girls here, though sleeping in more spacious quarters, were utterly isolated. We were the first bit of civilization to them for weeks, making them feel more like "back numbers", for they'd even started to take on the brogue of these country people! Here they had the comforts of sleeping on tables, so out came my bedding-roll and with the help of a couple of Freshmen, I was well perched on four school tables! From then on my sleeping adventures began. We had more fun after "lights out" (snuffed candles? brought from Foochow) cutting up far into the night. The girls finally confessed to being horribly discouraged, at times, and often they were miserable to the point of tears, yet at the same time they were so impressed with the poverty of the people, their eagerness to hear, and their total ignorance of things vital that the girls felt they couldn't give too much to those people. Far more is being accomplished than just propaganda, for the people are quite impressed by the fact that an educated person would ever come to their "forgotten paradise" - so to speak - to live and talk with them. So was I! Some of those college girls I know, have never had to lift a finger for themselves, and yet now - they wade out into the river and wash their clothes, along with the rest of the village women, on the rocks, or, they go back into the dark hovels to show some mother how to be more sanitary with her tea cups - they are always so cordial and so full of hospitality that one hates to refuse their tea!

During the work in one of these villages, I went with the girls into the courtyards and into the kitchens of the homes. It is the woman-to-woman contact that makes the visits really worth while for they are all so eager to hear and it adds the personal touch which makes for a more lasting impression. Before the girls can begin with their talk they are first to ask the question, "Do you know what Country you belong to?" and one woman after another had no idea. It was



1  
7  
6  
3  
2  
0  
0

1225



enough for her to know that she belonged to Ing Tai Connty! Not until they had explained what China was and that they were all Chinese alike—could they begin to tell about Japan and what Japan was doing to their country, about one-half of which was really comprehended, though they did make the effort and asked numerous questions. The girls then sandwiched in health talks, child care, and agricultural suggestions and left the poor folk quite bewildered, but more alert.

I couldn't begin to tell you everything that happened for every day had a new adventure and every village was a new stage for these thrills. I slept on everything from tables to bed-boards, to rattan beds, to the floor, and then elevated to the comforts of a canvas cot - and I still bear the trade marks of many of those "snoozes"! We slept in everything from church attics (reserved for "church mice" only) to school rooms, to the post office where the men strolled in for their tea and gossip regardless of the stage of one's toilette! We saw any number of plays and acted as "stooges" in the crowds when the farmers seemed not to grasp the technique of singing. You'd just have popped to have seen me lustily singing. "Down with Japan and China forever" — etc. trying to convince some old grandfather who gaped in awe and amusement! I took the very clothes off my back to supply, first - a wealthy "gal" who sacrifices all for her country and then - to a poor refugee who wails her tale of servitude to Japan. And all this time I dined on the grub of the moment which may have been most anything, but always rice in some form or another for breakfast, lunch, tea, and dinner! It was always good, though, for those country folk surely know how to cook!

Now, I'm trying to get accustomed to living civilized for a while - We've just heard Big Ben from London and now, I'm listening to "Cinama" organ music from Berlin - But Oh! Before I forget it - we've been bombed! Isn't that just too thrilling! I was so afraid we'd miss out on that excitement, but now - that we've had the taste of 20 or more bombs, I'm satisfied Especially, after having seen the tragedy caused by these few minutes of havoc. It was done by six big power planes which specialize in horizontal bombing - quite surprised us all - for the next minute the whole earth was rumbling and cracking at a terrific rate and everything was shaking so that I thought all would come tumbling down any minute. Soon after the raid was over we raced the V-8 to the scene of action and under special escort were guided to the field of destruction. The twenty-five wounded had been rushed to the hospitals, but the dead were still there. It was horrible - little sisters with hands still clasped, but with their heads half blown off; the little brother not far off, but with his feet lying some distance from him; further on was a man with his legs blown off; and near him a little girl who was carrying her baby sister, but both with holes in the head and little bodies - and so on! And when that magnified several thousand times means our "war", it seems the most inhumanly, cruel and maniacal slaughter of a country. Foochow was pretty upset for several days, but now all has settled back to normal, again.

Part of a letter written by Mary Lacy to her college friends in America.



Betty S. Ling  
1934-1943

When copying, please  
Keep separate in file.

1  
7  
6  
3  
2  
0  
0

1227



# WESTMINSTER CHOIR SCHOOL

PRINCETON, NEW JERSEY

OFFICE OF THE REGISTRAR

[1]

OFFICIAL TRANSCRIPT OF THE RECORD OF Betty Simpson Ling

ADDRESS .....

ADMITTED ..... WITHDREW .....

GRADUATED ..... DEGREE .....

ENTRANCE CREDITS FROM ..... COPY .....

ENTRANCE CREDITS	COLLEGE CREDITS							
	TITLE OF COURSE	No.	HOURS CREDIT	GRADE	TITLE OF COURSE	No.	HOURS CREDIT	GRADE
	This is a copy of the transcript sent from the Morningside College, Sioux City, Iowa certifying that Miss Ling was a student in Hwa Nan College for three years, from September 1934 to June 1937.							
	<u>Year 1934-35</u>							
HISTORY	Ancient Literature	6		B	Hist. & App. Pianoforte		4	B
AMERICAN	Introduction to Lit.	6		A	Chorus Singing			A-
ANCIENT	Composition	6		B	Phy. Education			B-
ENGLISH	Zoology	4		B				C
MEDIAEVAL AND MODERN	Elements of Botany	4		B	<u>Year 1936-37</u>			
CIVICS	Gen. Inorganic Chem.	10		B	Educational Psych.		3	B
	Chorus Singing			A	Adolescent Psych.		3	A
LANGUAGE	Gymn.			C	Types of Poetry		3	B
ENGLISH	Military Nursing				Eng. Idioms		3	A
FRENCH	<u>Year 1935-36</u>							
GERMAN	Mod. Literature	6		B-	Prob. of Admin. in Secondary School		3	B
LATIN	Biography	3		B	Tests & Measurement		2	D
SPANISH	Readings in Eng. & Am. Literature	3		B	Teach. Sec. School Music		2	A
MATHEMATICS	Gen. Psychology	3		B	Adv. Composition		3	A
ALGEBRA	Introduction to Ed.	3		B	Med. History		3	A
ELEMENTARY	Hist. Intro. to Civil.	6		B	Vocal Lessons			B
INTERMEDIATE	Modern China	3		C/	Dip. Hist. Of Europe		3	A
ADVANCED	Princ. of Kuomingtang	2		A	Teach. Ele. School Music		2	B
GEOMETRY	Anc. Hist. of China	3		B	Pianoforte			A
PLANE	Argumentation	3		B	Chorus Singing			A
SOLID	Princ. of Teach. Sec. School	3		B	Phy. Education			B
TRIGONOMETRY								
SCIENCE, GEN.								
BIOLOGY								
BOTANY								
CHEMISTRY								
PHYSICS								
PHYSIOGRAPHY								
ZOOLOGY								
MUSIC								
TOTAL						TOTAL	108	

ADVANCED CREDIT GRANTED

Grading System: A—Excellent; B—Good; C—Average; D—Passing; E—Condition; F—Failure; Inc.—Incomplete.

I hereby certify that this is an accurate transcript and that this student is granted honorable dismissal.

*Rhea B. Williamson*  
Registrar

1228

# WESTMINSTER CHOIR SCHOOL

[2]

PRINCETON, NEW JERSEY

OFFICE OF THE REGISTRAR

OFFICIAL TRANSCRIPT OF THE RECORD OF Betty Simpson Ling

ADDRESS .....

ADMITTED ..... WITHDREW .....

GRADUATED ..... DEGREE .....

ENTRANCE CREDITS FROM ..... COPY .....

ENTRANCE CREDITS		COLLEGE CREDITS							
		TITLE OF COURSE	No.	HOURS CREDIT	GRADE	TITLE OF COURSE	No.	HOURS CREDIT	GRADE
HISTORY		This is a copy of the transcript from Morningside College, Sioux City, Iowa.							
AMERICAN ANCIENT ENGLISH MEDIAEVAL AND MODERN CIVICS		<u>Year 1937-38</u>				Hist. of Music		2	
		Theory		4	A	Counterpoint		2	
		School Music		2	B	German		3	
LANGUAGE		Nor. Inst.		2	A	Choir Recital		1	
ENGLISH		Piano		2	B	Education Pract. Teach.		2	
FRENCH		Voice		2	B	In good standing.			
GERMAN		Choir		1					
LATIN		Recitals		2		<u>2nd Sem. 1939-40</u>			
SPANISH		Psychology		3	A	Theory (counterpoint)		2	C
MATHEMATICS		<u>Year 1938-39</u>				Theory (Form & Analy)		2	B
ALGEBRA		School Music		4	A	German (Elementary)		3	A
ELEMENTARY		Theory		8	A	Piano		3	A
INTERMEDIATE		Instrumental		2	A	Music (Hist. of)		2	A
ADVANCED		Voice		4	A-	Voice		2	B
GEOMETRY		Piano		6	A	Education Pract. Teach.		1	B
PLANE		Recitals		1					
SOLID		School Music Pract. Teach.		1	B	The degree Bachelor of School Music was conferred upon Miss Betty Simpson Ling by Morningside College on June 4, 1940.			
TRIGONOMETRY		Violin		2	B				
SCIENCE, GEN.		School Music Ins. Meth.		2	A				
BIOLOGY		Choir		1/2					
BOTANY		<u>Current Registration</u>							
CHEMISTRY		Voice		2					
PHYSICS		Piano		3					
PHYSIOGRAPHY		School Music		2					
ZOOLOGY		Form & Analysis		2					
MUSIC									
TOTAL							TOTAL		

ADVANCED CREDIT GRANTED

Grading System: A—Excellent; B—Good; C—Average; D—Passing; E—Condition; F—Failure; Inc.—Incomplete.

I hereby certify that this is an accurate transcript and that this student is granted honorable dismissal.

*Rhea B. Williamson*  
Registrar

1229

1  
7  
6  
3  
2  
0  
0

# WESTMINSTER CHOIR SCHOOL

PRINCETON, NEW JERSEY

OFFICE OF THE REGISTRAR

[3]

OFFICIAL TRANSCRIPT OF THE RECORD OF Betty Simpson Ling  
 ADDRESS Foochow, China  
 ADMITTED Sept. 24, 1940 WITHDREW \_\_\_\_\_  
 GRADUATED \_\_\_\_\_ DEGREE \_\_\_\_\_  
 ENTRANCE CREDITS FROM Morningside College

ENTRANCE CREDITS	COLLEGE CREDITS							
	TITLE OF COURSE	No.	HOURS CREDIT	GRADE	TITLE OF COURSE	No.	HOURS CREDIT	GRADE
	<u>Year 1940-41</u>							
HISTORY	English	Cr.	6		/			
AMERICAN	Phil. of Music	Cr.	4					
ANCIENT	Psychology	Cr.	4					
ENGLISH	Theory I	Cr.	10					
MEDIAEVAL	Theory II	Cr.	10					
AND MODERN	Hist. of Music	Cr.	4					
CIVICS	Literature	Cr.	4					
	Education	Cr.	6					
LANGUAGE	German	Cr.	4					
ENGLISH	Conducting II		2	B				
FRENCH	Piano		2	A-				
GERMAN	Voice		4	B+				
LATIN	Hymnology		4	A				
SPANISH	Conducting III		4	B				
	Dramatics		6	A-				
MATHEMATICS	Vocal Methods III		4	B				
ALGEBRA	Musicology Seminar			S				
ELEMENTARY	<u>Year 1941-42</u>							
INTERMEDIATE	1st Sem.							
ADVANCED	Conducting IV		2	S				
GEOMETRY	Vocal Methods IV		2	S				
PLANE	Voice		3	B+				
SOLID								
TRIGONOMETRY								
SCIENCE, GEN.								
BIOLOGY								
BOTANY								
CHEMISTRY								
PHYSICS								
PHYSIOGRAPHY								
ZOOLOGY								
MUSIC								
TOTAL					TOTAL			

ADVANCED CREDIT GRANTED

S is Satisfactory

Grading System: A—Excellent; B—Good; C—Average; D—Passing; E—Condition; F—Failure; Inc.—Incomplete.

I hereby certify that this is an accurate transcript and that this student is granted honorable dismissal.

*Rhea B. Williamson*  
Registrar

1230

1763200



THE COLLEGES  
FUKIEN CHRISTIAN UNIVERSITY  
GINLING COLLEGE  
HANGCHOW CHRISTIAN COLLEGE  
HUA CHUNG COLLEGE  
HWA NAN COLLEGE  
LINGNAN UNIVERSITY  
UNIVERSITY OF NANKING  
UNIVERSITY OF SHANGHAI  
SHANTUNG CHRISTIAN UNIVERSITY  
SOOCHOW UNIVERSITY  
WEST CHINA UNION UNIVERSITY  
YENCHING UNIVERSITY  
TEL. WATKINS 9-8703  
CABLE: ARCHICOL

Associated Boards  
*for*  
Christian Colleges in China

中國基督教大學  
聯合董事會

150 FIFTH AVENUE, NEW YORK, N. Y.

OFFICERS OF THE ASSOCIATED BOARDS  
PRESIDENT  
J. W. DECKER  
VICE PRESIDENTS  
J. H. ARNUP  
ARTHUR V. DAVIS  
EDWARD H. HUME  
SALLIE LOU MACKINNON  
MILDRED H. MCAFEE  
LLOYD S. RULAND  
TREASURER  
E. M. MCBRIER  
ACTING EXEC. SEC'Y AND  
ASSOCIATE TREASURER  
C. A. EVANS  
SECRETARIES  
OLIVER J. CALDWELL  
CHARLES H. CORBETT  
MRS. W. PLUMER MILLS

June 15, 1943

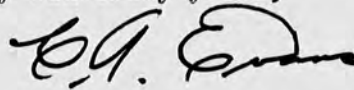
Miss Betty S. Ling  
Westminster Choir College  
Princeton, New Jersey

Dear Miss Ling:

Miss MacKinnon has sent me a copy of your letter regarding the scholarship needs for 1943-44. I have read this with great interest and talked with Mrs. Peel regarding the situation and remember the discussion at the meeting of the Hwa Nan Board.

While I am not in a position to promise any definite amount, certainly the Associated Boards should in some manner render some assistance toward your budget for 1943-44. I do not think it possible to assume the entire requirements, but I am quite sure that there will be a disposition to grant 50% or around \$350.00, as that has been the average grant. However, the Committee will have final say and your request will be presented at its next meeting.

Very sincerely yours,



C. A. EVANS

CAE/B

PARTICIPATING WITH UNITED CHINA RELIEF

1231

1  
7  
6  
3  
2  
0  
0

June 29, 1942

Miss Betty Ling  
31 Jefferson Road  
Princeton, New Jersey

My dear Miss Ling:

The Associated Boards' Committee on Faculty Scholarships has given consideration to a request from Mrs. L. R. Peel, asking for assistance for you in the year 1942-43. The Committee has taken action and made a grant of \$400 to you which will be available any time during the school year of 1942-43 as you find it desirable to use it.

We hope that this grant will assist you in completing your work at Princeton.

Sincerely yours,

Jip:d

1232

1  
7  
6  
3  
2  
0  
0

RECEIVED  
UNIVERSITIES  
JUN 5 1942  
JOHN D. ...

1  
7  
6  
3  
2  
0  
0

1233



Camp Adventure  
Lake Junaluska  
North Carolina  
July 5, 1942

file

Mr. Joseph D. Parker  
150 Fifth Ave.  
New York, N. Y.

My dear Mr. Parker:

Your letter of June 29 reached me yesterday. I wish to express my sincere appreciation for the grant of this scholarship. I am hoping that I shall prove worthy of the confidence that is placed in me.

I will write you again before school opens.

Very gratefully yours,  
Betty S. Ling

1  
7  
6  
3  
2  
0  
0

*Faint, illegible handwriting at the top of the page.*

*Faint, illegible handwriting in the middle of the page.*

*Faint, illegible handwriting at the bottom of the page.*

RECEIVED  
UNIVERSITIES  
JUL 7 1942  
JOINT OFFICE  
*AR*

1  
7  
6  
3  
2  
0  
0

1235



ELIZABETH LING

[1]

LAKE JUNALUSKA, N. C.

July 6, 1942

ack  
7/14  
EJC

Dear Mr. Caldwell,

It has been a long time since the Conference at Urbana. I have intended to write and thank you for giving my name to the China Institute in America. I do sincerely appreciate the interest you take in my problems.

Four weeks of camps or assembly have passed. The young people have given \$90 toward China Relief. The staff felt that the distinctive achievement of a week's camp was a better understanding toward people of the so-called enemy countries. After this week I shall be at Camp Adventure

1236



[2]  
until August 23 when I shall  
return to Princeton.

Aunt Jane is here for the week.  
She received an air-mail letter  
from Miss Abel in June. It was  
mailed on March 27 and cost  
\$10 mex. Miss Abel said they  
had to increase the salaries  
of the preachers, teachers, and  
Bible Women on account of  
the higher <sup>cost of</sup> living.

Last Spring during our Spring  
vacation I spoke for the Profes-  
sional and Business Women's  
Club at Camden. They gave \$25  
to the United China Relief. The  
American people are doing  
a great deal for the Chinese.  
How we wish that a stop of  
the sale of war materials to  
Japan was put enforced a  
couple of years ago.



ELIZABETH LING

[3]

LAKE JUNALUSKA, N. C.

Mr. Parker wrote that the Associated Board of the Christian Colleges in China has granted me a scholarship of \$400 for the year 1942-1943. I am sure that you have helped to bring this about. I am hoping that I shall prove worthy of the trust that is placed upon me.

Mr. Bliss Wiant is to be <sup>concert of</sup> here to give a Chinese music on Friday. I am looking forward to seeing and hearing him. With best wishes for a pleasant summer, I am

Very gratefully yours,  
Betty Ling

P.S. No desk  
at camp.

1238

ELIZABETH LING



LAKE JUNALUSKA, N. C.

*Faint, illegible handwritten text.*

*Faint, illegible handwritten text.*

RECEIVED  
UNIVERSITIES  
7 JUL 14 1942  
JOINT OFFICE

1  
7  
6  
3  
2  
0  
0

1239



Camp Innabak  
R. D. Spring City, Pa.  
July 7, 1943

Mr. C. A. Evans  
New York, N. Y.

Dear Mr. Evans:

It was a real pleasure to meet you and Mrs. Evans personally in New York when President Wu was speaking to the group.

As summer comes, I know you are very busy working out various problems concerning the Christian Colleges in China. If your time permits, I will greatly appreciate hearing from you in regard to a possibility of my receiving a scholarship for the school year of 1943-1944. After July 07 please address me in care of the Methodist Youth Institute Bethesda, Ohio.

The young people in North Carolina have given most generously in the three weeks that I was with them. I have sent in \$85 for Methodist Overseas' China Relief and \$70 for rebuilding Hwa Nan's Main Hall. With best wishes for a pleasant summer, I am

Very sincerely, Betty Ling

Camp Grounds  
R. B. Spring City, Pa.  
July 1, 1943

Mr. C. E. Brown  
New York City

Dear Mr. Brown:

I have your letter of June 24, 1943, regarding the  
rental of the camp grounds for the summer of 1943.  
I am sorry that I cannot give you a more definite  
answer at this time, but the matter is being  
considered by the Board of Directors.

I will be glad to discuss the matter with you  
if you wish. Please call me at the office or  
write to me at the address given above.  
Very sincerely,  
R. B. Spring

RECEIVED  
UNIVERSITIES  
JUL 9 1943  
JOINT OFFICE

176000

1241

July 25, 1943

Miss S. L. MacKinnon  
150 Fifth Ave.  
New York, New York

Dear Miss MacKinnon:

When I was in Hwa Nan College, 1933-1937, there was no music department in Hwa Nan. Therefore I majored in Education and minored in English and History. I took piano as an extra-curricular study. Though I was interested in music I never thought I had enough music background to major in it or to take it as life work.

A School Music course was suggested for my study in America. Piano was my major while I was in Morningside College, 1938-1940, as it was the only course I had some degree of training previous to my arrival in this country.

At the time of my graduation from Morningside it was not possible for me to return to Hwa Nan and opportunity was opened for further training at Westminster Choir College. I changed my major from piano to voice and took choir methods because I felt that I could better serve Hwa Nan and because for the first time I found that it was possible for me to learn to sing and be a voice teacher. There is a great need for voice teachers in China, especially in Fukien province. In Hwa Nan, for example, the three music teachers in the department are all piano majors. There is no trained voice teacher to take care of the vocal work. I hope to be able to fill this need in Hwa Nan on my return.

I was told that a Master's degree is necessary in order to teach in a college. Therefore, I had to take two foreign languages, Theory, and do research in the field of Musicology (History of Music) to meet the requirements for the degree, as Westminster does not grant a Master's degree in either piano or voice.

I am sure that your staff realizes that in teaching music, knowing the theory and principles is not sufficient. One cannot give a student an assignment and expect her to work it out by herself. One has to be able to show her how a piece is supposed to sound like or how a tone should be produced. I need this year's study in applied music under guidance for I am not teaching in primary school when I return to China but am having to teach college and high school students and help them teach small children. There is now a National School of Music in Fukien and our church school must be able to do as good if not better work.

Westminster Choir College is a new school. It does not have a wealth of endowment fund as most older colleges have. Its budget is maintained by students' tuition. Last year the men students were

1242



constantly called away to the armed forces, our school suffered a deficit of \$30,000. Therefore they are not able to grant tuition scholarships. I do not have to study at Westminster except that it has fine methods of teaching voice. Since I made improvement under a certain method, it may waste time in changing to another method and getting adjusted all over again for just a few school months. That is why I have not tried applying for a scholarship in another school.

Very sincerely yours,

Betty Ling

1  
7  
6  
3  
2  
0  
0

1244

September 25, 1943

Miss Betty S. Ling  
Westminster Choir College  
Princeton, New Jersey

Dear Miss Ling:

It gives me great pleasure to inform you that the Special Committee on Scholarships has approved \$350.00 toward your expenses for 1943-44.

I am also writing to Miss MacKinnon to let her know that this appropriation is available.

Very sincerely yours,

C. A. EVANS

CAE/B

cc: Miss MacKinnon  
Mrs. Peel  
Accounting Office

1245

1  
7  
6  
3  
2  
0  
0

RECEIVED  
UNIVERSITIES  
SEP 27 1943  
JOINT OFFICE

1  
7  
6  
3  
2  
0  
0

1246



Westminster Choir College  
Princeton, New Jersey  
September 27, 1943

Mr. C. A. Evans  
150 Fifth Ave.  
New York 11, N.Y.

9/27/43  
\$  
OK 350.00

Dear Mr. Evans:

It was certainly a good news to hear that the Committee has consented to grant me the scholarship. I am praying and planning to make this year worthwhile the privilege and opportunity that have been given me. This will be the last year that I shall be on the receiving end.

If it is convenient for you, could you send me the entire grant for the year, 1943-1944, \$350 this month? Then I shall not need to disturb you again at the end of January.

Very sincerely yours,  
Betty Lutz

Paid  
9/28/43  
20.17485  
350.00

Westminster Choir College  
Princeton, New Jersey  
September 27, 1943

Mr. C. A. Evans  
180 Fifth Ave  
New York N. Y.

Dear Mr. Evans

The Committee on the  
University of the South  
has been very interested  
in your work and has  
been planning to speak  
to you at the University  
of the South in the  
near future. It has  
been our intention that  
you will be the last  
speaker at the end of  
January. We are  
very sincerely yours,  
Betty J. [unclear]

RECEIVED  
UNIVERSITIES  
SEP 29 1943  
JOINT OFFICE

1248

1737200

September 28, 1943

Miss Betty Ling  
Westminster Choir College  
Princeton, New Jersey

Dear Miss Ling:

Responding to your request of September 27th, I am enclosing check herewith covering the entire appropriation of \$350.00 for 1943-44 as representing Scholarship Grant to June 30, 1944.

With every good wish to you, I am

Very sincerely yours,

C. A. EVANS

CAE/B  
ENC.

1  
7  
6  
3  
2  
0  
0

1249



UNIVERSITIES  
SEP 29 1943  
JOINT OFFICE

1  
7  
6  
3  
2  
0  
0

1250

Westminster Choir College  
Princeton, New Jersey  
September 29, 1943

file  
9/30/43

Dear Mr. Evans:

This is to thank you for your  
prompt reply and to acknowledge  
the receipt of the scholarship grant  
of \$350.

Very sincerely,  
Betty King

1  
7  
6  
3  
2  
0  
0

Westminster Choir College  
Princeton, New Jersey  
September 29, 1943

Dear Mr. Evans

It is to thank you for your  
reply and to acknowledge  
the receipt of the check for grant

Very sincerely,  
Betty King

RECEIVED  
UNIVERSITIES  
SEP 30 1943  
JOINT OFFICE

\$4320

1763200

1252



Mrs. F. J. McConnell  
1933-1935

Please keep separate  
in file when copying

1  
7  
6  
3  
2  
0  
0

1253

*Hwa Nan College* *facts*

ASSOCIATED  
BOARDS

INDEXED

November 15, 1933

Mrs. F. J. McConnell  
150 Fifth Avenue  
New York City

My dear Mrs. McConnell:

In reply to your inquiries as to the relationship between the board of trustees of Hwa Nan College and the Associated Boards for Christian Colleges, I will try to summarize the facts as briefly as possible.

Article 3 of the constitution of the Associated Boards defining the membership of the group is attached hereto. You will note that participation by the board of trustees of any of our China Colleges, or by whatever group represents the institution here in North America, is purely a matter of voluntary action. At the time the Associated Boards was organized in 1932, invitations were sent to the boards and other groups representing all our China Colleges to participate in the organization. Most of them agreed to do so, but in the case of three institutions, no action has been taken on this invitation. These institutions are St. John's University, the University of Shanghai and Hwa Nan College.

While it would be necessary for the Associated Boards to approve the admission of any board of trustees not now participating, I am quite sure that everyone would be happy to welcome the Hwa Nan group to our midst.

It should be kept clearly in mind that the Associated Boards is a voluntary association of the North American groups representing these China Colleges. A college may participate in the Council of Higher Education in Shanghai without its trustees in North America participating in the Associated Boards. This is actually the situation in at least two colleges. On the other hand, it would be quite possible for the board of trustees of one of our colleges to participate in the Associated Boards even though the college itself did not participate in the Council of Higher Education.

While agreement to abide by the correlated program for Christian Colleges in China is one of the immediate and important steps in our operation, by its agreement to participate in the Associated Boards a group does not automatically bind itself to abide by the correlated program as it is now drafted. We hope that each institution will agree that it will abide by this correlated program, but that is quite a separate matter.

1254

1  
7  
6  
3  
2  
0  
0

November 16, 1933

I understand that the board of trustees of Hwa Nan College is not actually an incorporated board of trustees, but is made up of the members of the Woman's Foreign Missionary Society of the Methodist Episcopal Church together with some individuals who are coopted for their special interest in Hwa Nan. If this is true, your participation will be brought about by the following steps:-

1. By action of the Womens Foreign Missionary Society of the Methodist Episcopal Church in which it elects to have representatives of Hwa Nan College participate in the Associated Boards.
2. Action by the Associated Boards accepting these representatives of Hwa Nan College to membership on the Associated Boards.
3. Agreement by the WFMS and the Associated Boards as to the number and personnel of the representation for Hwa Nan College.

We will be very happy to give any further information we can supply, or to render any other assistance possible.

BAG:F

Very sincerely yours,

B A GARSIDE

1  
7  
6  
3  
2  
0  
0

1255



4/28/29 WMS. in EA  
and Home wa 24.0

WOMAN'S FOREIGN MISSIONARY SOCIETY  
OF THE  
METHODIST EPISCOPAL CHURCH  
ROOM 710, 150 FIFTH AVENUE, NEW YORK, N. Y.

PRESIDENT, MRS. THOMAS NICHOLSON  
MT. VERNON, IOWA

VICE-PRESIDENTS  
MRS. F. F. LINDSAY  
25 SEYMOUR AVENUE S. E., MINNEAPOLIS, MINN.  
MRS. DORR DIEFENDORF  
45 PROSPECT STREET, MADISON, N. J.

VICE-PRESIDENTS AT LARGE  
MRS. FRANCIS J. MCCONNELL  
ROOM 710, 150 FIFTH AVENUE, NEW YORK, N. Y.  
MRS. CHARLES L. MEAD  
1839 YORK STREET, DENVER, COL.

RECORDING SECRETARY, MRS. H. E. WOOLEVER  
3511 RODMAN STREET, N. W., WASHINGTON, D. C.

TREASURER, MISS FLORENCE HOOPER  
30 MARYLAND LIFE BUILDING, BALTIMORE, MD.



ASSOCIATED  
BOARDS

SECRETARY, GENERAL OFFICE  
MISS AMY G. LEWIS  
ROOM 710, 150 FIFTH AVENUE, NEW YORK, N. Y.  
CABLE ADDRESS, FORMIS, NEW YORK  
TELEPHONE WATKINS 9-7090

SECRETARY, FOREIGN DEPARTMENT  
MRS. LEWIS L. TOWNLEY  
323 BEECH AVENUE, WYOMING, OHIO

SECRETARY, HOME DEPARTMENT  
MRS. F. H. SHEETS  
1930 SHERIDAN ROAD, EVANSTON, ILL.

January 25, 1934  
Act 2/7/34

Mr. B. A. Garside  
150 Fifth Avenue  
New York, N. Y.

My dear Mr. Garside:

I have had considerable correspondence with Mrs. Peel and Mrs. Nicholson regarding Hwa Nan's participation in the Associated Boards. I think you had better send the final statement of the account still due under the old Four C's.

Mrs. Nicholson seemed to understand that the deficit was on the present Associated Boards.

Very sincerely yours,  
*Francis J. McConnell*  
Mrs. Francis J. McConnell

McC:feb

1931-2 - 104.19

1256

1  
7  
6  
3  
2  
0  
0

ASSOCIATED  
B

INDEXED

February 7, 1934

Mrs. F. J. McConnell  
150 Fifth Avenue  
New York, New York

My dear Mrs. McCormell:

Let me acknowledge receipt of your letter of January 25th regarding Hwa Nan's participation in the Associated Boards.

As I have already stated to you verbally, at the time the Associated Boards was organized in the autumn of 1932 we carried over a deficit caused by the fact that several of our colleges participating in the former organization of the Committee for Christian Colleges in China had not paid up all of their pro rata shares of the expenses of the organization. We have now been able to reduce this old deficit, due to collections from most of the organizations, to a total of \$211.95. Of this deficit, \$104.19 is the amount which we requested Hwa Nan College to contribute to the expenses of the Committee for Christian Colleges in China for the fiscal year 1931-32. Since Hwa Nan has not elected to join the Associated Boards we have, of course, not made any requests to you for financial assistance for the expenses since that date.

We would, of course, be very grateful if Hwa Nan could find it possible to take care of this \$104.19 for 1931-32, regardless of whatever decision they may ultimately reach as to participation in the Associated Boards. According to our records, the last contribution we have received from Hwa Nan toward these expenses of our cooperative undertaking was a check for \$211.00 received on June 28, 1929 from the Woman's Foreign Missionary Society of the Methodist Episcopal Church covering Hwa Nan's pro rata share for the year 1928-29. We were able to reduce our expenditures to such a point that the funds received during 1928-29 were spread over the years 1929-30, 1930-31 also.

Except for the deficit of \$211.96 mentioned above our Associated Boards did not carry forward any old debts at the time of our organization at the end of 1932. We have, of course, certain obligations which we are trying to meet this year, but I believe that they will be pretty well cleared off by the close of the fiscal year on June 30th, so that any additional organization which may elect to join the group will not be assuming any share of outstanding indebtedness.

I am sending you two extra copies of this letter in case you wish to hand them to Mrs. Peel and Mrs. Nicholson.

Very sincerely yours,

B A GARSIDE

BAG:MP

1257

1  
7  
6  
3  
2  
0  
0

*Hwa Nan College*

ASSOCIATED  
BOARDS

September 27, 1934

Mrs. F. J. McConnell  
150 Fifth Avenue  
New York City

My dear Mrs. McConnell:

We have received from Dr. Ernest E. Cole of the University of the State of New York a letter with reads in part as follows:-

"I am glad to advise you that the Board of Regents at its meeting held on September 21, 1934, formally voted to grant absolute charters to the Woman's College of South China (Hwa Nan) and The University of Nanking, to replace the provisional charters which these institutions now hold. These charters will be engrossed and forwarded to you in regular course. Since the fee for issuance of a charter is \$10.00 we shall be pleased to receive from you at your convenience a check in the amount of \$20.00 to cover same."

We have written Dr. Cole telling him that our office does not have anything to do with the Hwa Nan accounts and that he should write to you regarding this matter since Hwa Nan is not a member of the Associated Boards.

Very cordially yours,

MP

1258

1  
7  
6  
3  
2  
0  
0



Hwa Nan

over

ASSOCIATED  
BOARDS

October 8, 1934

Mrs. F. J. McConnell  
150 Fifth Avenue  
New York, N. Y.

Dear Mrs. McConnell:

In response to your request for a suggestion as to the form of resolution that might be adopted by the group in the Woman's Foreign Missionary Society of the Methodist Episcopal Church acting as Trustees of Hwa Nan College, I would suggest that you take action along the following general line.

"Resolved that the Board of Trustees of Hwa Nan College make application for admission as one of the units participating in the Associated Boards; it being understood that if admitted this Board of Trustees will cooperate to the full extent of its ability in carrying out the purpose of the Associated Boards 'to advance, in a co-operative manner, the interests of Christian higher education in China'."

You have asked me to give as definite information as I could as to the possible financial responsibilities that the Board of Trustees of Hwa Nan College would be asked to assume as a member of the Associated Boards. It is extremely difficult to give any concrete figures until we know more definitely just what would be involved. The principle under which all the work of the Associated Boards is carried on is that of rendering to each cooperating institution whatever service that institution may desire, and doing it upon an actual cost basis. These costs we are always striving to keep reduced to the very minimum. The three types of service we might render would be secretarial, fiduciary and promotional. The secretarial work we are doing for most of the participating institutions consists of keeping records of Boards of Trustees, carrying on correspondence between the home base and the field, and doing all the work involved in keeping our Board of Trustees in close touch with the institution in China which it is serving. Our fiduciary service consists of keeping accounts, receiving and disbursing both current and capital funds and making and supervising the investment of capital funds. The promotional service we are now beginning to render is that of assisting each institution within the Associated Boards, both through its individual efforts and through the

1  
7  
6  
3  
2  
0  
0

1259



10/9/34

united efforts of the entire group, to secure support for whatever financial objectives are approved by the Associated Boards as in line with the Correlated Program for Christian Higher Education in China.

Perhaps Ginling College would offer the nearest analogy to what our relationship to Hwa Nan College might be. For the year 1933-34 Ginling's pro rata share in the general organizational expenses of the Associated Boards was \$67.85 and its share in our promotional program was \$116.72. We have not made any specific charge to Ginling for secretarial or fiduciary services because these have been handled almost entirely by Mr. Russell Carter and Miss Florence Tyler. In the Yenching College for Women, we are carrying on all of the fiduciary responsibilities, and a part of the secretarial work at a cost to the Committee last year of \$700.00.

I hope that the above information will give you a fairly clear picture of just what the situation would be. The goal for which we are all working is that of a unified program of Christian higher education in China. Each of our China colleges has its own proper place in this program, if we could only find it, but the interest of any single institution must necessarily be secondary to the larger interests of the entire program.

Very sincerely yours,

B A GARSIDE

BAG.A

1260

1  
7  
6  
3  
2  
0  
0

*Jwa Nov*

ASSOCIATED  
BOARDS

October 8, 1934

Mrs. F. J. McConnell  
460 Riverside Drive  
New York City

My dear Mrs. McConnell:

Miss Bell has asked me to give you a statement regarding the activities of the Associated Boards for the last year or so. I am enclosing same herewith.

Very cordially yours,

*C. A. Evans*

CAE:RC  
Enc.

1  
7  
6  
3  
2  
0  
0

1261

October 8, 1934

REPORT OF ACTIVITIES OF THE ASSOCIATED BOARDS  
FOR THE PAST YEAR

The work of more firmly establishing and solidifying the activities of the Associated Boards for Christian Colleges in China as reorganized in the fall of 1932 has gone on uninterrupted during the past two years.

The annual meeting of the Board held on April 23, 1934, heard the report of the Executive Committee, showing that the committees had been exceedingly active and that a large amount of work had been accomplished. That meeting again considered the general policy of the Associated Boards and its immediate objectives as regards to higher education in China, together with several special items of lesser import. Financial objectives for the ensuing year were also considered and approved. The committee also heard the report of the Committee on Christian Character and Relation to the Christian Movement, as well as the plans for definite promotional work in the United States as reported by the Committee on Promotion. Consideration was also given to the report of the Committee on Staff and Curriculum, and to the Joint Meeting with the United Committee for Christian Universities of China, that meeting having been held on June 27th.

For some time thought had been given to the incorporation of the Associated Boards, and the Trustees voted six members as incorporators. On June 7, 1934 the Associated Boards for Christian Colleges in China was duly incorporated under the membership corporation laws of the State of New York.

Agreeable to action of the Office Committee, the lay-out of the offices was changed early in July, providing more space for the Promotional Department and more closely consolidating the various units now connected with the Associated Boards.

Mrs. T. D. Macmillan of Beard School, Orange, N.J. has been secured as Associate Secretary, her chief duties being the women's work, and she has been actively engaged in her tasks since the middle of August. Every effort is being made to secure a man who will head up the promotional efforts of the Associated Boards, and at the present time several names are under consideration.

The China Famine Fund Committee very graciously gave access to its list of contributors, thereby increasing the potential list of givers by about 50,000. A try-out list of 5,000 from these names is now in process for the purpose of ascertaining the proper approach, and it is hoped that good results will be received.

There is an exceedingly healthy atmosphere in the progressive work that is now being done, and there seems to be assurance that very definite and constructive results will be achieved in the near future.

C. A. EVANS

1262



ASSOCIATED  
BOARDS

From Minutes of the Foreign Department - Woman's Foreign Missionary Society - October, 1934.

///  
The following recommendations were presented and after discussion it was VOTED AND APPROVED BY THE BOARD OF TRUSTEES OF HWA NAN COLLEGE:

1. That closer cooperation between Hwa Nan and Fukien Christian University be established.
  2. We all agree that the identity of Hwa Nan, her fine and distinct contribution to Christian Higher Education, be preserved and strengthened.
  3. That a joint committee be appointed composed of President Wang and President Liu, Mr. Garside, ex-officio, together with three members each, selected from the two Boards of Trustees. The purpose of this Committee is to explore the possibility of some present method of cooperation and have ready to present definite plans for this at May Meeting.
  4. That Mrs. Nicholson, Mrs. Diefendorf and the official correspondent be our representatives on the Joint Committee.
  5. That we urge the Associated Boards to give consideration to the matter of granting admission into the A.B.C.C. at the earliest possible moment. That Mrs. McConnell consult with them on this matter immediately.
- //

1  
7  
6  
3  
2  
0  
0



ASSOCIATED  
BOARDS

October 23, 1934

Mrs. F. J. McConnell  
150 Fifth Avenue  
New York City

My dear Mrs. McConnell:

I quote for your information a paragraph from a letter just received from Dr. Ernest E. Cole, Deputy Commissioner of the University of the State of New York, the State Education Department, Albany, New York:-

"The engrossed charters for the Woman's College of South China (Hwa Nan) and The University of Nanking were, I am informed, forwarded to you a day or two ago. In this connection I would call your attention to the fact that we have not yet received the \$10.00 fee for The Woman's College of South China. You will recall that you wrote us on September 26, that you were bringing the matter to the attention of Mrs. F. J. McConnell, but to date we have not heard from her. In case the matter may have been overlooked, we would appreciate your calling it again to her attention."

Very cordially yours,

B A GARSIDE

BAG:MP

1264

1  
7  
6  
3  
2  
0  
0

Hwa Nan



July 11th, 1955

My dear Mrs. McConnell,

We had so little time this afternoon to talk over the important Fukien-Hwa Nan problems now confronting us that I didn't get to finish expressing my own feeling of concern at the impression our Hwa Nan friends are getting that we here in America ~~are~~ trying to hurry and to drive them into some situation inimical to Hwa Nan.

On several other occasions I have found that it is both extremely unhealthy and destructive to permit a situation to develop in which a college group in China feels it is being driven along by some autocratic and unsympathetic group in America. The normal order is for the field to take the initiative, and for us to work with them.

If Miss Wang and her colleagues at Hwa Nan take the position, as they seem to have been doing in their presentation to Bishop Gowdy, and in several of the statements of workers from Foochow whom you have met or heard from, that the Associated Boards is trying to dictate some program conceived by the Associated Boards and hostile to the best interests of the College, then the situation is pretty hopeless. Some such psychology as this has lain back of a most unhappy situation at Cheeloo which has gone on for some years and has brought about almost the complete wreckage of the Colleges of Arts and Science.

We must in some way convince our friends at Hwa Nan (and of course equally at Fukien) that we are anxious to follow their lead in any plan of cooperation which will enable these institutions to render their largest service to China and which is at the same time financially possible and fair to the other institutions which are looking to us for a share of our all-too-limited funds.

This certainly does not mean any thought of decrease in our activity or our interest here. We must work not only with greater diligence but also with greater skill and diplomacy. I can assure you that you'll always find me eager to cooperate to the limit in every move we can make. You yourself have for more than a decade been laboring on this task so skillfully and so loyally that results at last are beginning to appear. We mustn't let these first tender buds of cooperation get frost-bitten by a blind rebellion against fancied "foreign domination".

I wanted to ask your judgment as to whether it might be wise for me to write to Bishop Gowdy. I'll discuss that with you when I telephone you tomorrow.

1265

1  
7  
6  
3  
2  
0  
0

Sallie Lou Mackinnon  
1944

Please keep separate  
in file when copying.

1  
7  
6  
3  
2  
0  
0

1266

BOARD OF MISSIONS AND CHURCH EXTENSION  
OF THE METHODIST CHURCH

150 FIFTH AVENUE

NEW YORK, N. Y.

WOMAN'S DIVISION OF  
CHRISTIAN SERVICE

July 8, 1943

RECEIVED ATTENTION  
JUL 12 1943  
E. M. McBRIER

Dr. E. M. McBrier  
150 Fifth Avenue  
New York, N. Y.

Dear Dr. McBrier,

At this late date I wish to express my appreciation of the pleasant luncheon we had together and more particularly of your deep interest in Hwa Nan College.

Thank you also for the copy of the letter to Me. Earhart. I have talked with Mrs. Peel. She will write to Mr. Earhart and we will then try to plan for a conference. I am confident of the need at Hwa Nan after the war and am confident that its contribution should be continued. I am sure the whole situation in regard to higher education in China should be studied jointly and definite plans made on the basis of such a study.

With every good wish, I am

Sincerely yours,

Sallie Lou Mackinnon

SLM:BL

1267

1  
7  
6  
3  
2  
0  
0



WOMAN'S DIVISION OF CHRISTIAN SERVICE OF THE  
BOARD OF MISSIONS AND CHURCH EXTENSION  
OF THE METHODIST CHURCH

150 FIFTH AVENUE

NEW YORK 11, N. Y.

SALLIE LOU MAC KINNON  
EXECUTIVE SECRETARY  
SOUTH AND CENTRAL AFRICA, CHINA

March 21, 1944

*ack  
4/10/44*

Mr. C. A. Evans  
Building

Dear Mr. Evans,

Miss Betty Ling has completed her studies in music and is ready to return to Hwa Nan College, to which institution her return has been requested by the field. I am writing to inquire if it will be possible for the Associated Boards of Christian Colleges in China to pay Miss Ling's return passage or to take a considerable part of it. We have in our Woman's Division appropriations no provision for travel for nationals, but we feel that the return of a few Chinese women here in America is of the utmost importance to the work in China, and in Miss Ling's case, to the work of the college.

Sincerely yours,

*Sallie Lou MacKinnon*

SLM:BL

Signed in Miss MacKinnon's absence.

1  
7  
6  
3  
2  
0  
0

1268

WOMAN'S DIVISION OF CHRISTIAN SERVICE OF THE  
BOARD OF MISSIONS AND CHURCH EXTENSION  
OF THE METHODIST CHURCH

NEW YORK, N. Y.

100 FIFTH AVENUE

MAIL ROOM  
RECEIVED  
APR 11 1944

APR 11 1944

RECEIVED  
UNIVERSITIES  
APR 11 1944  
JOINT OFFICE

1  
7  
6  
3  
2  
0  
0

1269

April 10, 1944

Miss Sallie Lou MacKimmon  
150 Fifth Avenue  
New York, N. Y.

Dear Miss MacKimmon:

The request for travel for Miss Betty Ling as set forth in your letter of March 21st was presented to the Finance Committee of the Associated Boards for Christian Colleges in China. It was suggested that \$400.00 be allocated from the Contingent Fund of the Associated Boards, but it was felt that in justice to other Colleges that this fund should not be used for this purpose.

The Committee also recognized that there are other students in America striving to return to China and that once such an appropriation is made it would open the door for at least six other students to make like claims.

In addition to that the cost for the Colleges in China is rapidly rising and if any funds whatsoever are available they should be made applicable to the needs of the staff members in China.

Very sincerely yours,

C. A. EVANS

CAE/B

1270

1  
7  
6  
3  
2  
0  
0

RECEIVED  
UNIVERSITIES  
APR 11 1944

JOINT OFFICE

1  
7  
6  
3  
2  
0  
0

1271